

Upgrade AIP Core

- [Step 1 - Run the installer](#)
- [Step 2 - Check the cast.ms.home property on each AIP Node](#)
- [Step 3 - Restart AIP Node](#)
- [Step 4 - Check new AIP Core release is registered in AIP Console](#)
- [Step 5 - Check schema version \(optional\)](#)
 - [Using AIP Console](#)
 - [Using CAST Server Manager](#)

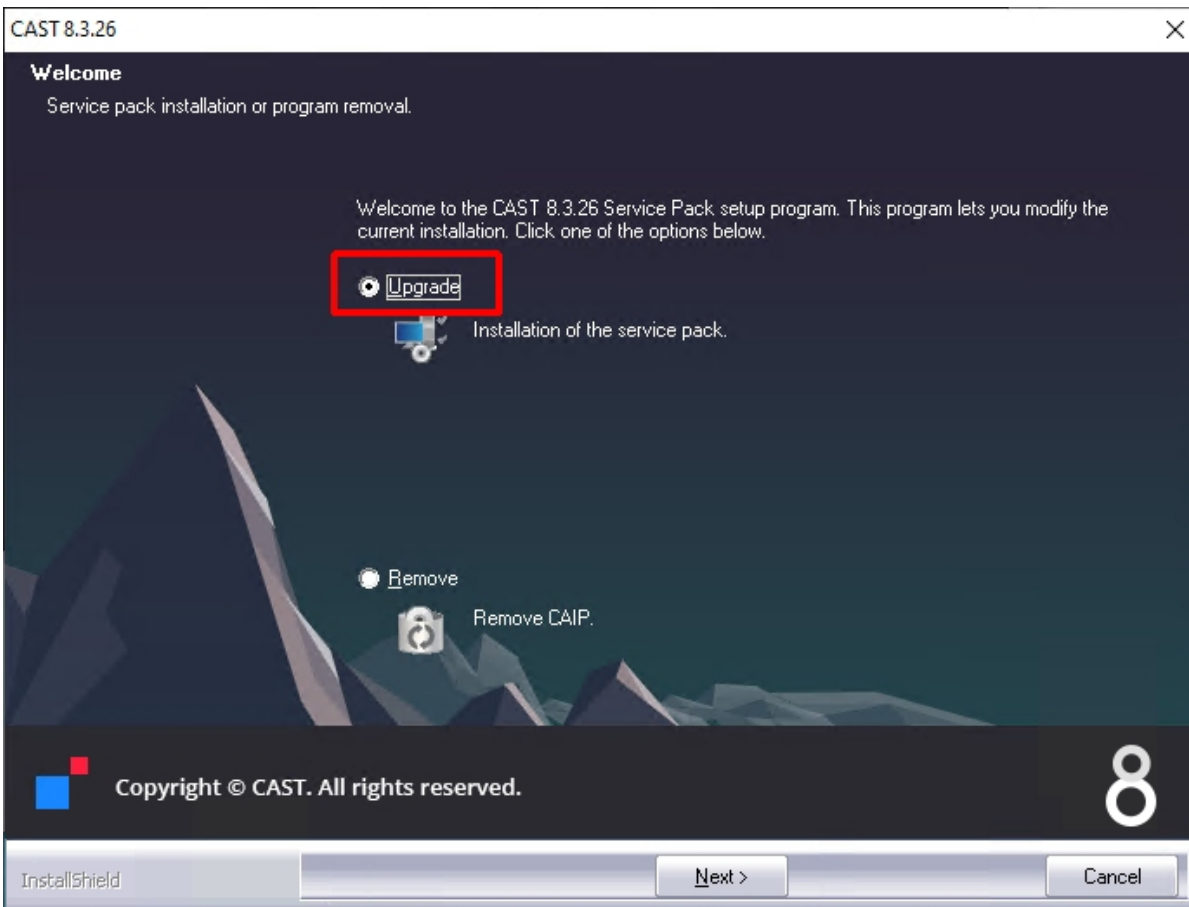
i Summary: This section describes the upgrade process for **AIP Core**. This process must be repeated on **each AIP Node** you want to upgrade to a new release of AIP Core. When AIP Core has been upgraded, you must then perform an [Application and schema upgrade](#) to upgrade your Applications and their associated schemas to match the new AIP Core release.

Step 1 - Run the installer

Right click the **setup.bat** file located in the folder created during the **unzip process** and choose **Run as Administrator** in the contextual menu:



When the installer loads, ensure that the **Upgrade** option is selected as shown below, then click **Next**:



Accept the **License Agreement** and then click **Next**:

License Agreement

Please read the following license agreement carefully.

GENERAL TERMS AND CONDITIONS

CAUTION: PLEASE READ THIS LICENSE CONTRACT CAREFULLY. THIS IS A LEGAL AGREEMENT BETWEEN YOU AND CAST SA. ANY USE OF THIS SOFTWARE INDICATES YOUR AGREEMENT WITH THE TERMS OF THIS CONTRACT. IF YOU DO NOT AGREE TO THESE TERMS, RETURN THE COMPONENTS OF THE SOFTWARE PRODUCT (DISKETTES, CD-ROM, DOCUMENTATION...) TO CAST OR TO THE CAST DISTRIBUTOR FROM WHOM YOU OBTAINED THE SOFTWARE LICENSE.

TO ENSURE YOUR SATISFACTION WITH YOUR SOFTWARE, CAST IS AT YOUR DISPOSAL TO ANSWER ANY QUESTIONS YOU MAY HAVE ABOUT YOUR RIGHTS TO USE THIS PRODUCT. PLEASE ADDRESS ANY QUESTIONS CONCERNING THIS LICENSE TO YOUR LOCAL CAST OFFICE, OR TO YOUR DISTRIBUTOR. CONTACT INFORMATION LISTED AT <WWW.CASTSOFTWARE>.COM.

1. RECITALS

- I accept the terms of the license agreement
- I do not accept the terms of the license agreement

Print



Copyright © CAST. All rights reserved.



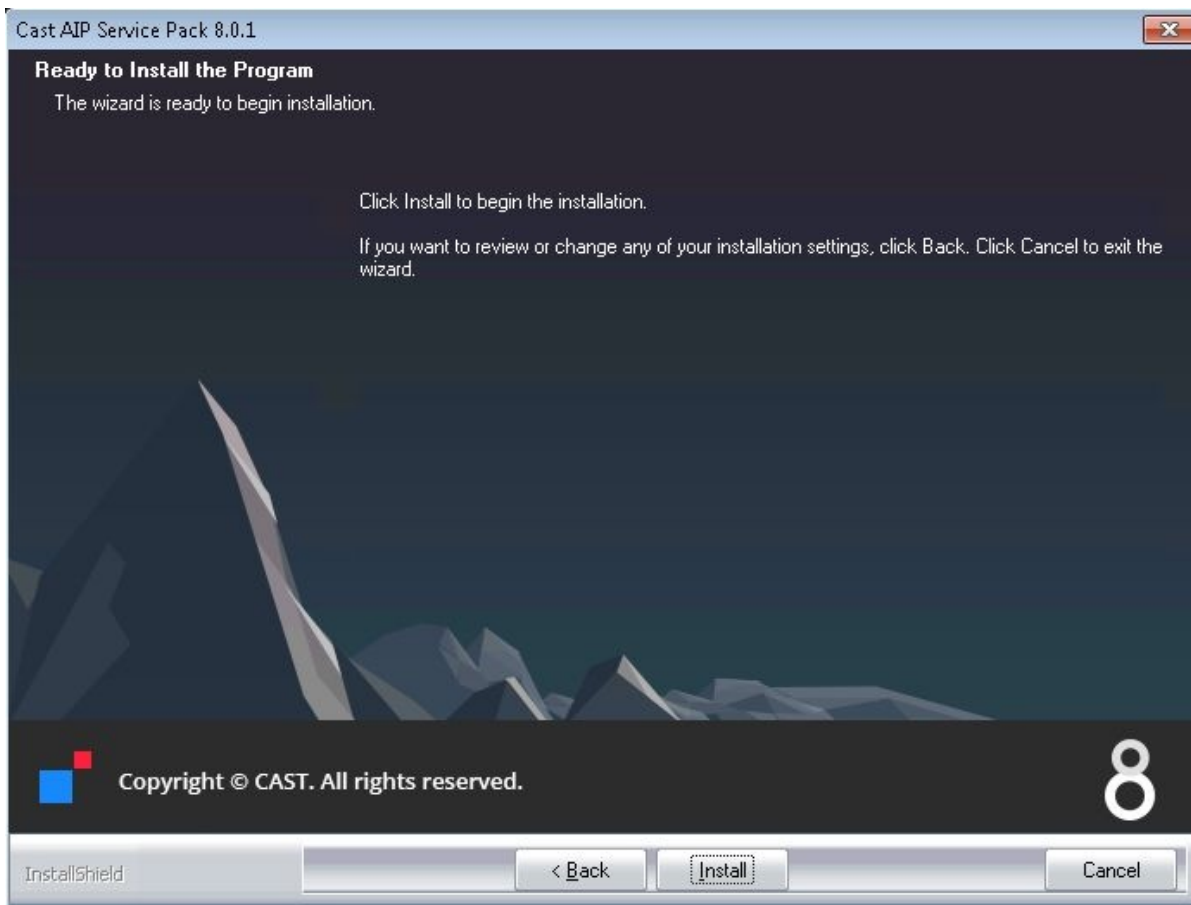
InstallShield

< Back

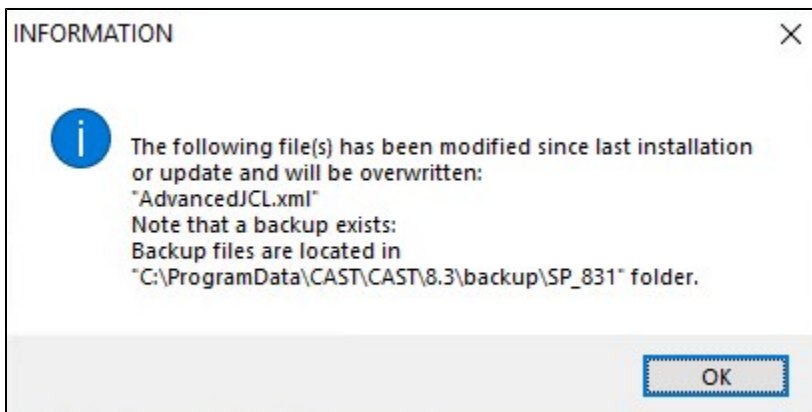
Next >

Cancel

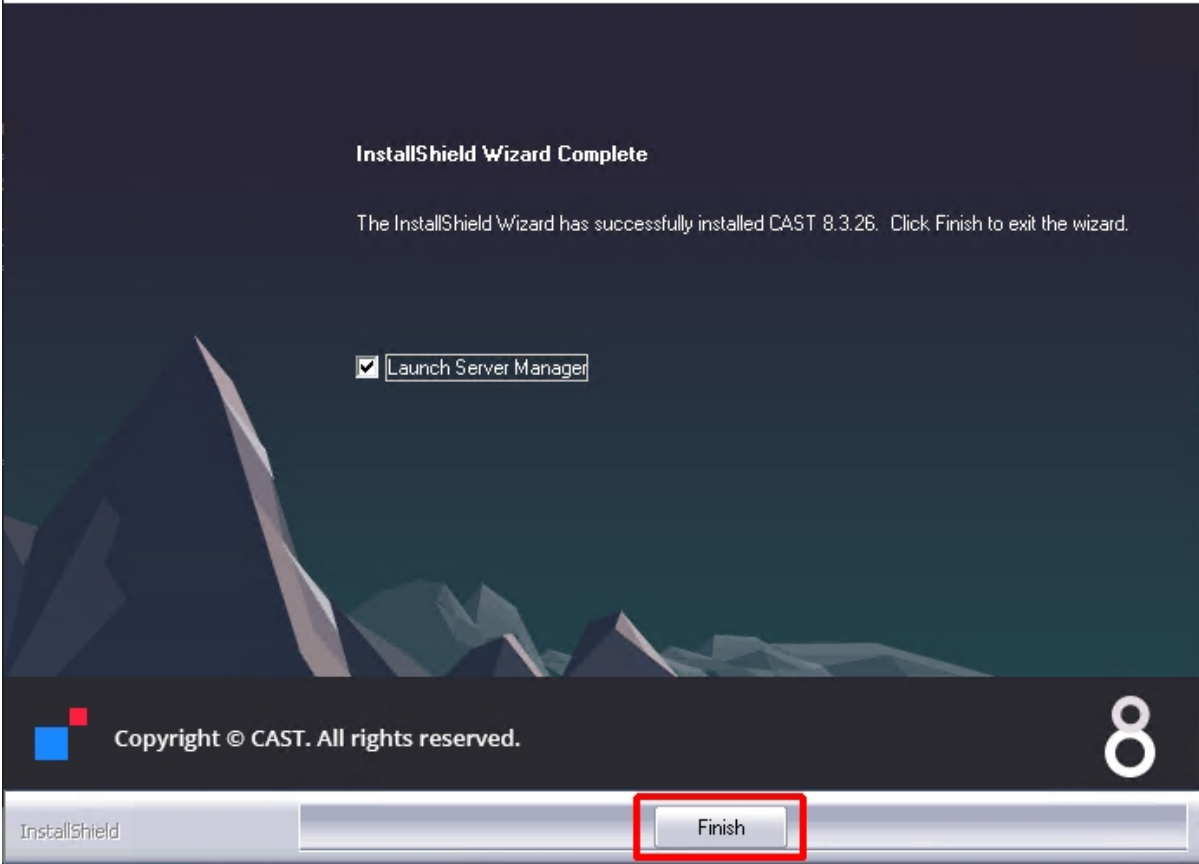
Click **Install** to start the process:



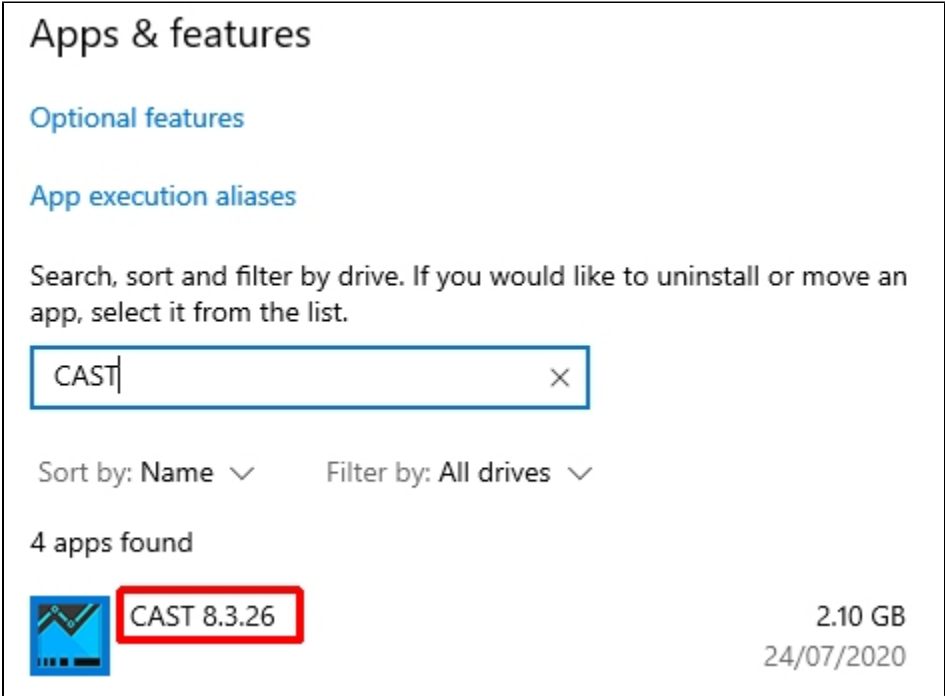
If the Service Pack installer detects any changes to files in the CAST AIP installation folder a popup message will be displayed informing you of this (this will not block the installation). Note that this popup will never be shown if you are installing CAST AIP in "standalone" mode without any previous installation of CAST AIP present on the workstation). Click **OK** to continue the installation process.



On completion, you will be given the choice to launch **CAST Server Manager**. Click **Finish** to complete the process:



The **Add or remove programs** option in Microsoft Windows will show the updated release number for AIP Core:



i When running the AIP Core setup in an upgrade scenario, the setup will **NOT** install the .NET Framework even if it is not present on the target server at all. In this scenario, it is the responsibility of the end-user to install the required .NET Framework.

Step 2 - Check the cast.ms.home property on each AIP Node

On **each AIP Node** where you have updated AIP Core, open the following file with a text editor:

```
%PROGRAMDATA%\CAST\AipConsole\AipNode\aip-node-app.properties  
  
Older releases: <installation_folder>\AipNode\data\aip-node-app.properties
```

Locate the `cast.ms.home` property and ensure that the path points to your up-to-date installation of AIP Core. If you routinely install AIP Core in the default location, then there should be nothing to change:

```
# =====  
# CAST AIP Installation folder  
# -----  
cast.ms.home=C:/Program Files/CAST/8.3
```

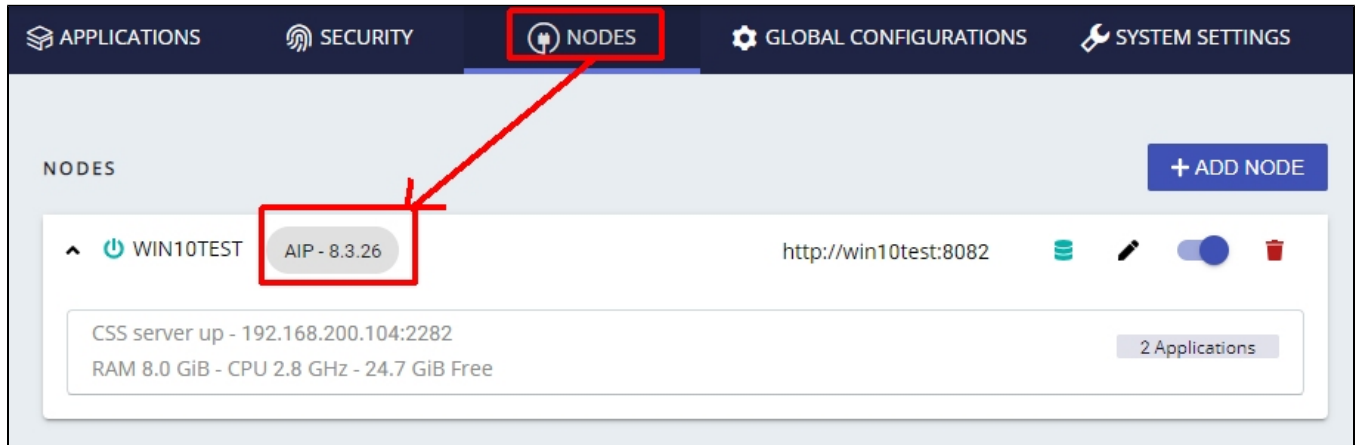
Save the file if you made any changes.

Step 3 - Restart AIP Node

Restart the **AIP Node** - re-run the start shortcut or restart the the Windows service.

Step 4 - Check new AIP Core release is registered in AIP Console

Browse to your AIP Console URL `http://<server>:8081/ui/index.html`, login to AIP Console with a user that has the **ADMIN role** and check that your **AIP Node(s)** are showing the correct release of AIP Core, in **Administration Center - Nodes**:



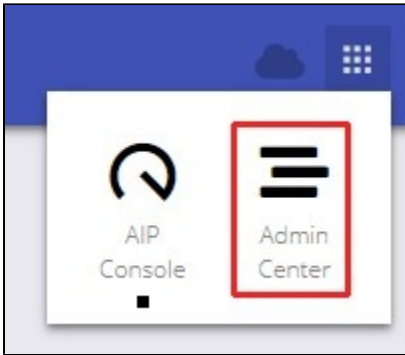
The screenshot shows the AIP Console interface. The top navigation bar includes 'APPLICATIONS', 'SECURITY', 'NODES', 'GLOBAL CONFIGURATIONS', and 'SYSTEM SETTINGS'. The 'NODES' tab is active. Below the navigation bar, there is a 'NODES' section with a '+ ADD NODE' button. A table lists nodes, with the first node being 'WIN10TEST' with a status icon and a release version 'AIP - 8.3.26' highlighted by a red box. A red arrow points from the 'NODES' tab to this box. Below the node name, there is a summary box showing 'CSS server up - 192.168.200.104:2282', 'RAM 8.0 GiB - CPU 2.8 GHz - 24.7 GiB Free', and '2 Applications'.

Step 5 - Check schema version (optional)

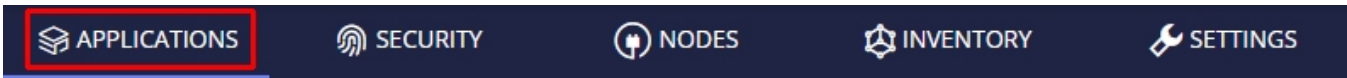
If you want to check which schemas (and therefore which Applications) will require a **schema upgrade**, you can do so using **AIP Console** or using **CAST Server Manager** installed on the **AIP Node**:

Using AIP Console

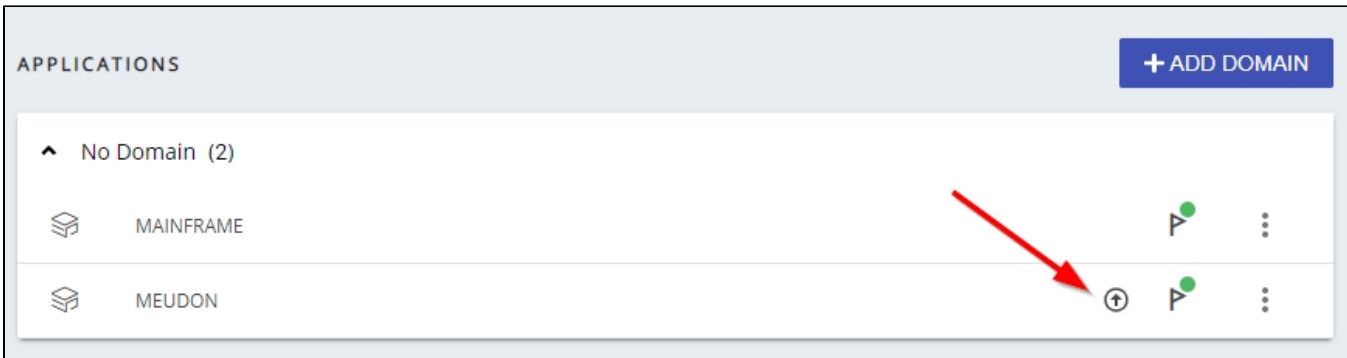
Browse to your **AIP Console URL** `http://<server>:8081/ui/index.html`, login to AIP Console with a user that has the **ADMIN role** and switch to the **Admin Center**:



Now move to the [Applications panel](#):



Any application that is **eligible for upgrade** (i.e. the AIP Node on which the Application is located is installed with a release of AIP Core that is newer than the release of AIP Core used for the most recent snapshot) will be flagged with the following icon:



Using CAST Server Manager

Connect to the relevant CAST Storage Service/PostgreSQL instance and you should see all schemas that need an update in the **Combined installation (out-of-date)** section:

	Schema Name	Installed Product	Upgrade Status
<ul style="list-style-type: none"> Combined Installations (Up-to-date) Combined Installations (Out-of-date) meudon test2 v8325 Measurement Services Unmanaged Services 	meudon	Combined install (Version: 8.3.25.1), com.castsoftware.JEE-MavenHt...	Upgrades Available
	test2	Combined install (Version: 8.3.25.1), com.castsoftware.JEE-MavenHt...	Upgrades Available
	v8325	Combined install (Version: 8.3.25.1), com.castsoftware.JEE-MavenHt...	Upgrades Available