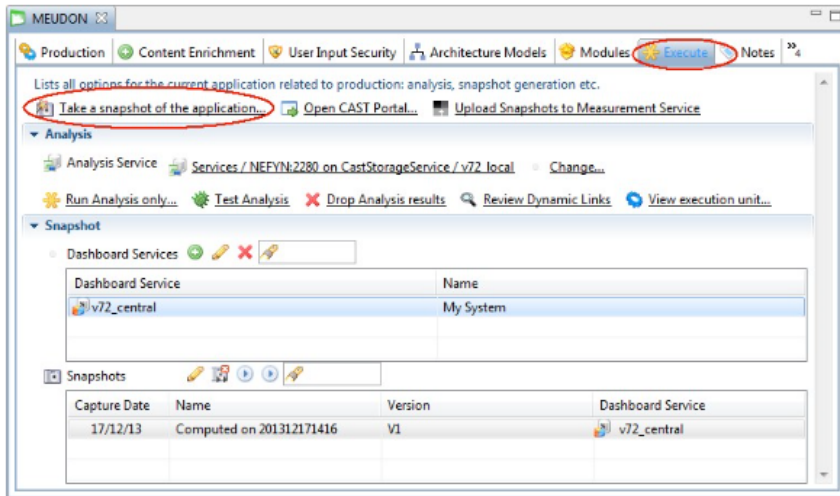


CMS Snapshot Analysis - Take a Snapshot of the Application - Error Free Logs - CAST AIP 8

Purpose

This task will start the snapshot generation process. All analysis units, analysis options, production options and configuration settings will be taken into account by this task.

To generate a snapshot, you need to use the **Execute** tab in the Application editor: Please see the screenshot to know about how this step is configured in the CAST Management Studio.



The task **Take a snapshot of the application** can also be initiated from

- [Applications view](#) > Right click the **Application** and select **Execute** > **Take a snapshot of the application**
- [Services view](#) > Right click the **Dashboard Service** and select **Snapshots** > **Take a snapshot for each application**
- [Dashboard Service editor](#) > Use the **Take a snapshot for each application** option in the **Snapshots** tab

This task can also be run from the command line with selected extra parameters using the command `CAST-MS-CLI.exe GenerateSnapshot`.

For 8.0.x official documentation check [Generate the Snapshot](#)

For On line help refer CAST Management Studio Help > Execute tab

This task being an encapsulator task the loglines related to this task can only be seen in CAST MS log which is shown below.

- [Cast MS Log](#)

Take a snapshot of the application

Task

- ✓ Take a snapshot of the application
 - ✓ Snapshot generation
 - ✓ Synchronize Services
 - ✓ Application "J2EE Application"
 - ✓ Tools before analysis
 - ✓ My SQL Tool
 - ✓ Run CSV generation
 - ✓ My External Program
 - ✓ Run analysis for 'J2EE Application'
 - ✓ Run SQL Analyzers "My Package 2"
 - ✓ Compute Analysis Unit full content
 - ✓ Compute content for Refined Target
 - ✓ Run metrics calculation for My Package 2
 - ✓ Compute dependency dataset
 - ✓ Run J2EE Analyzer "My Source file based execution unit"
 - ✓ Clean dependency dataset
 - ✓ Compute Analysis Unit full content for BusinessHelloWorld
 - ✓ Run metrics calculation for My Source file based execution unit
 - ✓ Run reference pattern 'My Reference Pattern'
 - ✓ Create source set for My Reference Pattern
 - ✓ Create target set for My Reference Pattern
 - ✓ Run Reference Finder Analyzers "RP My Reference Pattern"
 - ✓ Delete source set for My Reference Pattern
 - ✓ Delete target set for My Reference Pattern
 - ✓ Run Extensions at application level for J2EE Application
 - ✓ Tools after analysis
 - ✓ My SQL Tool
 - ✓ My External Program
 - ✓ My Update CAST Knowledge Base
 - ✓ Run Universal Importer "My Universal Importer"
 - ✓ Run CSV generation
 - ✓ Create source set for My Reference Pattern
 - ✓ Run Reference Pattern Search String "My Reference Pattern Search String"
 - ✓ Delete source set for My Reference Pattern
 - ✓ Run Escalated Links Calculation on "J2EE Application"
 - ✓ Run Copy Paste metrics calculation for J2EE Application
 - ✓ Analyze Copy Paste code
 - ✓ Save results to database
 - ✓ Run Dynamic Link Manager
 - ✓ Update SQL XXL Table Size for "J2EE Application"
 - ✓ Run Data Flow Security Analysis on "J2EE Application"
 - ✓ Prepare snapshot in "cb802_sbo_local"
 - ✓ Generate Modules in "cb802_sbo_local"
 - ✓ Run CSV generation
 - ✓ Run Path builder on "cb802_sbo_local"
 - ✓ Update Sources in "cb802_sbo_local"
 - ✓ Finalize Data Flow Security in "cb802_sbo_local"
 - ✓ Create Architecture Model in "cb802_sbo_local"
 - ✓ Create Architecture Model in "cb802_sbo_central"
 - ✓ Synchronize Assessment Model in cb802_sbo_central
 - ✓ Create Snapshot Definition in "cb802_sbo_central"
 - ✓ Compute Snapshot in "cb802_sbo_central" with associated Analysis Services
 - ✓ Configure snapshot data into dashboard service.
 - ✓ Transfer sources, positions and bookmarks into dashboard service.
 - ✓ Synchronize Snapshot List from "cb802_sbo_central"
 - ✓ Dashboard automation in "cb802_sbo_central"
 - ✓ Execution Summary

Cast MS Log

Before this task is run, the following tasks need to be successfully run, Environment configuration, Creation of a new Application with its sub tasks, Modification of Application name, Modification of Version Name, Acceptance of Delivery and its use as current version and Deploying of source code repositories

INF: 2016-07-19 08:30:00: starting Task Take a snapshot of the application

INF: 2016-07-19 08:30:00: starting Task Snapshot generation

INF: 2016-07-19 08:30:00: document saved

INF: 2016-07-19 08:50:05: Task message: No Task message

INF: 2016-07-19 08:50:05: No associated log file

INF: 2016-07-19 08:50:05: ending Task Take a snapshot of the application

For the successful completion of this task **Take a snapshot of the application** several other in between tasks also should have a successful run.

They are the following Snapshot generation, Synchronize Services, Tools before analysis if configured, Run analysis for the technology involved and its sub tasks, Run Copy Paste metrics calculation, Analyze Copy Paste code, Run Dynamic Link Manager, Run Data Flow Security Analysis, Prepare snapshot, Generate Modules.