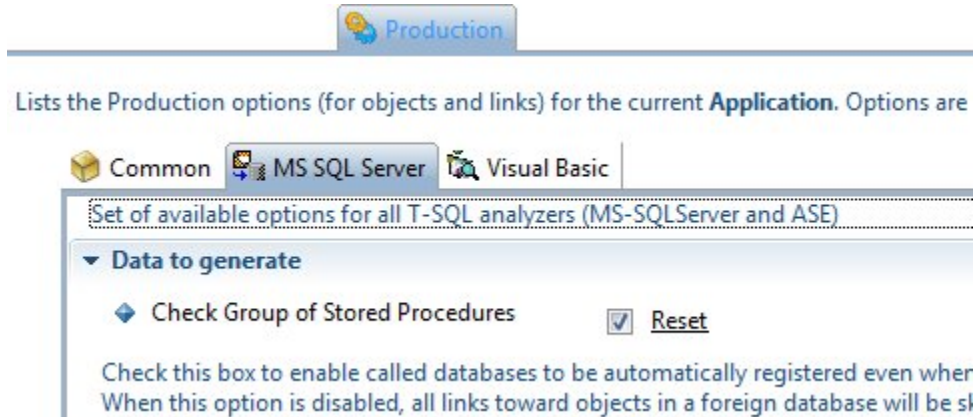


CMS - Production tab

Production tab

This tab allows you to define various specific **production options** (organized by **Technology**) for all **Analysis Units** defined in the Application - these options govern the way in which the source code matching the Technology type will be **handled during the analysis** - in particular for the resulting objects and links.

The CAST Management Studio will **automatically** determine the Technology type of an Analysis Unit when the packages are deployed and the Analysis Units are created. As such, all Technologies that are present in the Analysis Units in your Application will be visible in this tab, for example:

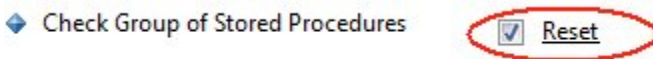


Selecting a Technology type will display a **section** containing the production options for the selected Technology type. These options are either:

- **set to their defaults** (initialized from the options set at [Technology](#)) level where they cannot be determined from the source code
- or **predetermined** from the source code

Notes

- The options in each Technology set are valid for ALL **corresponding Analysis Units** defined in the current Application (so making changes to a specific option will mean all Analysis Units in that specific Technology will "inherit" the same setting). If you need to define specific options for a specific Analysis Unit in a specific Technology, then please use the [Analysis Unit editor](#).
- Note about the **Reset** option: some production options have a "Reset" option next to them - using this will reset the option to the value set at Technology level in the [Technology editors](#):

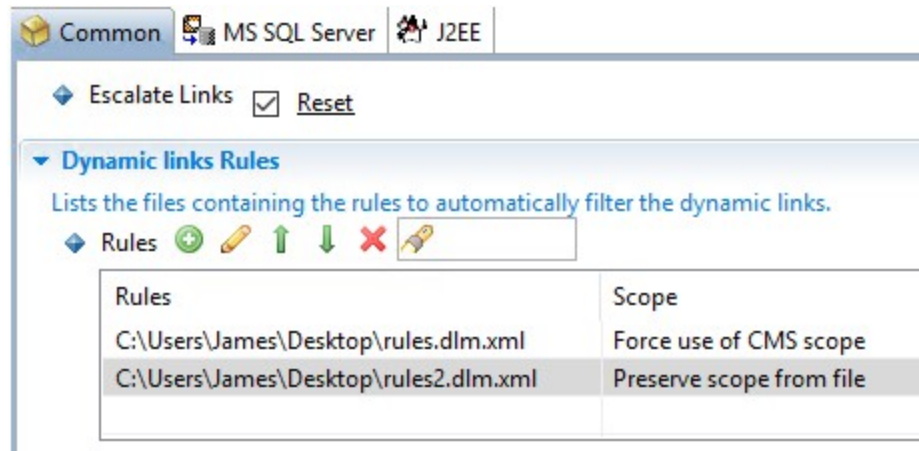


Available options




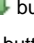

The options available at this level are also available at Technology level - see [Technology editors](#) for more information and a description of the options. One exception to this is the ability to associate **Dynamic Link Manager rule files** to the Application or to its constituent **Technologies**:

Dynamic Links Rules

The Dynamic Links Rules section is available in the **Common tab** or in individual **Technology tabs**:

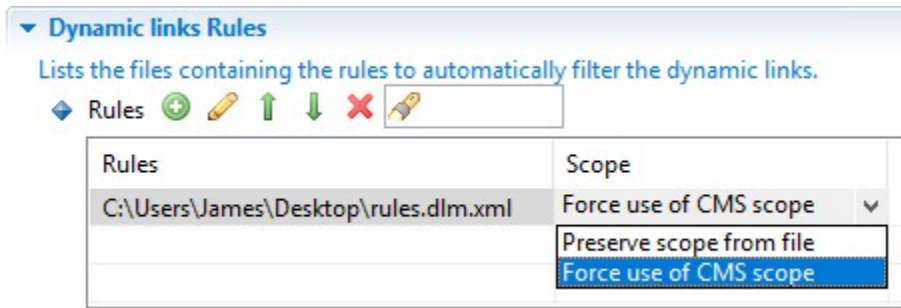


The section allows you to assign a Dynamic Link Manager rule file (*.DLM.XML file) that will be applied during the analysis:

- Use the  button to add a new DLM.XML file - you will be prompted for the location of the file.
- Use the  button to change a DLM.XML file you have already assigned.
- Use the   buttons to change the order of the DLM.XML files - the order in which they are displayed is the order in which they are processed.
- Use the  button to remove a DLM.XML file from the section - the rules in the file will no longer be processed.

Scope

- By default, the **Scope** option will be set to "Force use of CMS scope" - this will mean that any scope defined in the DLM.xml file (using the **<scope>...</scope>** element) will be ignored and a scope matching the tab in which the rule file is defined will always be used during an analysis.
- You can manually change the **Scope** option to "Preserve scope from file" by clicking the option (see image below). This will force the CAST Management Studio to take into account the scope defined in the DLM.xml file (using the **<scope>...</scope>** element):



You can find out more information about Dynamic Link Manager rule files here: [Dynamic Link Manager filter rules](#).

