

ACH - Change application



Starting from CAST AIP 8.3.23, **CAST Architecture Checker** will no longer be installed as part of the CAST AIP setup, whether installing CAST AIP from scratch or on a server where a previous release of CAST AIP exists. CAST Architecture Checker has evolved into a **standalone component** where all feature requests and bug fixes are now managed. This standalone component can be downloaded from **CAST Extend** (<https://extending.castsoftware.com/#/search-results?q=archchecker>).


Up-to-date documentation can be found here: [CAST Architecture Checker](#).

Change application

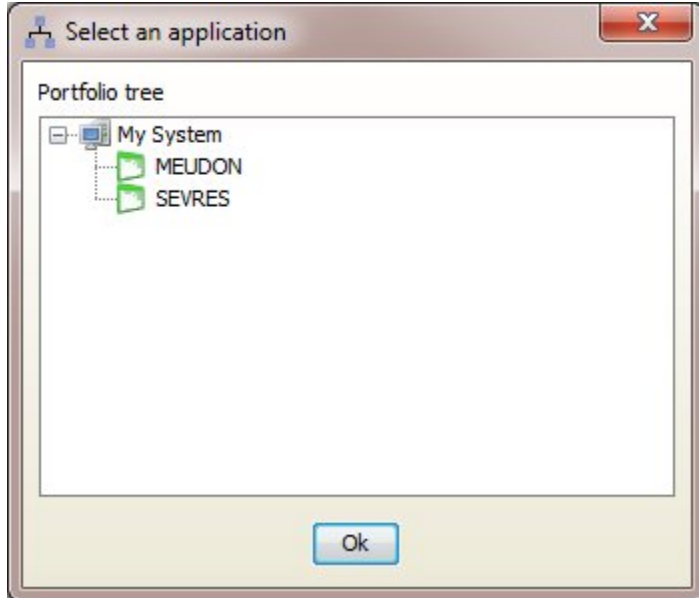
As part of the [connection process](#) for [working online](#) you are prompted to select an application (as defined in the CAST Management Studio) - this is the application that you will check your architecture model against.

If you need to change the application, you can use this option.

The option can be accessed:

- From the [Action](#) > **Change application** menu
- Using the  [Toolbar](#) icon

When selected, you will be prompted to select the new application (as defined in the CAST Management Studio) you want to check using the Architecture Checker:



- Select the Application and click the **OK** to change to this new Application.
- Any future use of the online options (see [Working online](#)) will use this new application.

Notes - Any applications that are created in the CAST Management Studio while you are connected with the CAST Architecture Checker will not be immediately visible using this option. You may need to reconnect to the CAST Management Service using the [Connect and select application](#) option.

- If you are not [working online](#), you will be prompted to [connect](#).

