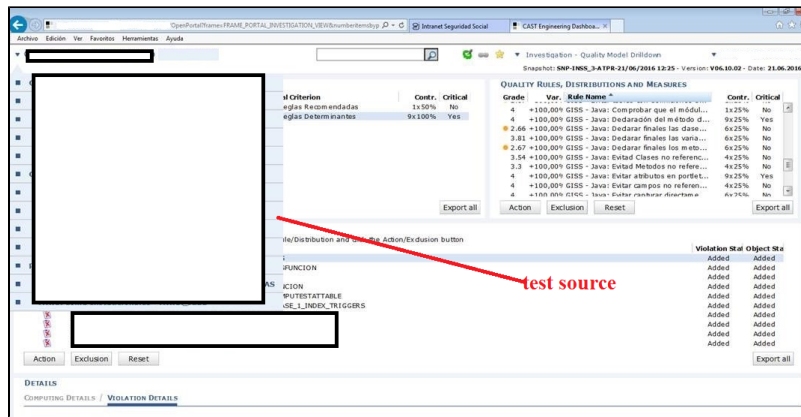
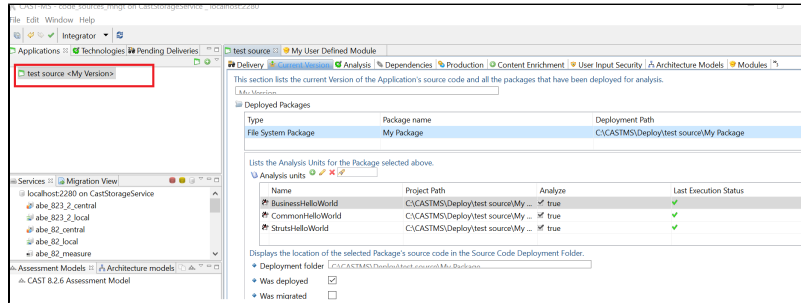


CAST Engineering Dashboard - Application - Missing Application

Purpose

This page helps to troubleshoot issues when the Application is missing from CED.

An application is missing from CED if it exists under Cast-MS and it's not visible under CED.



Observed in CAST AIP

| Release | Yes/No |
|---------|--------|
| 8.3.x | ✓ |

Observed on RDBMS

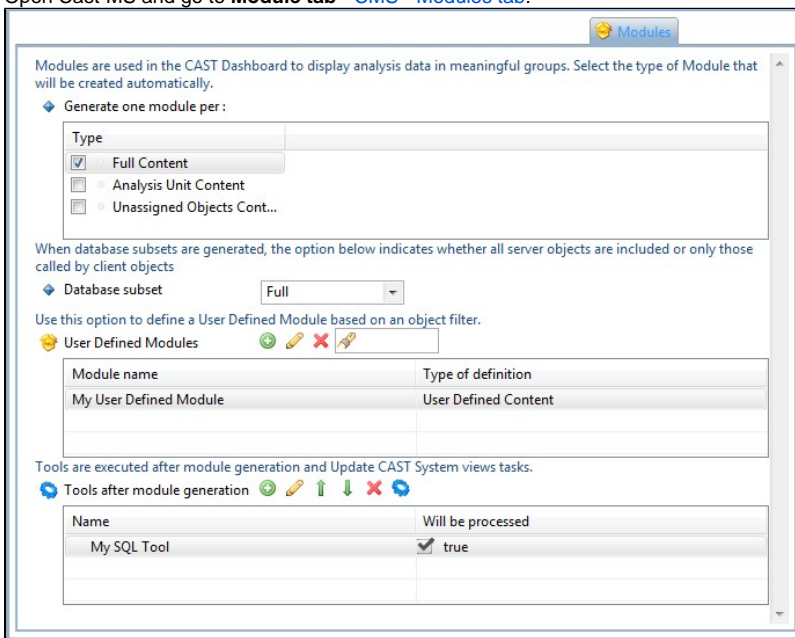
| RDBMS | Yes/No |
|-------|--------|
| CSS | ✓ |

Step by Step scenario

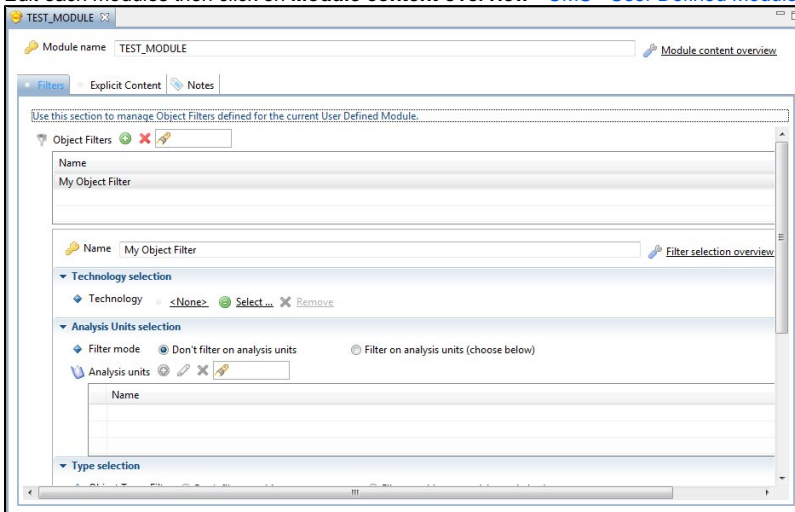
1. Connect to CED
2. Go to the [Quick Access](#)
3. Observe that there is application present under Cast-MS but missing from CED

Action Plan

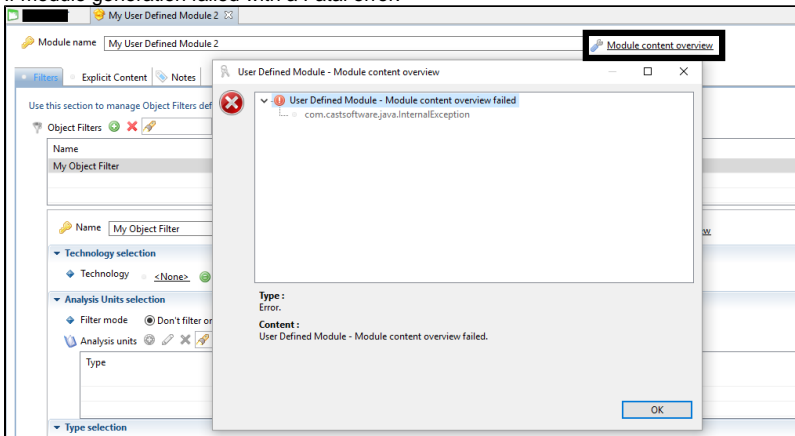
1. Open Cast-MS and go to **Module tab - CMS - Modules tab**:



2. Edit each modules then click on **Module content overview - CMS - User Defined Module editor** to generate the content of modules



3. If module generation failed with a Fatal error:



then refer to the following link to investigate the root cause of the issue - [CMS Application - Modules - Module content overview - User Defined Modules - Fatal Error](#)

4. If the above steps do not solve your issue contact [CAST Technical Support](#) with the following [Relevant input](#). Support will reproduce the issue by generating a snapshot - [CMS Snapshot Analysis - Compute Snapshot - Information - How to compute snapshot by skipping analysis](#) then observing the issue.

Notes/comments

Related Pages