


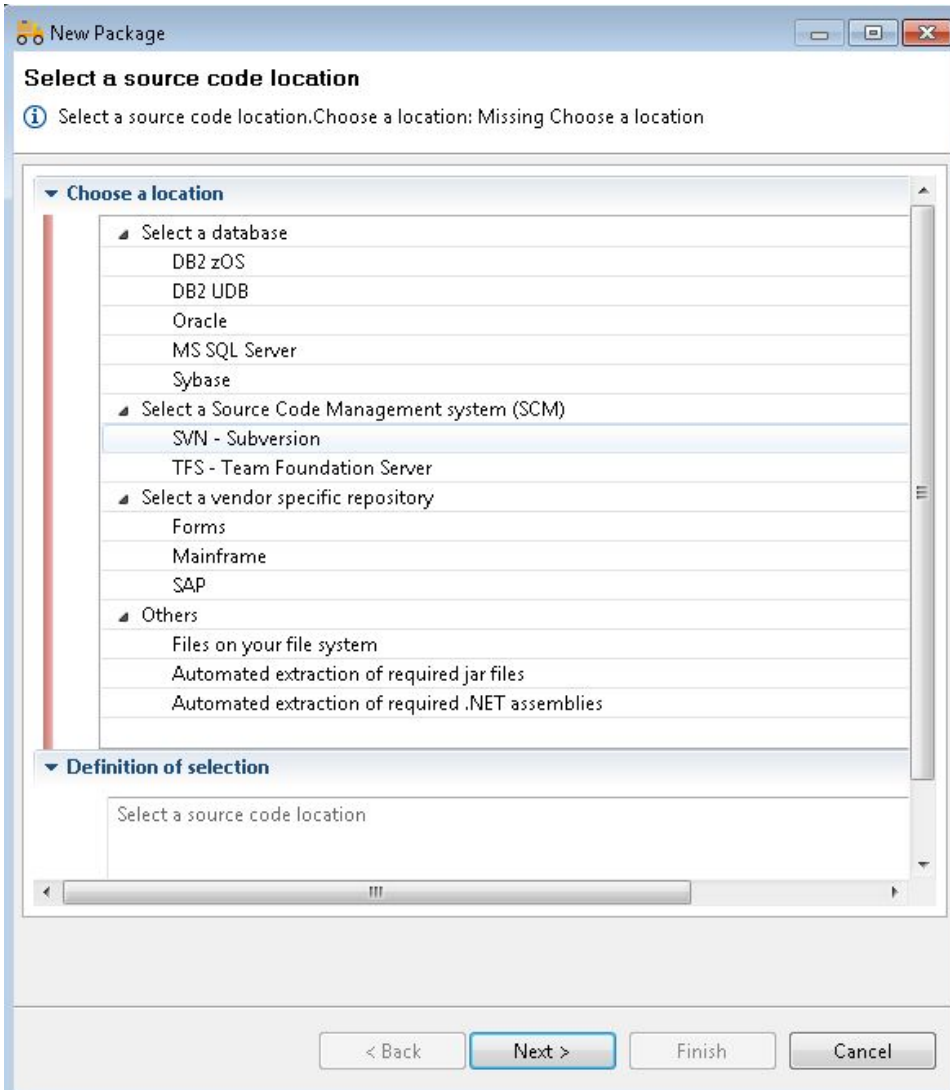
DMT - Add a new source code package

Add a new source code package

Note that the **Adding a new source code package** is relevant regardless of which [mode](#) you are working in.

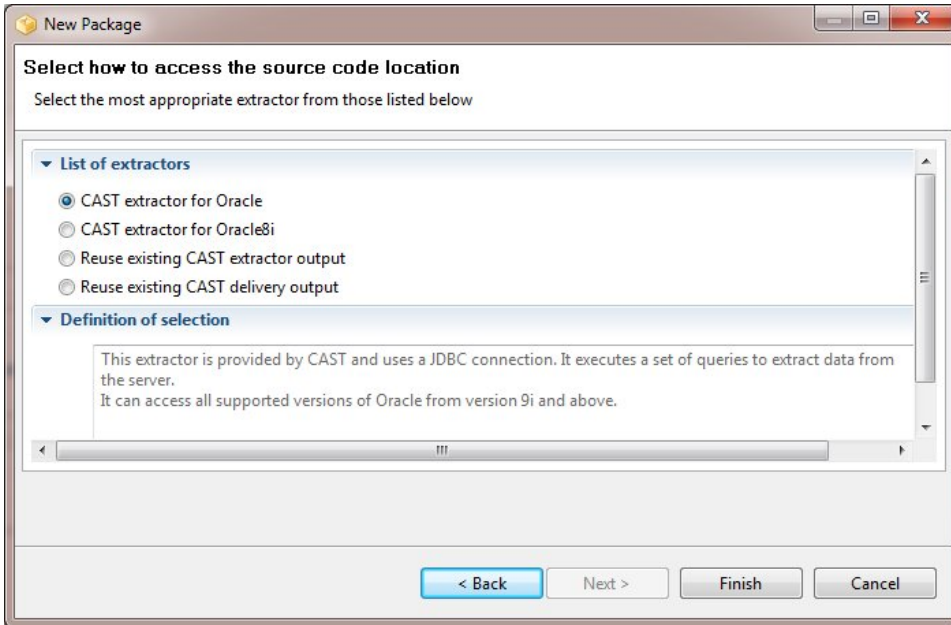
To add a new source code package:

- In the [Version page](#), click the  button to add a new **Source Code Package** to your Version.
- The **Add Package wizard** will then be displayed - this guides you through the package creation process:



- First choose the type of source code you want to package and click the **Next** button.

- The next step in the **Add package wizard** will then be displayed. This varies according to the selection made in the first step. The example below is for **Oracle**:



- Select the appropriate option and click **Finish** to complete the package creation.
- The [Source Code Package page](#) will then be displayed with focus on the [Package Configuration tab](#).

Note that all the various options available in the **Add package wizard** are explained in more detail in the [Package Configuration tab - Where is your source code?](#)

Saving your changes

Please ensure that you [Save](#) your newly added source code package. This will save the changes to the local CAST Delivery Manager Tool workspace.

