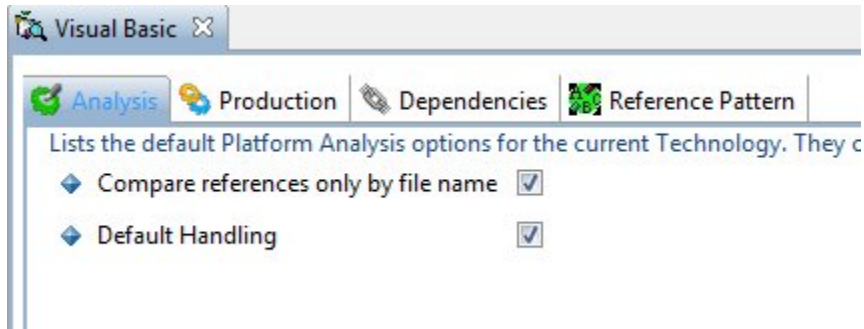


CMS - Visual Basic Technology options

Visual Basic Technology options



The **Visual Basic Technology editor** contains various tabs. Each is explained below.

Notes

- The options in this Technology editor are the default options that will be used to populate the same fields in **Applications** and **Analysis Units**. If you need to define specific options for a specific Application or Analysis Unit, then please use the [Application editor](#) (Analysis tab) or the [Analysis Unit editor](#).
- If you make a change to a specific option at Application or Analysis Unit level, and then subsequently change the same option via this editor, this setting will NOT be mirrored back to the Application or Analysis Unit - this is because specific settings at Application and Analysis Unit level have precedence if they have been changed from the default setting available in this editor.
- The [VB Reference Guide](#) contains miscellaneous technical information about the VB analysis process.
- See also the [Web Services \(VB\) Reference Guide](#).

Analysis tab

Compare references by filename	If you select this option, the analyzer will compare ActiveX references in the .VBP file using the filename only . If the option is left blank, references are compared using the full path instead.
Default Handling	During the analysis, when this option is selected, the analyzer will take into account predefined constants and any #Const directives contained in the project.

Custom Environment Profiles - only visible at **Application** and **Analysis Unit** level

This option enables you to select VB based Environment Profiles that you have created yourself (as oppose to the Environment Profiles that are pre-defined by CAST).


Environment Profiles are a set of predefined configuration settings that can be included in an analysis. An Environment Profile can be particularly useful where you have several applications that rely on the same specific settings. By creating an Environment Profile that defines these settings, you then simply include the Environment Profile in the analysis. When the analysis is run, the settings in the Environment Profile are taken into account.

For **VB technologies**, you can define:

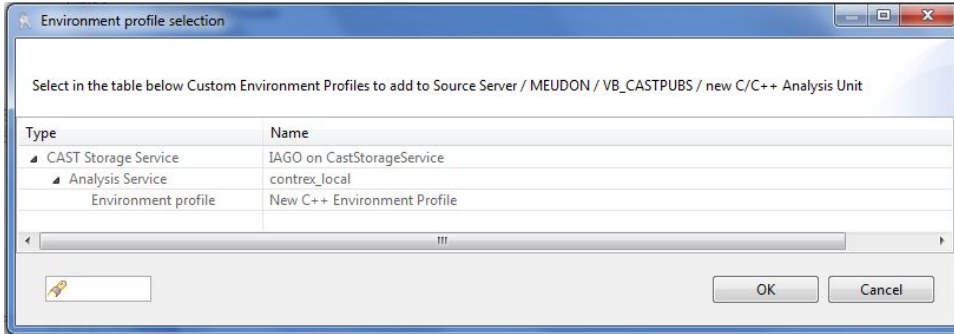
- Method Parametrization

Add a custom Environment Profile

To add a custom Environment Profile:

- click the  button
- You will be prompted to choose between adding an existing custom Environment Profile (**Add** option) or creating a new custom Environment Profile (**New** option):

Add A dialog box will be displayed listing all existing custom Environment Profiles that have been created:



Select the Environment Profile you require and click **OK**. The profile will then appear in the list.


Manage Environment Profiles The **Environment Profile Manager** will be displayed, enabling you to create your custom Environment Profile:



See [Using the Environment Profile Manager](#) for more information about how to create **new custom Environment Profiles**.

Remove a custom Environment Profile

To remove a profile that you do not want to include in analysis:

1. Select the item that you want to remove from the list by left-clicking with the mouse.
2. Click the **Remove** button  to clear the selected item(s). The **Delete** key and the right-click short cut menu can also be used

You can remove multiple items by selecting the items in the list and then clicking the **Remove** button.

Production tab

Process Settings - Inference Engine

Use Inference Engine	Use this option to activate the Inference Engine during the analysis. Run time type information will be computed in order to simulate program behaviour during execution of the analyzer and thus identify additional links that would not otherwise be "discovered" using standard analysis techniques. This technology detects a reference to an object wherever its name is mentioned, regardless of the context in which this reference occurs.
Maximum Size for Query	When the Inference Engine is active, this value limits the number of strings that will be found during the search of each object value. Note that limiting the number of strings can lead to incomplete results, however, performance is improved.

Process Settings - Execution

Execution Unit max size (MB) - only visible at Technology level.	See Working with Execution Units for more information.
--	--

Dependencies tab

Please see the [Dependencies tab](#) for more information about this.

Reference Pattern tab

Please see the [Reference Pattern tab](#) for more information about this.

See Also

[VB Reference Guide](#) | [Web Services \(J2EE\) Reference Guide](#)

