

# Components documentation for Report Generator 1.23

## On this page:

- [Configuring a Report Generator component for Microsoft Word and PowerPoint](#)
- [How to access component definitions in Microsoft Word](#)
  - [Text placeholders](#)
    - [Versions prior to Office 365](#)
    - [Office 365 versions](#)
  - [Graph placeholders](#)
    - [Versions prior to Office 365](#)
    - [Office 365 versions](#)
  - [Table placeholders](#)
- [How to access component definitions in Microsoft PowerPoint](#)
  - [Versions prior to Office 365](#)
  - [Office 365 versions](#)
- [How to configure components in Microsoft Excel](#)
- [Components list](#)
- [Where to find some examples and predefined reports](#)
- [Sample reports dependencies with CAST-RESTAPI and Quality Standard Mapping extension](#)
  - [Requirements](#)
  - [Templates](#)

## Configuring a Report Generator component for Microsoft Word and PowerPoint

The **Alt Text** field provided in Microsoft Office is used to configure the Report Generator "components":

- Report Generator will search within the Office document for text boxes, graphs and tables
- When one of these items is located, it will read the **Alt Text** value that is used for declaring the component

The syntax for configuring a placeholder is as follows:

```
<COMPONENT_TYPE>; <COMPONENT_ID>; <PARAM1NAME>=<PARAM1_VALUE>, <PARAM2_NAME>=<PARAM2_VALUE>, . . .
```



- No carriage return is accepted in this syntax, as this can cause errors
  - COMPONENT\_TYPE : can be TEXT, GRAPH or TABLE
  - COMPONENT\_ID : see the one you need in the components list
- Some parameters are mandatory others are not. Refer to the [components list](#) to see which parameters are expected for which component

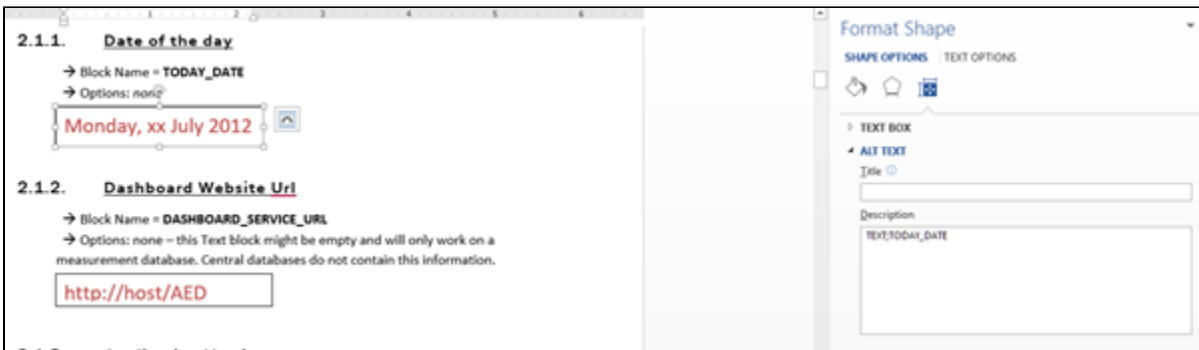
## How to access component definitions in Microsoft Word

You can copy/paste each object placeholder by selecting the full content, then you just have to modify Alt Text configuration to fit to your needs.

### Text placeholders

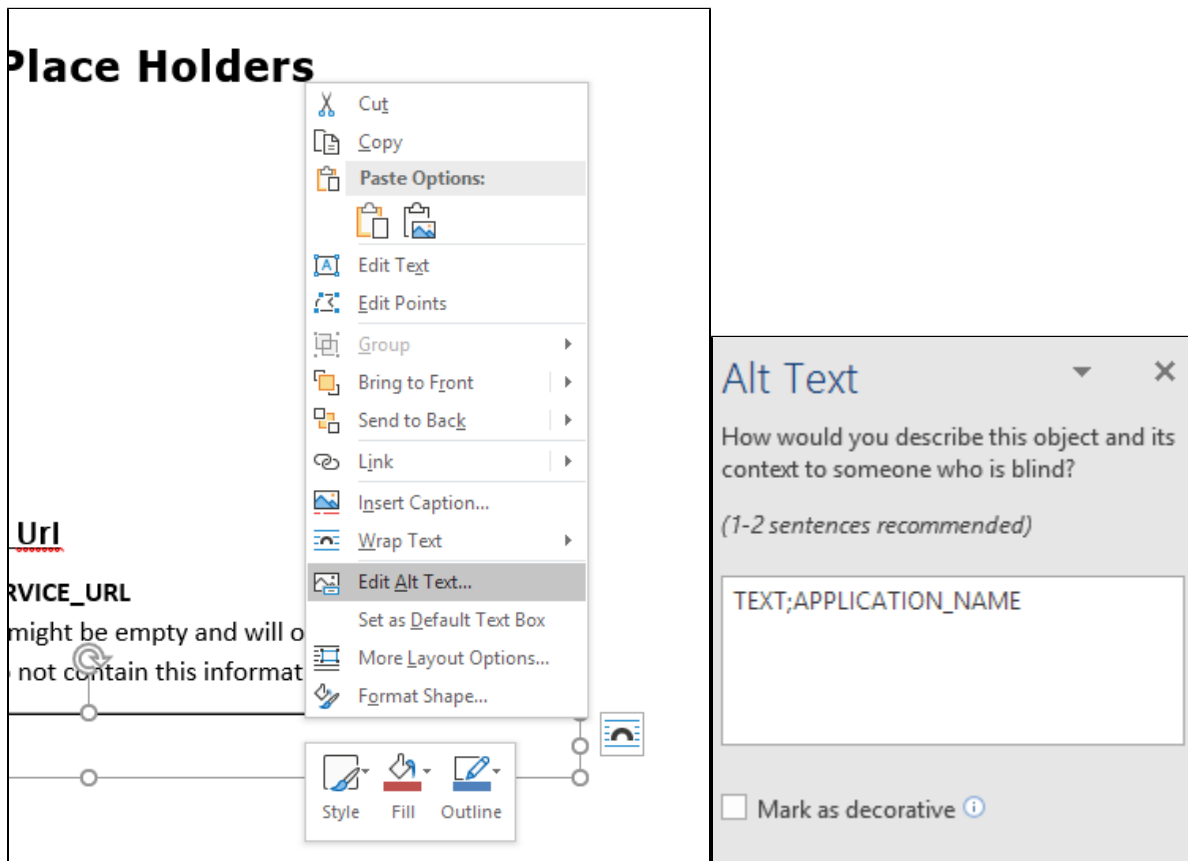
#### Versions prior to Office 365

Select the text box and right click to access the contextual menu. Then select **Format Shape**. In the **Format Shape** menu: **Shape Options > Layout & Properties > Alt Text**: fill in the **Description** field with the component options.



## Office 365 versions

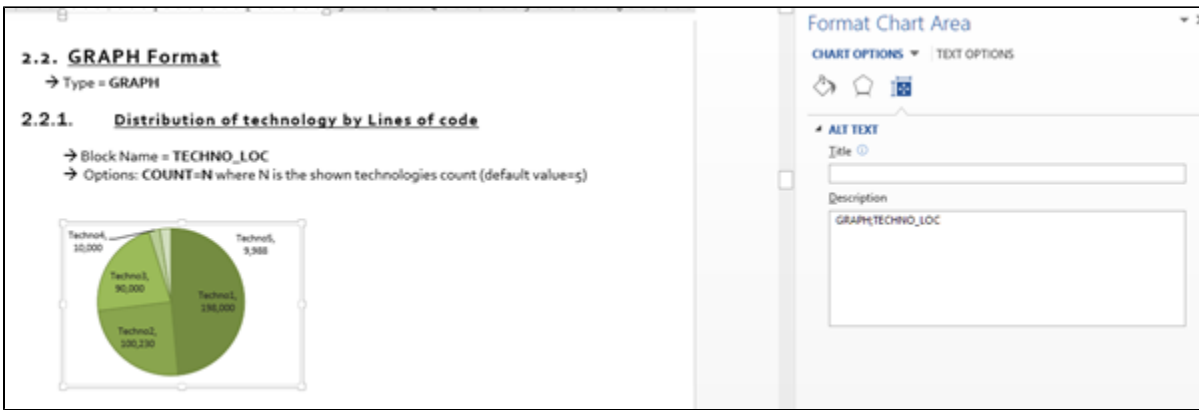
Select the text box and right click to access the contextual menu. Then select **Edit Alt Text**. If you can't find this command, you can search for **Display the Alt Text Pane** after having selected the text box. This command can be added to the Quick Access toolbar in Word.



## Graph placeholders

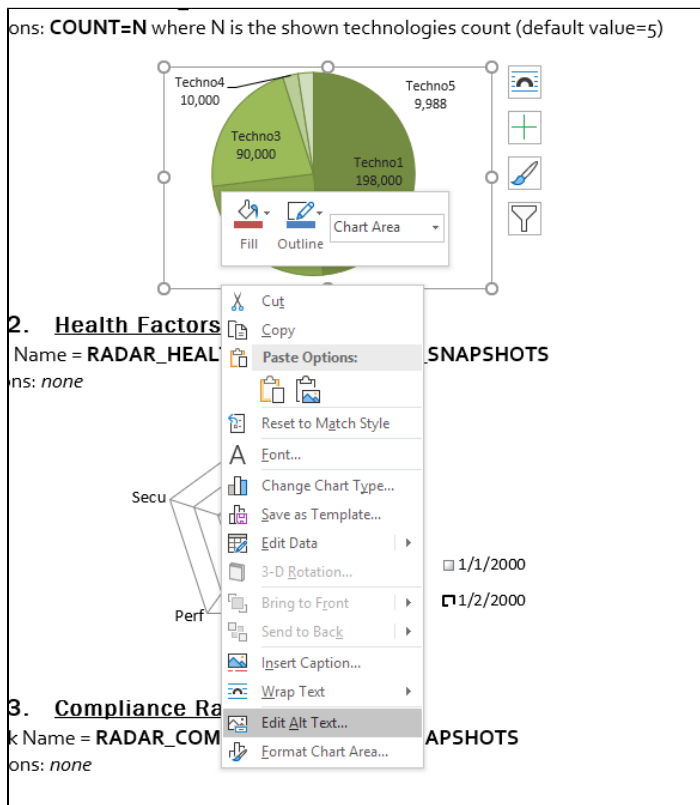
### Versions prior to Office 365

Select the chart, and right click to access the contextual menu. Then select **Format Chart Area**. In the **Format Chart Area** menu: **Chart Options > Layout & Properties > Alt Text**: fill in the Description field with the component options.



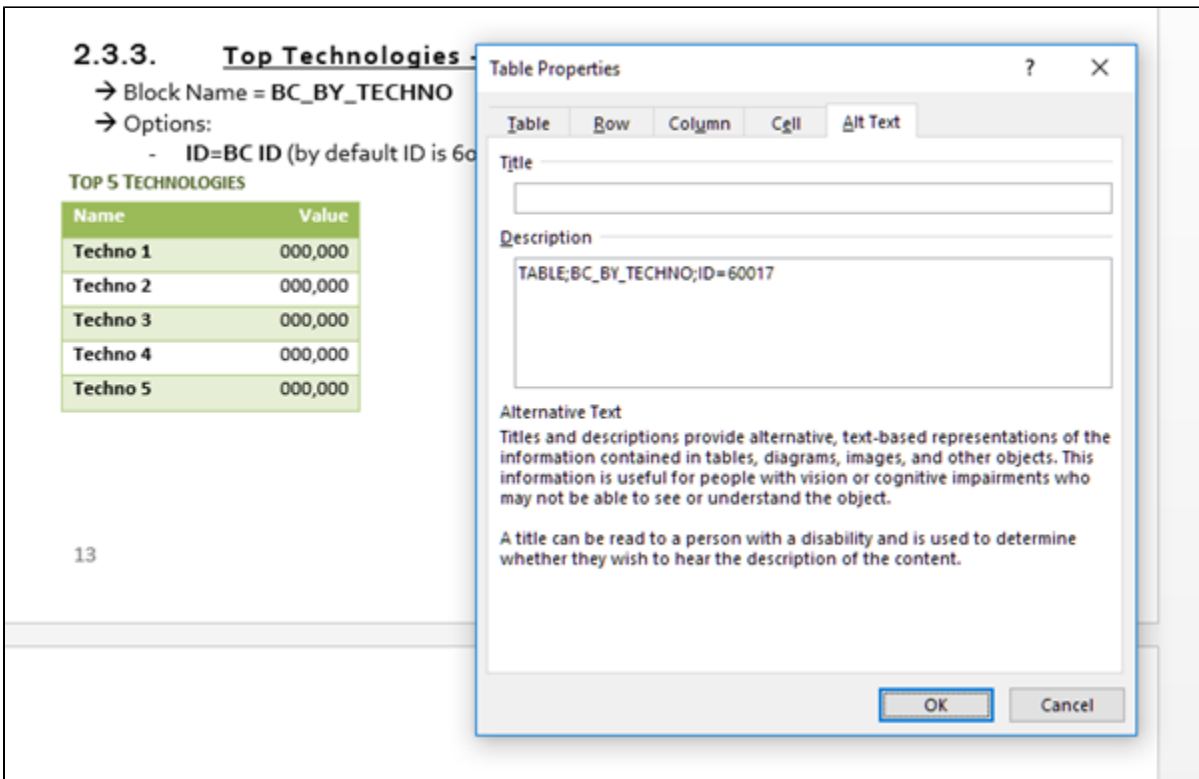
## Office 365 versions

Similar to text placeholders, select the chart and right click to access the contextual menu. Then select **Edit Alt Text**. If you can't find this command, you can search for **Display the Alt Text Pane** after having selected the chart.



## Table placeholders

Select the table and right click to access the contextual menu. Then select **Table Properties**. In the **Alt Text** tab, fill in the Description field.



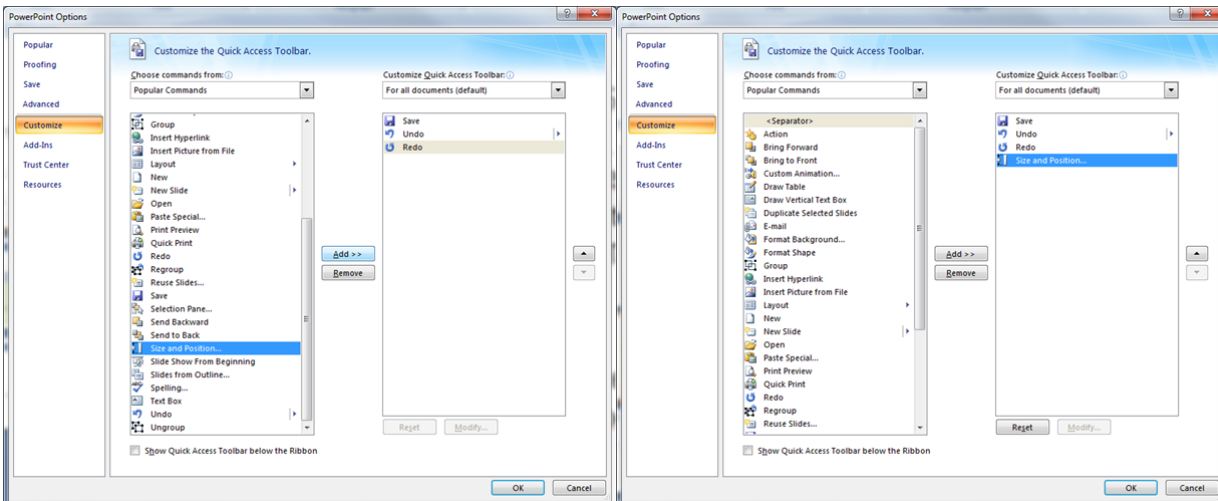
## How to access component definitions in Microsoft PowerPoint

In Microsoft PowerPoint, Text, Graph and Tables are configured in the same way as in Microsoft Word.

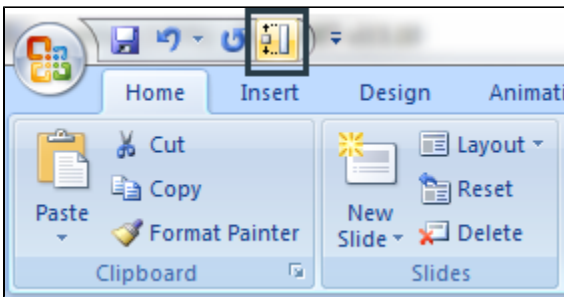
### Versions prior to Office 365

To see the alternative text property of all components, you should activate the **Size and Position** button in PowerPoint properties:

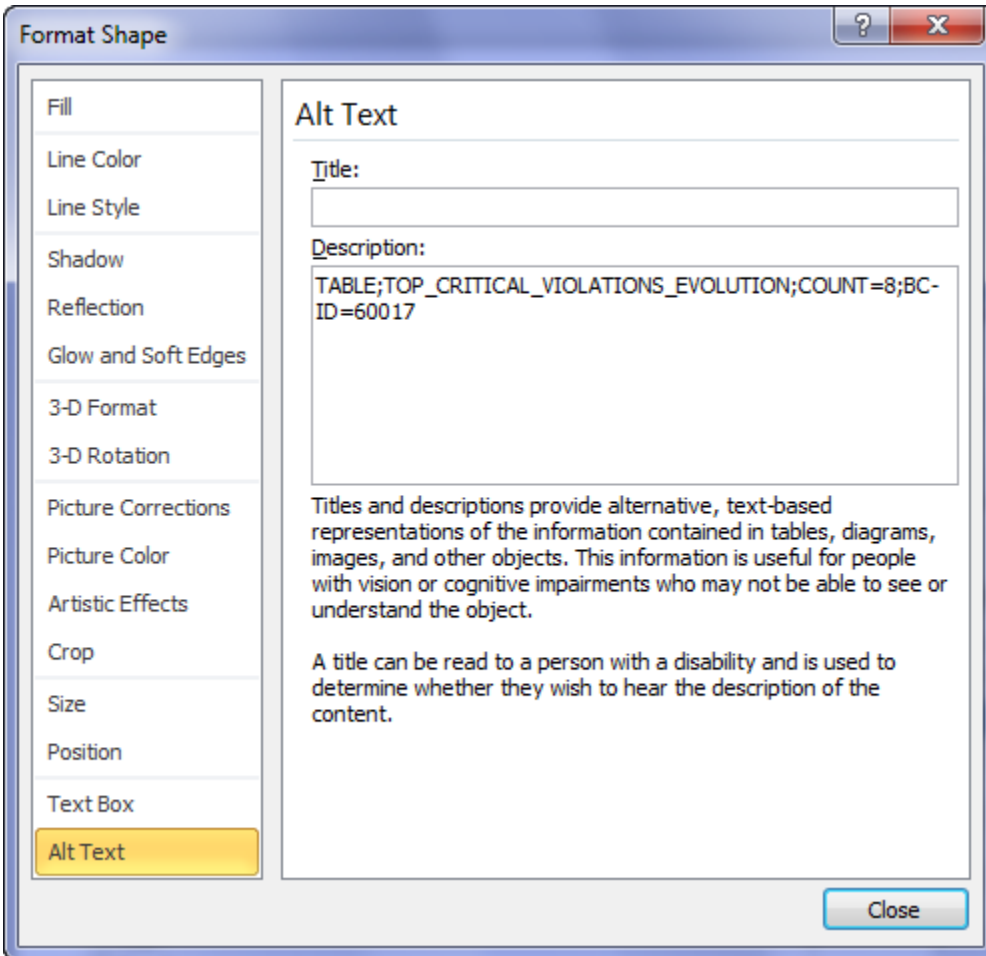
*Click to enlarge*



A new button will now be available alongside the Save and Undo/Redo buttons as shown below. This button gives you the possibility to access to the alternative text property of all components:

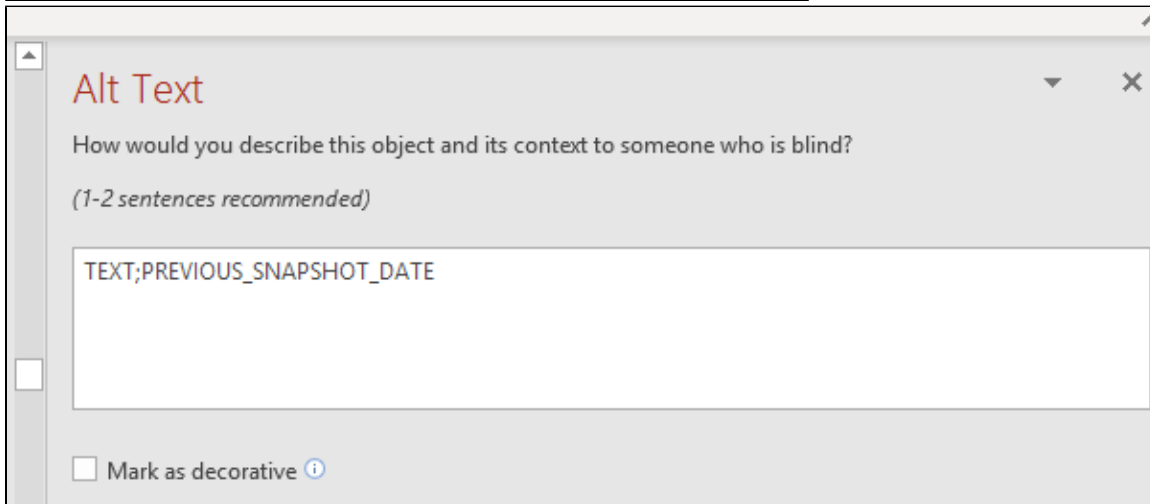
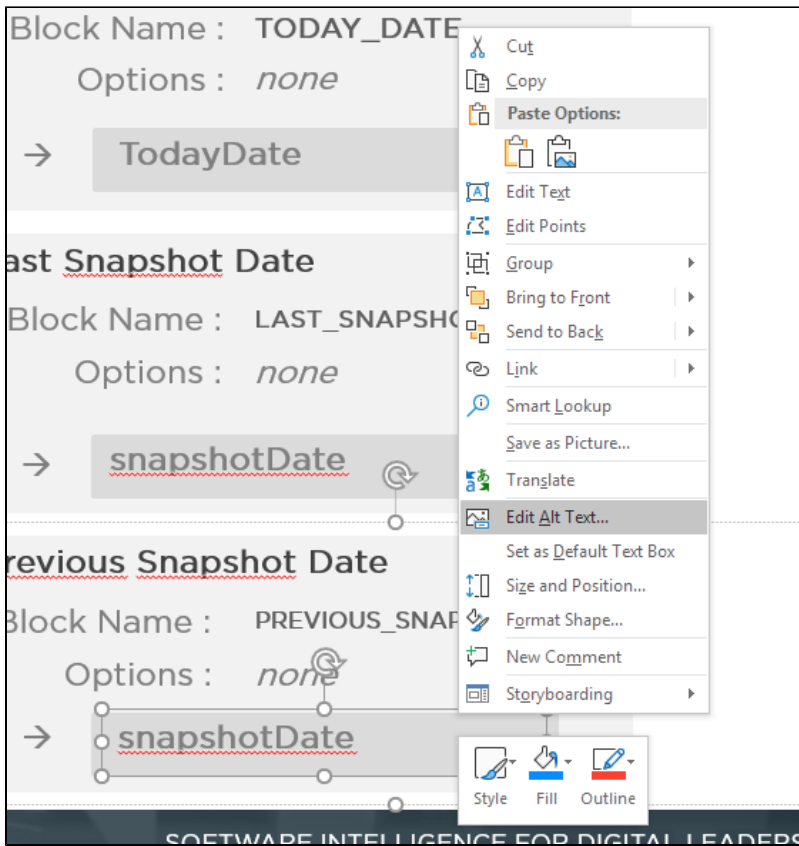


Now you can select a Shape and edit the alternative text property value:

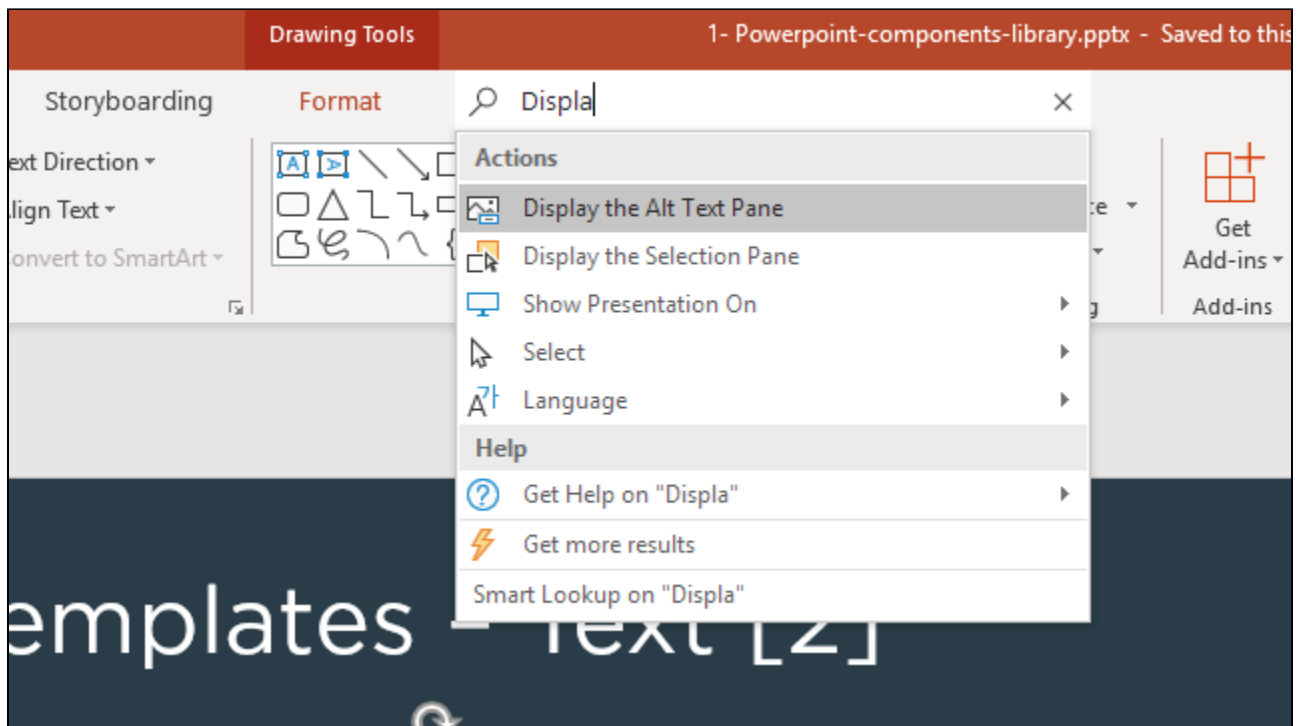


## Office 365 versions

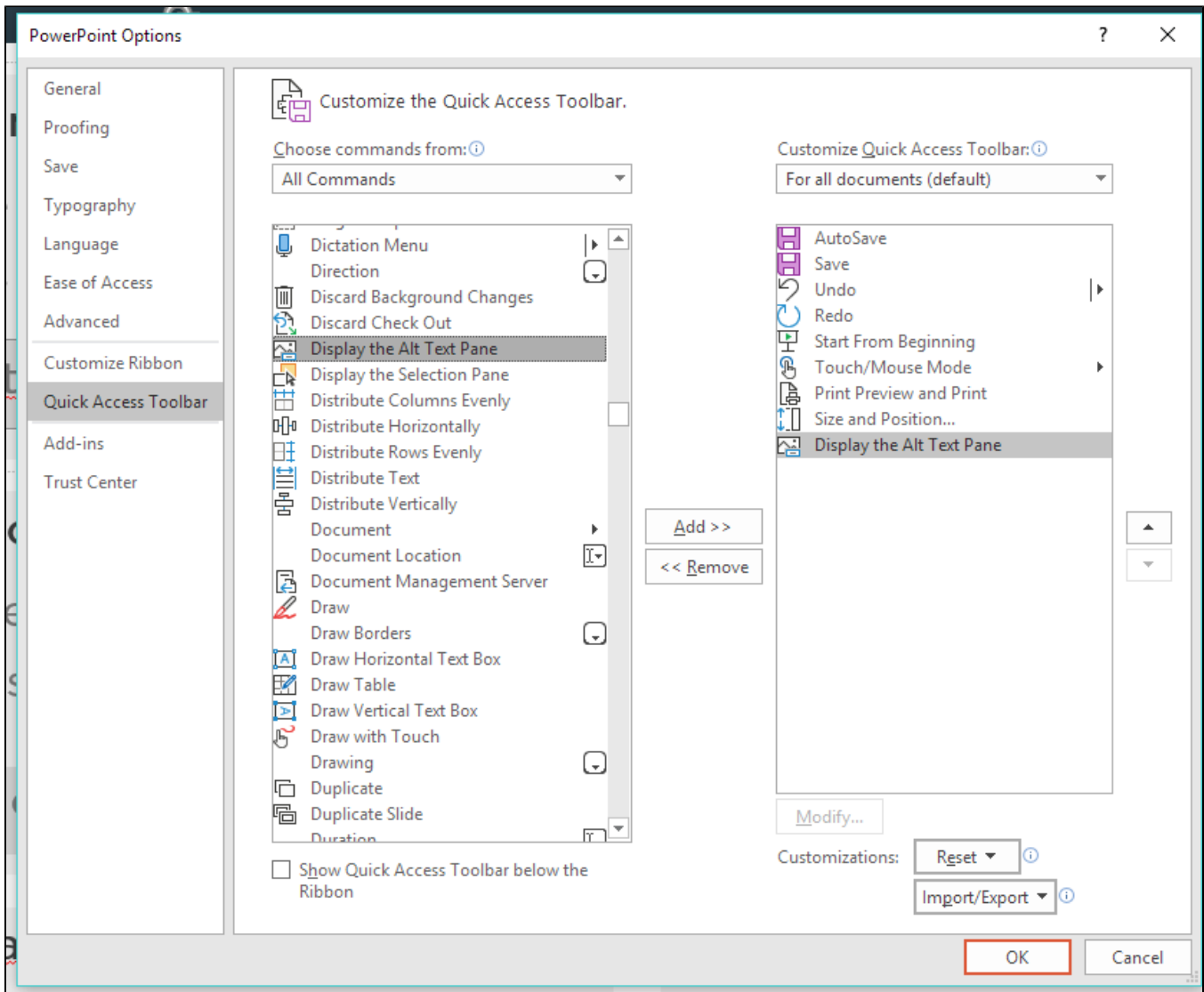
As with Microsoft Word, in Office 365, the Alt Text is no longer displayed in the **Size and Positions** pane. To access it, select the object and in the **right-click contextual menu**, select **Edit Alt Text**:



If you can't find the **Edit Alt Text** command in the contextual menu, you can search for **Display the Alt Text Pane** after having selected the object:



You can also customize the quick access toolbar with this command:



## How to configure components in Microsoft Excel

The general syntax for placeholders in Microsoft Excel is:

"RepGen:" prefix + block type (TEXT or TABLE, GRAPH is not supported) + block name and parameters

For instance, the application name can be retrieved using:

"RepGen:TEXT:APPLICATION\_NAME"

## Components list

<b>Text components</b>	<a href="#">Text components available for Report Generator 1.23</a>
<b>Graph components</b>	<a href="#">Graph components for Report Generator 1.23</a>
<b>Table components</b>	<a href="#">Table components for Report Generator 1.23</a>



<b>Generic components</b>	<a href="#">Generic components in Report Generator 1.23</a> All the "fantastic" things you can do with generic components for graphs and tables (GENERIC_GRAPH and GENERIC_TABLE)
---------------------------	--

## Where to find some examples and predefined reports

In 1.12.0 version, the reports templates location management has changed. When the RG is installed, there is still a folder Templates that is created, but it has been reviewed :

- the Application sub folder contains the hierarchy of templates that are used in application mode
  - the "Application\Component library" folder contains the example for all the application components
  - the "Application\Compliance reports" contains the security reports regarding quality standards
  - the "Application\Sizing reports" contains the reports concerning Function Points and AEP
  - the "Application\Legacy report" contains the old reports from Report Generator
- the Portfolio sub folder contains the hierarchy of templates that are used in portfolio mode
  - the "Portfolio\Portfolio component library" folder contains the example for all the portfolio components
- the zh-CN sub folder contains Portfolio and Application sub folders that are used when culture is set to Chinese.

The Report Generator now display the hierarchy of folders for each mode and you can navigate through this hierarchy to find the desire template. The command line is also able to find the template by its name in this hierarchy (no need to give the entire path). User is free to add its own templates in this hierarchy, and he can create subfolders inside Application and Portfolio folders, they will be seen in the tree view. If user want to change the settings and update the root folder for the templates, he should not forget to locate his templates in sub folders Application and Portfolio (depending on their use). If not, the Report Generator will not be able to find his templates.

## Sample reports dependencies with CAST-RESTAPI and Quality Standard Mapping extension

Those reports can only be generated on an application domain.

### Requirements

- CAST-RESTAPI >= 2.4.0
- Quality standards mapping extension, CISQ, ISO-5055, OWASP index extensions >= 20211122.0.0-funcrel
- OMG Automated or Contextual Technical Debt Measure >= 2.0.0-funcrel

### Templates

Location	Report Name	Status
Portfolio\Portfolio component library	1- Portfolio-Powerpoint-components-library.pptx	
Portfolio\Portfolio component library	2- Porfolio-Word-components-library.docx	
Portfolio\Portfolio component library	Portfolio Generic Graph Definition.docx	
Portfolio\Portfolio component library	Portfolio Generic Table Definition.pptx	
Application\Component library	1- Powerpoint-components-library.pptx	Updated
Application\Component library	2- Word-components-library.docx	Updated
Application\Component library	3- Excel-components-library.xlsx	Updated
Application\Component library	Generic Graph Definition.docx	
Application\Component library	Generic Graph Definition.pptx	
Application\Component library	Generic Table Definition.docx	
Application\Component library	Generic Table Definition.pptx	
Application\Compliance reports	C-CPP Standards Compliance Report.docx	
Application\Compliance reports	C-CPP Standards Detailed Report.docx	
Application\Compliance reports	C-CPP Standards Full Detailed Report.xlsx	
Application\Compliance reports	CWE (2011) Top 25 Compliance Report.docx	

Application\Compliance reports	CWE (2011) Top 25 Detailed Report.docx	
Application\Compliance reports	CWE (2011) Top 25 Full Detailed Report.xlsx	
Application\Compliance reports	CWE (2019) Top 25 Compliance Report.docx	
Application\Compliance reports	CWE (2019) Top 25 Detailed Report.docx	
Application\Compliance reports	CWE (2019) Top 25 Full Detailed Report.xlsx	
Application\Compliance reports	CWE (2020) Top 25 Compliance Report.docx	
Application\Compliance reports	CWE (2020) Top 25 Detailed Report.docx	
Application\Compliance reports	CWE (2020) Top 25 Full Detailed Report.xlsx	
Application\Compliance reports	CWE (2021) Top 25 Compliance Report.docx	
Application\Compliance reports	CWE (2021) Top 25 Detailed Report.docx	
Application\Compliance reports	CWE (2021) Top 25 Full Detailed Report.xlsx	
Application\Compliance reports	CWE Compliance Report.docx	
Application\Compliance reports	CWE Detailed Report.docx	
Application\Compliance reports	CWE Full Detailed Report.xlsx	
Application\Compliance reports	ISO-5055 Compliance Report.docx	
Application\Compliance reports	ISO-5055 Detailed Report.docx	
Application\Compliance reports	ISO-5055 Full Detailed Report.xlsx	
Application\Compliance reports	ISO-5055 Compliance Report - OMG Technical Debt.docx	
Application\Compliance reports	ISO-5055 Detailed Report - OMG Technical Debt.docx	
Application\Compliance reports	ISO-5055 Full Detailed Report - OMG Technical Debt.xlsx	
Application\Compliance reports	MIPS Reduction Compliance Report.docx	
Application\Compliance reports	MIPS Reduction Detailed Report.docx	
Application\Compliance reports	MIPS Reduction Full Detailed Report.xlsx	
Application\Compliance reports	NIST-SP800-53R4 Compliance Report.docx	
Application\Compliance reports	NIST-SP800-53R4 Detailed Report.docx	
Application\Compliance reports	NIST-SP800-53R4 Full Detailed Report.xlsx	
Application\Compliance reports	OMG-ASCQM Compliance Report.docx	
Application\Compliance reports	OMG-ASCQM Detailed Report.docx	
Application\Compliance reports	OMG-ASCQM Full Detailed Report.xlsx	
Application\Compliance reports	OMG-ASCQM Security Compliance Report.docx	
Application\Compliance reports	OMG-ASCQM Security Detailed Report.docx	
Application\Compliance reports	OMG-ASCQM Security Full Detailed Report.xlsx	
Application\Compliance reports	OWASP-2013 Compliance Report.docx	
Application\Compliance reports	OWASP-2013 Detailed Report.docx	
Application\Compliance reports	OWASP-2013 Full Detailed Report.xlsx	
Application\Compliance reports	OWASP-2017 Compliance Report.docx	
Application\Compliance reports	OWASP-2017 Detailed Report.docx	
Application\Compliance reports	OWASP-2017 Full Detailed Report.xlsx	
Application\Compliance reports	OWASP-API-2019 Compliance Report.docx	
Application\Compliance reports	OWASP-API-2019 Detailed Report.docx	
Application\Compliance reports	OWASP-API-2019 Full Detailed Report.xlsx	

Application\Compliance reports	OWASP-API-2021 Compliance Report.docx	
Application\Compliance reports	OWASP-API-2021 Detailed Report.docx	
Application\Compliance reports	OWASP-API-2021 Full Detailed Report.xlsx	
Application\Compliance reports	OWASP-Mobile-2016 Compliance Report.docx	
Application\Compliance reports	OWASP-Mobile-2016 Detailed Report.docx	
Application\Compliance reports	OWASP-Mobile-2016 Full Detailed Report.xlsx	
Application\Compliance reports	PCI-DSS-V3.1 ComplianceReport.docx	
Application\Compliance reports	PCI-DSS-V3.1 Detailed Report.docx	
Application\Compliance reports	PCI-DSS-V3.1 Full Detailed Report.xlsx	
Application\Compliance reports	PCI-DSS-V3.2.1 ComplianceReport.docx	
Application\Compliance reports	PCI-DSS-V3.2.1 Detailed Report.docx	
Application\Compliance reports	PCI-DSS-V3.2.1 Full Detailed Report.xlsx	
Application\Compliance reports	STIG V4R8 Compliance Report.docx	
Application\Compliance reports	STIG V4R8 Detailed Report.docx	
Application\Compliance reports	STIG V4R8 Full Detailed Report.xlsx	
Application\Compliance reports	STIG V5 Compliance Report.docx	
Application\Compliance reports	STIG V5 Detailed Report.docx	
Application\Compliance reports	STIG V5 Full Detailed Report.xlsx	
Application\Legacy reports	CISQ Compliance Report.docx	Legacy
Application\Legacy reports	CISQ Detailed Report.docx	Legacy
Application\Legacy reports	CISQ Full Detailed Report.xlsx	Legacy
Application\Legacy reports	CISQ Security Compliance Report.docx	Legacy
Application\Legacy reports	CISQ Security Detailed Report.docx	Legacy
Application\Legacy reports	CISQ Security Full Detailed Report.xlsx	Legacy
Application\Legacy reports	Assessment-sample1.docx	Legacy
Application\Legacy reports	Assessment-sample2.docx	Legacy
Application\Legacy reports	Assessment-Security1.docx	Legacy
Application\Legacy reports	Assessment-Security2.docx	Legacy
Application\Legacy reports	Executive-summary.docx	Legacy
Application\Legacy reports	Executive-summary-sample1.pptx	Legacy
Application\Legacy reports	Executive-summary-sample2.pptx	Legacy
Application\Sizing reports	AEP-sample-Template.xlsx	Updated
Application\Sizing reports	Function-points-sample.xlsx	