

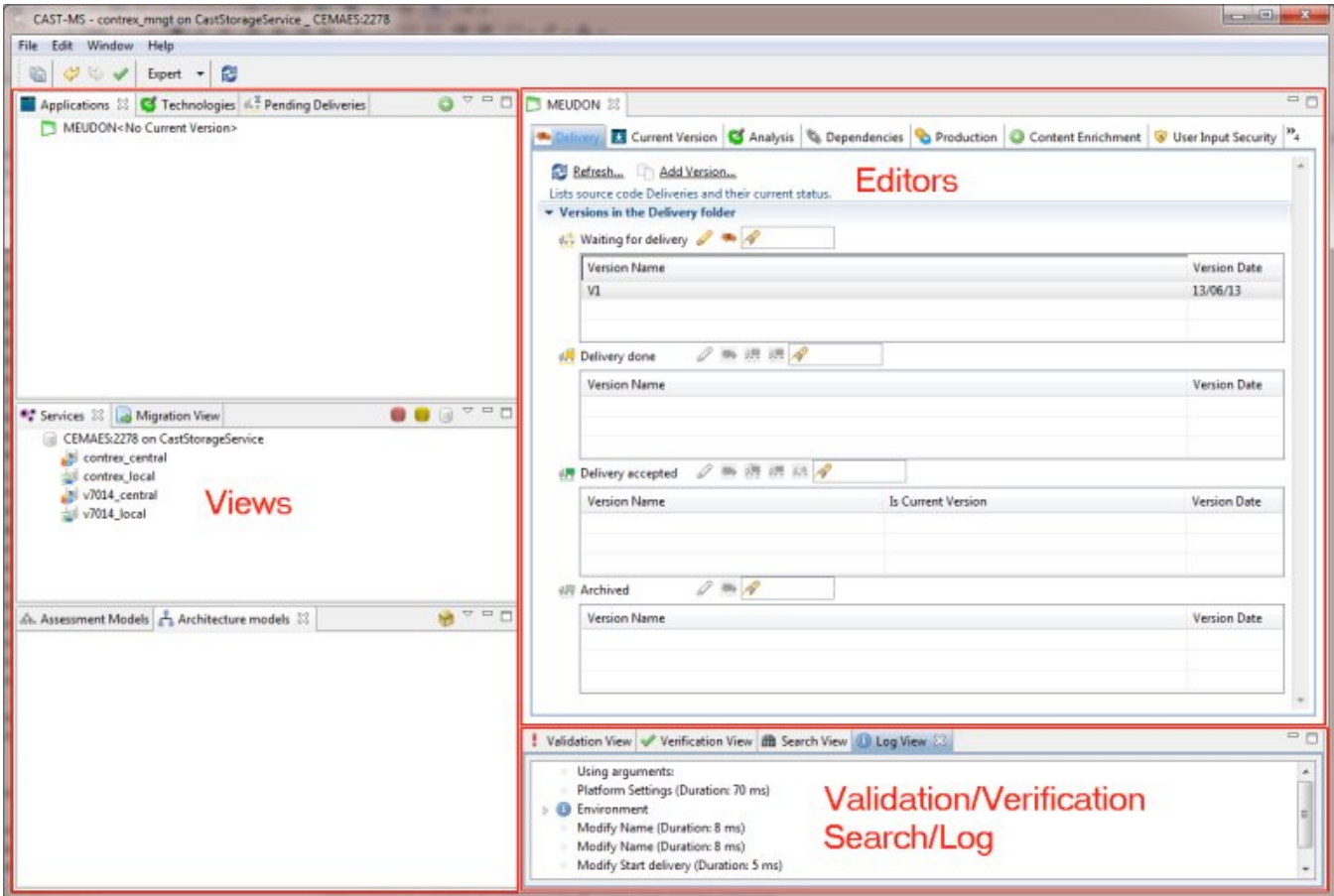
CMS - What's in the CAST Management Studio?

What's in the CAST Management Studio?

This section provides a detailed description of the contents of the CAST Management Studio - in other words, what elements and components are available in the Graphical User Interface (GUI).

The main elements available in the CAST Management Studio are:

- [Views](#)
- [Editors](#)
- [Validation/Verification/Search/Log](#)
- [Help](#)



See Also

[Menu](#) | [Toolbar](#) | [Customizing View and Editor layout](#)