


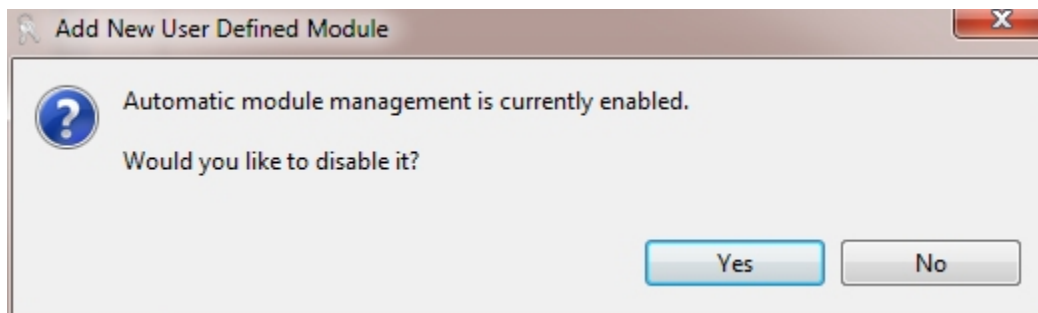
CMS - Define a User Defined Module

Define a User Defined Module


User Defined Modules are used extensively in the **CAST Engineering Dashboard** as a means to configure analysis content into meaningful groups or sets - indeed objects cannot be seen in the CAST Engineering Dashboard if they are not part of a Module (whether Automatic or User Defined). As such the editor provides a means to set up an **Object Filter** on your analysis results source code (using the Technology, Analysis Units, Object Types and Object Names filter criteria) in order to define the content you require. See [Modules tab](#) and [User Defined Module editor](#)

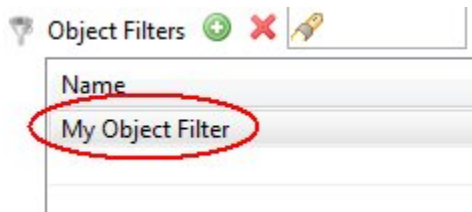
- In the [Applications view](#), double click an Application. This will open the [Application editor](#).
- Select the **Modules tab** (you must be working in **Advanced** or **Expert mode** to see this tab - see [Toolbar](#) for more information about changing the User Interface mode):

- Click the  button to **add** a User Defined Module - CAST recommends having first [run an analysis](#) or having [generated a Snapshot](#) (this enables you to view the contents of the User Defined Module before you put it into production).
- If one of the Automatic Module creation options is selected and you do not have any existing User Defined Modules, you will be prompted to choose whether to **retain** the Automatic Module(s) or **remove** them all:



- If you choose **Remove**, all Automatic Modules will be unticked and none will be created during the next snapshot generation (any existing Automatic Modules will not be removed. If you choose **Keep**, any Automatic Module selections will be retained.
- The [User Defined Module editor](#) will then be displayed enabling you to configure the module.
- Enter a **name** for the **User Defined Module** - this can be anything. In this example we have used **BILLING** because the Module will ultimately contain the results of the analyses of a Billing system (server and client technologies).

- If this is a new User Defined Module, then you should already see an **Object Filter** called (called "My Object Filter") in the Object Filters list. If not, click the  button located above the editor to add an **Object Filter**:



- Select the "My Object Filter" entry to display the configuration settings in the sections below:

The screenshot shows the configuration settings for the 'My Object Filter'. At the top, there is a 'Name' field containing 'My Object Filter' and a 'Filter selection overview' link. Below this are several sections:

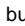
- Technology selection:** Includes a 'Technology' dropdown menu with options '<None>', 'Select...', and 'Remove'.
- Analysis Units selection:** Includes a 'Filter mode' section with radio buttons for 'Don't filter on analysis units' (selected) and 'Filter on analysis units (choose below)'. Below this is an 'Analysis units' section with a list of analysis units.
- Type selection:** Includes an 'Object Types Filter' section with radio buttons for 'Don't filter on object types' (selected) and 'Filter on object types (choose below)'. Below this is a 'Selected Types' section with a list of object types.
- Name selection:** Includes an 'Object Names filter' section with radio buttons for 'Don't filter on object names' (selected) and 'Filter on object names (choose below)'. Below this is an 'Expression' section with a text input field.

At the bottom, there is a table with columns for 'Pattern', 'Field', and 'Operator'.

- First enter a **Name** and to identify your Object Filter.
- Next choose the type of filter you would like to create or a combination of all three:
 - on Technology
 - on Analysis Units
 - on types
 - on names
- Use the detailed information in the [User Defined Module editor](#) to help you configure the filter as required.

Completion

Please now do the following:

- Use the Module content overview and Filter content selection options in the [User Defined Module editor](#) to help test the objects that will be part of the User Defined Module.
- Now check the [Validation view](#) and correct any errors you see.
- Perform a [Save All](#), using the  button located on the toolbar. This will save your modifications to the CAST Management Studio database.

See Also

[Generate a Snapshot](#)