

CAST Engineering Dashboard - PRI RPF and VI

Purpose

This page helps you to troubleshoot issues with PRI , RPF and VI. These values are present in the below views of dashboard -

- [Investigation - Quality Model Drilldown](#)
- [Risk Indicators - Object Level](#)

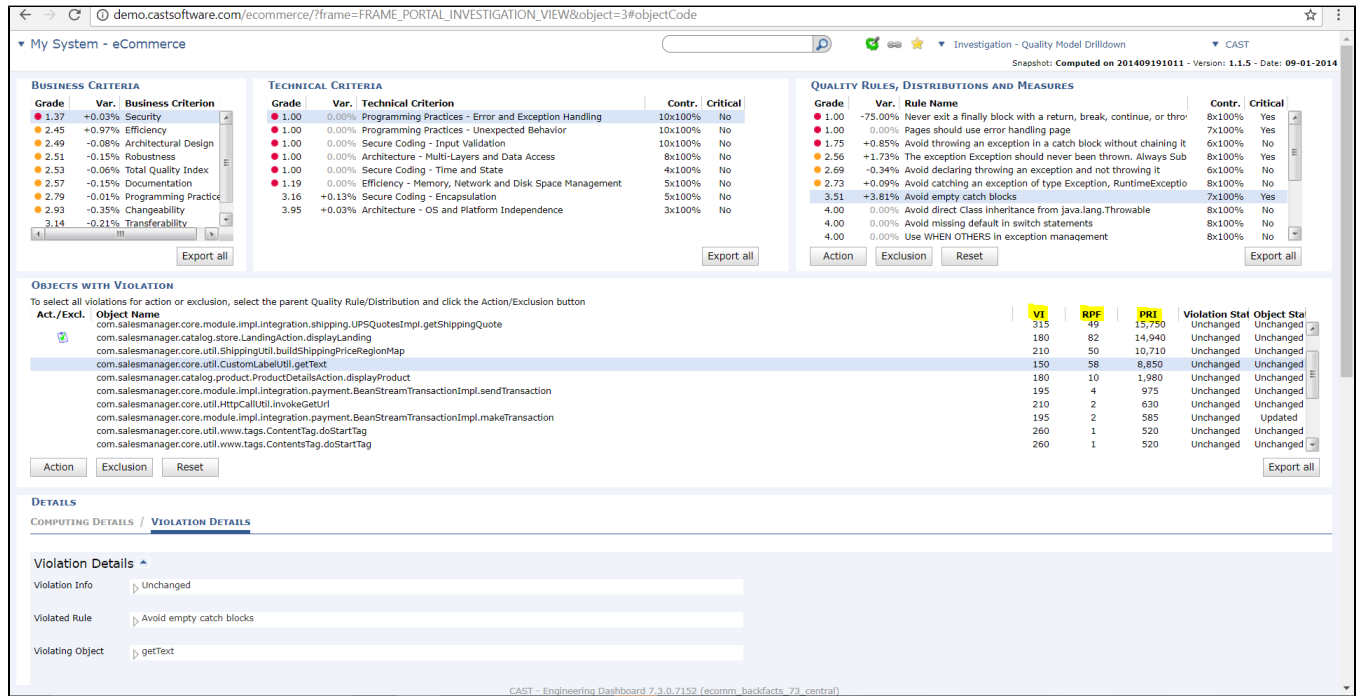


Figure 1

For more details on how these values are calculated please refer to the below page -

[Risk Indicators - Object Level - Violation List](#)

For more information, refer to:

Official Documentation

For 8.3 : [User profiled pages](#)

Information Guides

[Information Guides by CAST AIP Component > CAST Engineering Dashboard CED](#)

Observed in CAST AIP

Release	Yes/No
8.3.x	✓

Observed on RDBMS

RDBMS	Yes/No
CSS	✓

Action Plan

1. Select the section you are interested in.
 - [CAST Engineering Dashboard - PRI RPF and VI - Incorrect Value](#)
2. If the problem you are facing does not match any case listed in this page, report your problem to [CAST Technical Support](#) and provide the below [Relevant input](#):

For CAST Technical Support Only - Calculate the value of the PRI , VI , RPF using the page - [Risk Indicators - Object Level - Violation List](#)

Relevant input

- [CAST Support Tool \(CST\) - alias Sherlock](#) export with the following options **CAST Bases Checker, Export Logs, Export Configuration files, Export Computer Environment, Export CAST Bases** with Management Base, Knowledge Base, Central base, Measurement Base
- Complete screenshot of the dashboard with URL and footer showing your problem

Notes/comments

Related Pages