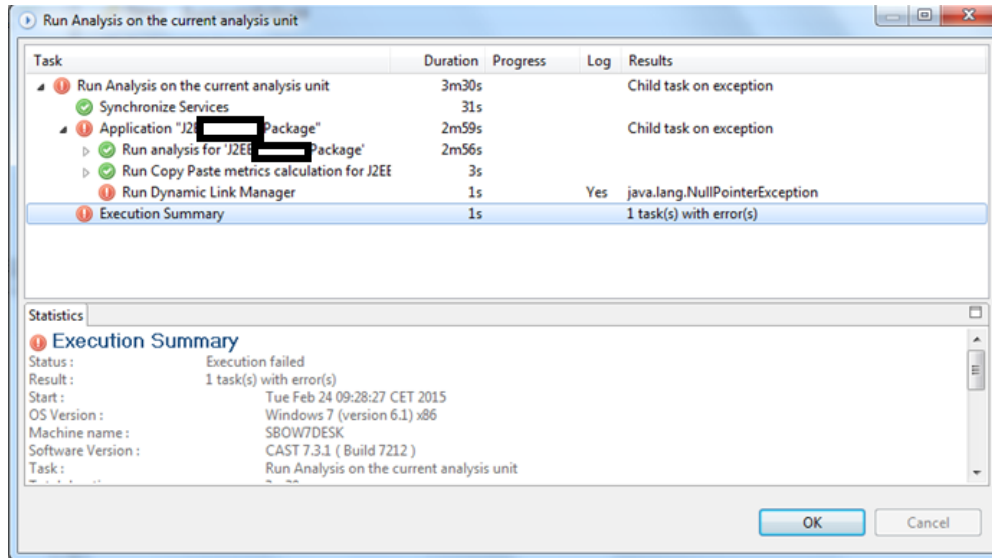


CMS Snapshot Analysis - Run Dynamic Link Manager - Fatal Error

*Purpose

This page will help you solve Fatal Error problems related to Run Dynamic Link Manager.

Sample Screenshot of fatal error during Run Dynamic Link Manager is shown below.



To get information about different log files, their locations and to understand and explore log files as per the feature, refer to [CAST Management Studio - Information - How to find logs](#)

*Observed in CAST AIP

Release	Yes/No
8.3.x	✓
8.2.x	✓
8.1.x	✓
8.0.x	✓
7.3.x	✓
7.2.x	✓
7.0.x	✗

*Observed on RDBMS

RDBMS	Yes/No
Oracle Server	✓
Microsoft SQL Server	✓
CSS3	✓
CSS2	✓
CSS1	✗

Action Plan*

1. Navigate to the following pages to solve your issue.
 - [CMS Snapshot Analysis - Run Dynamic Link Manager - Fatal Error - An error occurred while reading from the store providers data reader](#)
 - [CMS Snapshot Analysis - Run Dynamic Link Manager - Fatal Error - Exception is System NotSupportedException The given paths format is not supported](#)
 - [CMS Snapshot Analysis - Run Dynamic Link Manager - Fatal Error - java.lang.RuntimeException](#)
 - [CMS Snapshot Analysis - Run Dynamic Link Manager - Fatal Error - java.io.FileNotFoundException ExecutionPlan dlm.xml Access is denied](#)
 - [CMS Snapshot Analysis - Run Dynamic Link Manager - Fatal Error - Loading failed System.ArgumentException The parameter is incorrect](#)
 - [CMS Snapshot Analysis - Run Dynamic Link Manager - Fatal Error - System Exception No connection profile called XXX](#)
 - [CMS Snapshot Analysis - Run Dynamic Link Manager - Fatal Error - TargetInvocationException InvariantName is constrained to be unique](#)
 - [CMS Snapshot Analysis - Run Dynamic Link Manager - Fatal Error - Timeout and Out Of Memory](#)
 - [CMS Snapshot Analysis - Run Dynamic Link Manager - Fatal Error - too many clients already](#)
2. If the above pages do not help you to resolve the issue, contact [CAST Technical Support](#) and provide the following [Relevant Input](#) to reproduce the issue.

Notes

Related Pages