

Delivery Manager Tool - Information - Package Extraction - How to get Castextraction file

Purpose

This page provides information on how to get the .castextraction file.

Applicable in CAST Version

Release	Yes/No
8.3.x	✓
8.2.x	✓

Applicable RDBMS

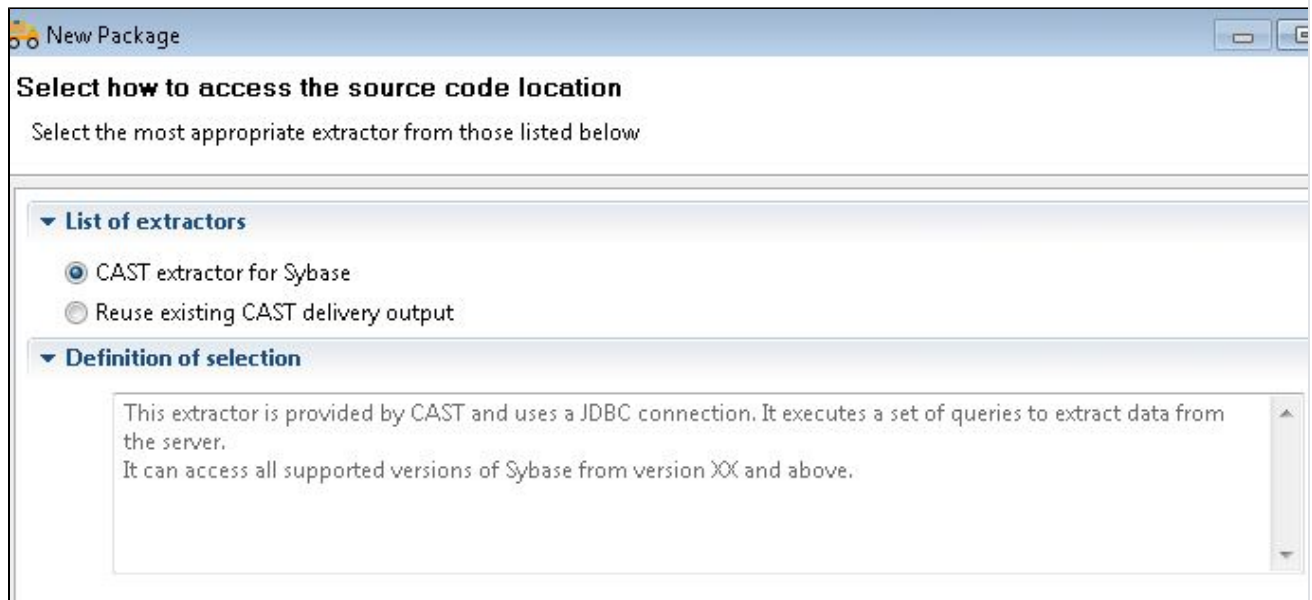
RDBMS	Yes/No
Oracle Server	✓
Microsoft SQL Server	✓
CSS2	✓
CSS3	✓

Details

Here this page is explained by taking an example for Sybase, however this is valid for Oracle, MS SQL server, DB 2 as well.

In Delivery Manager Tool, we have two option for the extraction:

1. CAST Extraction for Sybase
2. Reuse existing CAST delivery output



With 1st option i.e. CAST Extraction for Sybase: The .castextraction is inside the sources.CastSourcePackage of delivery folder. To get this you need to unzip it and it is inside the Meta Folder

For example : sources.CastSourcePackage is placed at :

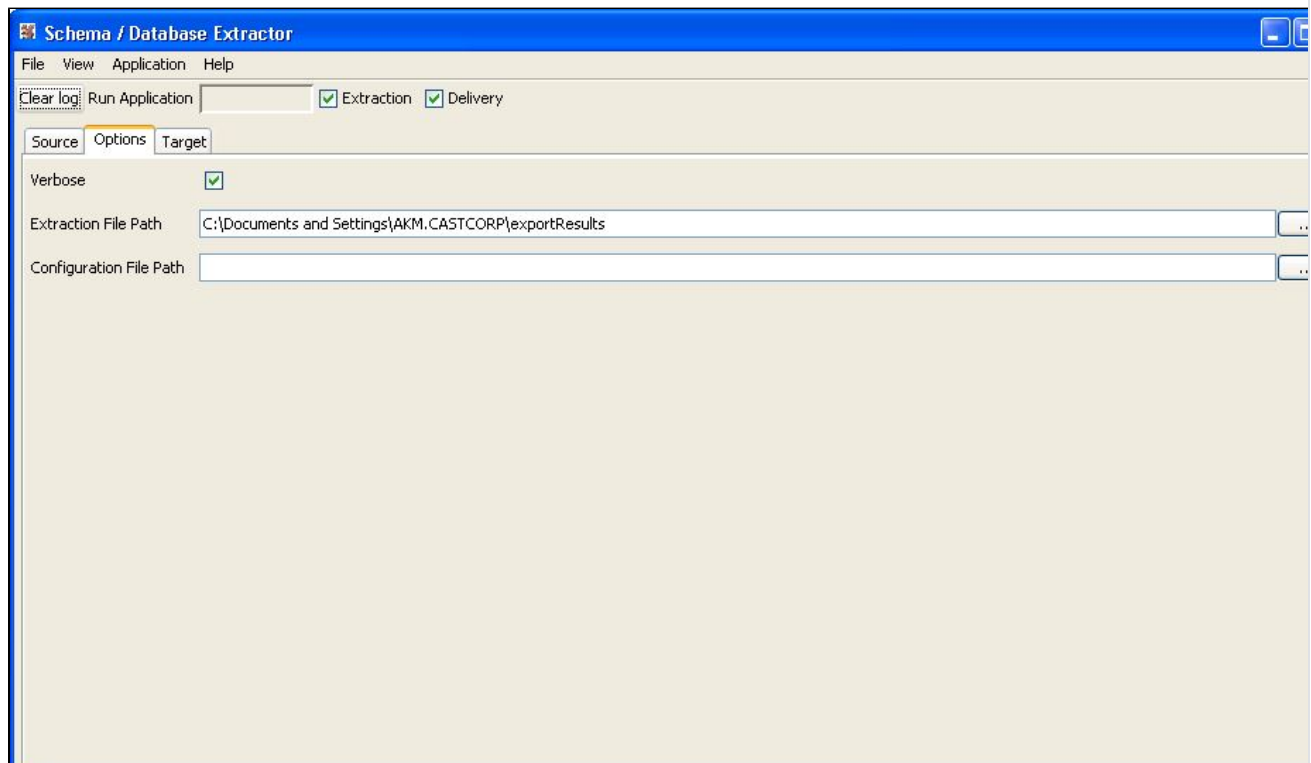
XXXXX\Delivery\CAST\CASTMS\Delivery\data\{c6a7175d-8735-4acc-8df0-56b50fe44be3}\{9b6e65d7-38bc-4d17-9763-e51ea91a6cca}\{6ff73ff5-7280-422b-8465-32a6e4daebb2}\

After Unzip, It is can at:

XXXXX\Delivery\CAST\CASTMS\Delivery\data\{c6a7175d-8735-4acc-8df0-56b50fe44be3}\{9b6e65d7-38bc-4d17-9763-e51ea91a6cca}\{6ff73ff5-7280-422b-8465-32a6e4daebb2}\sources\meta\squirrel.castextraction

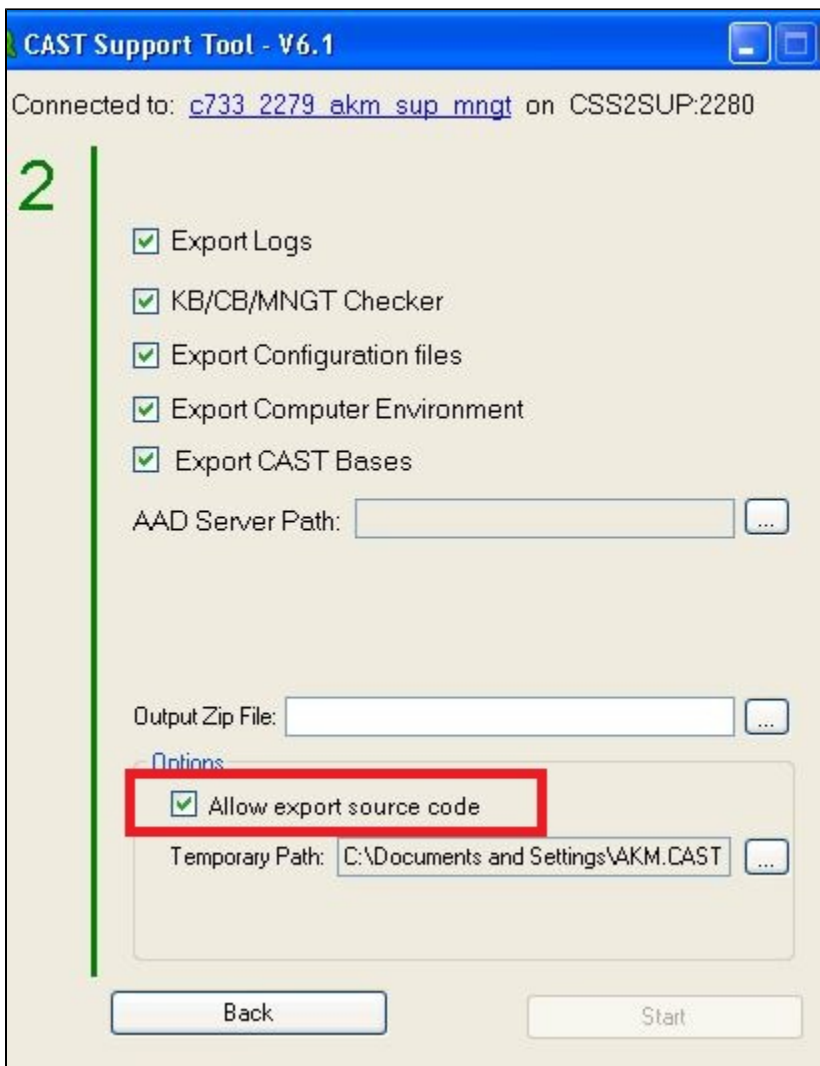
With 2nd option i.e. Reuse existing CAST delivery output: The .castextraction is not created in sources.CastSourcePackage and hence not in Delivery folder.

You can retrieve these .castextraction files on the machine where you have run the Extraction/delivery processing.
The default location is : C:\Documents and Settings<User>\exportResults



Note:

Delivery folder is also fetched with Sherlock, but to get the sources.CastSourcePackage, you need to make sure to select the option : "Allow export source code" as shown below.



Notes/comments

Related Pages