

# CMS Snapshot Analysis - Run Analyzer - Fatal Error

## Purpose

The fatal error can occur in every step of the Analysis. It is visible in the Log file.

For more information, refer to:

- Official 8.3 Documentation - [Run and validate the analysis](#)
  - Official 8.2 Documentation - [Run the Analysis](#)
  - Official 8.1 Documentation - [Run the Analysis](#)
  - Official 8.0 Documentation - [Run the Analysis](#)
  - Official 7.3 Documentation - [Run the Analysis](#)
- 
- Online-help : CAST Management Studio - Help > How To > Regular audience > Run analysis only
  - Information Guides [CMS Snapshot Analysis](#)
  - Error Free Logs - [CMS Snapshot Analysis - Run Analysis for Technology - Error Free Logs - CAST AIP 8](#)

## Observed in CAST AIP

Release	Yes/No
8.3.x	✓
8.2.x	✓
8.1.x	✓
8.0.x	✓
7.3.x	✓

## Observed on RDBMS

RDBMS	Yes/No
Oracle Server	✓
Microsoft SQL Server	✓
CSS3	✓
CSS2	✓

## Step by Step scenario

1. Package and Deliver an application.
2. Set the version as current Version.
3. Run the Analysis.
4. An Error / Fatal error is raised in the log file and the analysis stops.

## Action Plan

Perform the following steps:

1. If the error is related to network issue like **The specified network name is no longer specified** as seen below in the screen shot, establish a new connection by re-launching CAST-MS and run the analysis which should run fine.

2017-12-13 07:30:25.600		Inference Engine resolution statistics[...]
2017-12-13 07:30:32.480		<b>Error</b> error occurred while deserializing instances : The specified network name is no longer available.
2017-12-13 07:31:07.646		<b>Information</b> New Job status
2017-12-13 07:31:07.646		<b>Information</b> Execution date=2017/12/13 06:30
2017-12-13 07:31:07.646		<b>Information</b> Execution duration=0 days, 01 hours, 53 mins, 27 secs
2017-12-13 07:31:07.646		<b>Information</b> Execution result=error
2017-12-13 07:31:07.646		0 fatal error(s); 1 error(s); 501 warning(s); 17 information message(s).

2. Check if the fatal error is due to lack of disk space on the database server as shown below

```

Analysis log file

ERROR: could not extend file "base/l2002/t8_1006387": No space left on device.
HINT: Check free disk space..
CONTEXT: SQL statement "create index IDX_TMP_WK_ID on TMP_WK_ID (SOURCE_ID, TARGET_ID)".
PL/pgSQL function amt_p_diff_lnk(integer) line 333 at SQL statement.
SQL statement "select AMT_P_DIFF_LNK (I_IDSESSION)".
PL/pgSQL function amt_p_build(integer) line 96 at SQL statement.
SQL statement "select AMT_P_BUILD (I_IDSESSION)".
PL/pgSQL function cache_processid(integer,integer) line 21 at SQL statement (Severity 1, Msg No 1).

```

- a. Check that all the configuration/hardware requirements details mentioned in [Deployment - sizing](#) were fulfilled.
  - b. If all requirements were fulfilled, then contact [CAST Technical Support](#) with the following [Relevant input](#)
3. Check if the error is related to lack of memory in the analysis machine as seen in the analysis log below

```

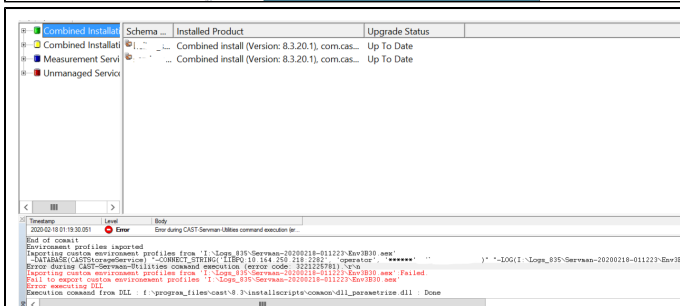
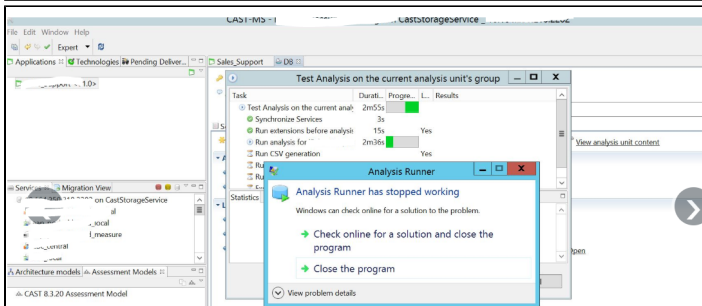
Analysis log file

MemMgrDLL_AllocBlock(): Cannot allocate a new user area of bytes.
A memory allocation call failed while creating a node.
MngTreeDLL_MkTreeElement() - Not enough memory for building a new 'NODE'.

```

- a. Add some memory to the analysis machine.
  - b. [Split](#) the analysis unit
4. Check if the error is due to corruption in the installation of CAST AIP

Run Analysis on the current analysis unit's group			
Task	Durat...	Progre...	L... Results
Run Analysis on the current analysis unit's group	21s		Child task on exception
Synchronize Services	3s		
Application "	22s		Child task on exception
Run extensions before analysis	15s	Yes	
Run analysis for "	7s		Child task on exception
Clean dependency dataset	1s		
Run Universal Analyzer "DB_34835"	6s	Yes	The analysis failed to initialize properly (Error code -1073741515) due to missing dll files.
Compute Analysis Unit full content for DB			
Run metrics calculation for DB			



Looking at the screenshot above we can see that the issue is coming due to missing dll / error executing the dll present in the CAST binaries folder which is due to corruption in the installation. So the solution is to re-install CAST AIP

5. Check if the error is due to a corrupted connection profile in the **CWProfileConnection.ini** file. For more details please refer [CMS Snapshot Analysis - Run Analyzer - Fatal Error - Failed to connect on local database - connection profile may be badly configured](#)
  - a. Verifying the local database name in the analysis may assist with this - see the analysis message 'Using Knowledge Base on Schema xxx' and verify that xxx is the correct local schema
  - b. If not, edit the CWProfileConnection.ini file to remove any duplicated corrupted items, re-sync in CAST-MS, and then verify that the analysis properly runs.
6. If the fatal error is an SQL Error, navigate to the page for [SQL Error](#)
7. If the Fatal Error occurs during the Parsing Step, try to remove the last file parsed before the Fatal Error. If this does not solve the issue, you may iterate this approach 2 or 3 times. If removing the 3 files does not solve the issue, then give up this approach and proceed to the next step.
8. If the Fatal Error occurs during the saving Step with error : **Error executing actions. Error message: Analysis saving could not be finalized**, follow this page: [CMS Snapshot Analysis - Run Analyzer - Fatal Error - Error executing actions Error message Analysis saving could not be finalized](#)
9. Else, check [CMS Snapshot Analysis - Run Analyzer - Fatal Error - Analyzer is running out of memory - This may occur under disk full condition](#)
10. Else, remove all the empty files (file size 0) and files fully commented (there is no line of codes, or all code lines are commented out). Run the analysis again.
11. If the issue still occurs, navigate to the below pages
  - [CMS Snapshot Analysis - Run Analyzer - Fatal Error - SAP Business Objects with Core CAST AIP](#)
  - [CMS Snapshot Analysis - Run Analyzer - Fatal Error - CPP with Core CAST AIP](#)
  - [CMS Snapshot Analysis - Run Analyzer - Fatal Error - IBM DB2 UDB with Core CAST AIP](#)
  - [CMS Snapshot Analysis - Run Analyzer - Fatal Error - DOTNet with Core CAST AIP](#)
  - [CMS Snapshot Analysis - Run Analyzer - Fatal Error - JEE with Core CAST AIP](#)
  - [CMS Snapshot Analysis - Run Analyzer - Fatal Error - Mainframe with Core CAST AIP](#)
  - [CMS Snapshot Analysis - Run Analyzer - Fatal Error - Oracle Forms with Core CAST AIP](#)
  - [CMS Snapshot Analysis - Run Analyzer - Fatal Error - Oracle Server PL SQL with Core CAST AIP](#)
  - [CMS Snapshot Analysis - Run Analyzer - Fatal Error - Power Builder with Core CAST AIP](#)
  - [CMS Snapshot Analysis - Run Analyzer - Fatal Error - SQL Errors](#)
  - [CMS Snapshot Analysis - Run Analyzer - Fatal Error - SQL Server TSQL with Core CAST AIP](#)
  - [CMS Snapshot Analysis - Run Analyzer - Fatal Error - Universal Analyzer](#)
  - [CMS Snapshot Analysis - Run Analyzer - Fatal Error - Visual Basic with Core CAST AIP](#)
  - [CMS Snapshot Analysis - Run Analyzer - Fatal Error - Sybase ASE TSQL with Core CAST AIP](#)
  - [CMS Snapshot Analysis - Run Analyzer - Fatal Error - Analyzer is running out of memory - This may occur under disk full condition](#)
  - [CMS Snapshot Analysis - Run analyzer - Fatal Error - IBM DB2 ZOS with Core CAST AIP](#)
  - [CMS Snapshot Analysis - Run Analyzer - Fatal Error - JEE with Extension](#)
  - [CMS Snapshot Analysis - Run Analyzer - Fatal Error - CPP with Extension](#)
  - [CMS Snapshot Analysis - Run Analyzer - Fatal Error - DOTNet with extension - DotNet Analyzer](#)
  - [CMS Snapshot Analysis - Run Analyzer - Fatal Error - Error executing actions Error message Analysis saving could not be finalized](#)
  - [CMS Snapshot Analysis - Run Analyzer - Fatal Error - Failed to connect on local database - connection profile may be badly configured](#)
12. If you do not find the information you are looking for or solution for your problem, in this page, contact [CAST Technical Support](#) with the following [Relevant input](#)

## Relevant input

- [Enable the memory traces](#) and provide the log file containing the traces.
- The **AMT IN Tables** if the fatal error occurs during the saving step.
- [CAST Support Tool \(CST\) - alias Sherlock](#). Option to select : **Export Logs, Export CAST Database for Management Base only (also Knowledge Base if the fatal error occurs during the saving step), Export Configuration files, Export source code.**
- Screenshot showing the Fatal Error in CAST MS.

## Notes/comments

## Related Pages