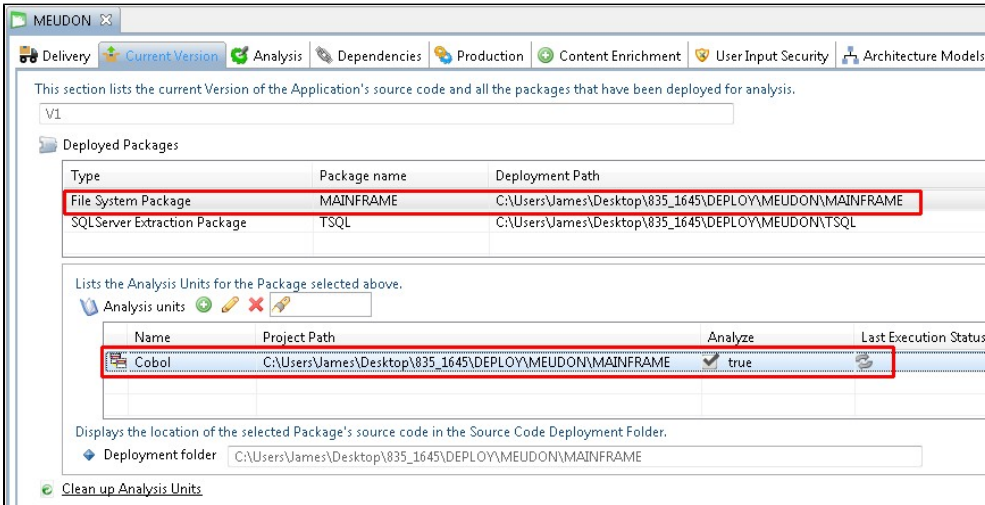
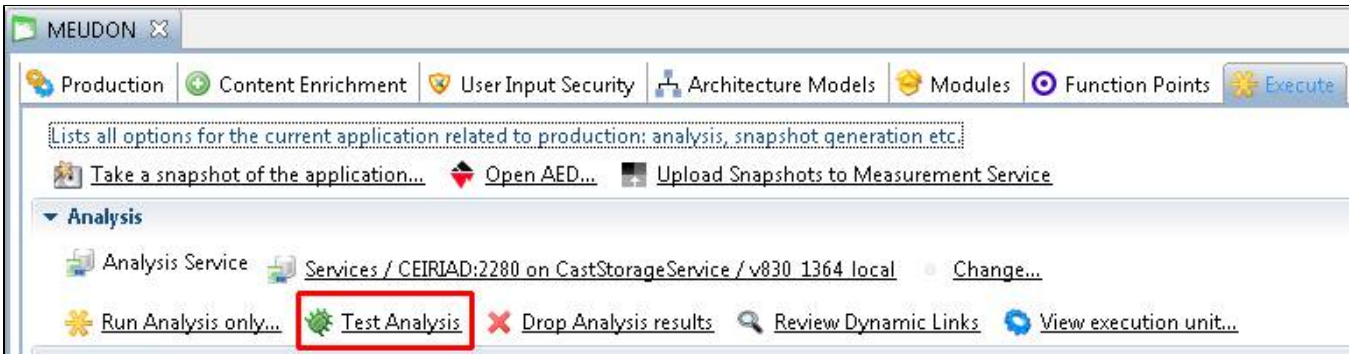


Mainframe - Run and validate analysis

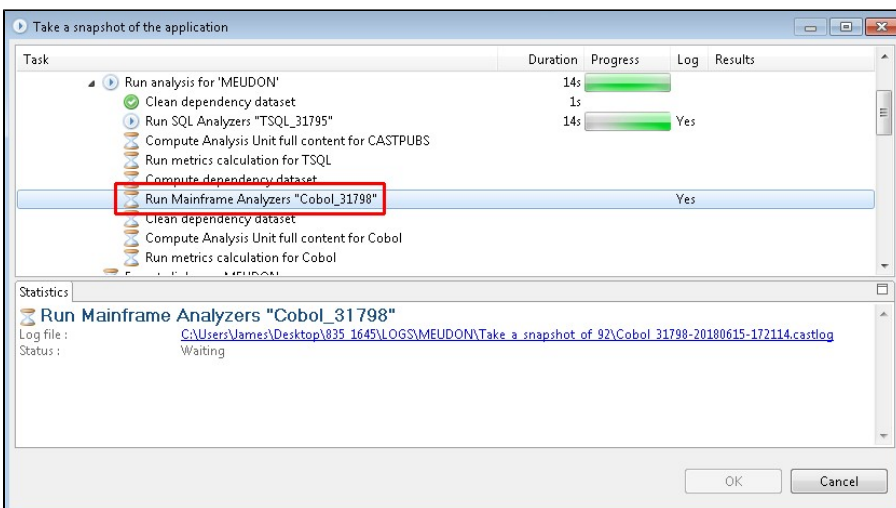
- Accept and deploy the **Version** in the CAST Management Studio. Any projects that were discovered in the CAST Delivery Manager Tool will be transformed into **Analysis Units**:



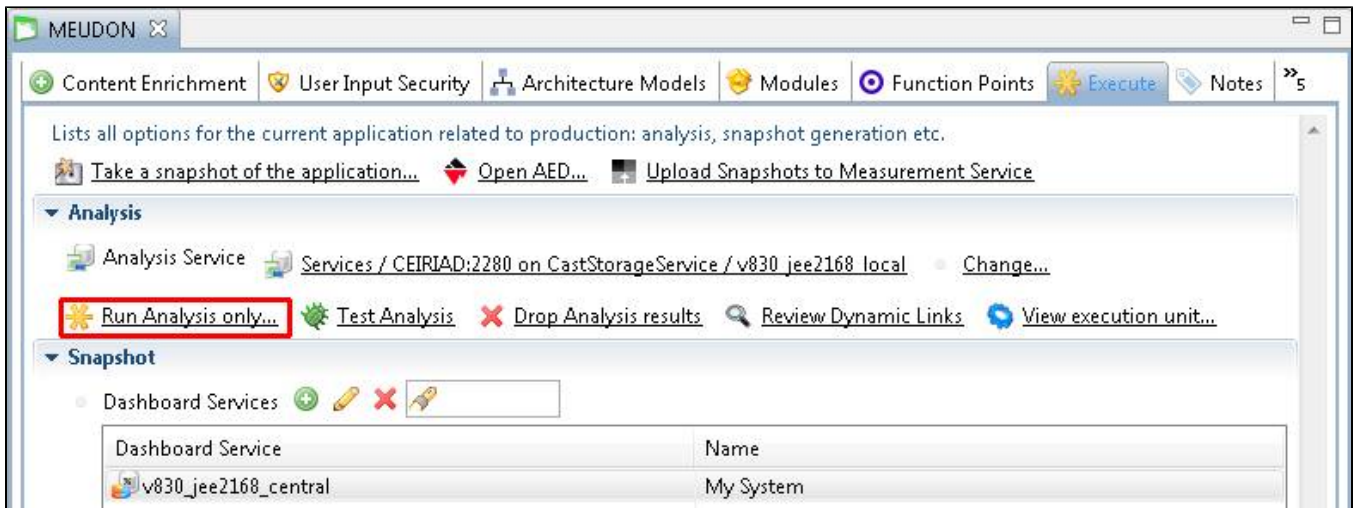
- You should now check and edit (if necessary) the default automated analysis configuration settings that have been set for you during the package deployment. See [Mainframe - Analysis configuration](#).
- When you are satisfied that you have configured your analysis correctly, we suggest that you run a **test analysis** at Application level before you generate a **new snapshot** (no results will be saved to the CAST Analysis Service):



- On completion, you should **check the test analysis log file** and then clear up any warning or error messages that have been returned by reconfiguring the analysis:



- When all issues and problems have been resolved, you can then use the **Run Analysis only** option to perform an analysis AND save the results in the CAST Analysis Service:



- Finally you can check the [analysis results](#) using the CAST dashboards and/or CAST Enlighten.