

Visual Basic - Environment Profiles

- [Introduction](#)
 - [Predefined Environment Profiles](#)
- [Custom Environment Profiles](#)
 - [Managing custom Environment Profiles](#)
 - [Creating a custom profile](#)
 - [Enabling custom Environment Profiles](#)

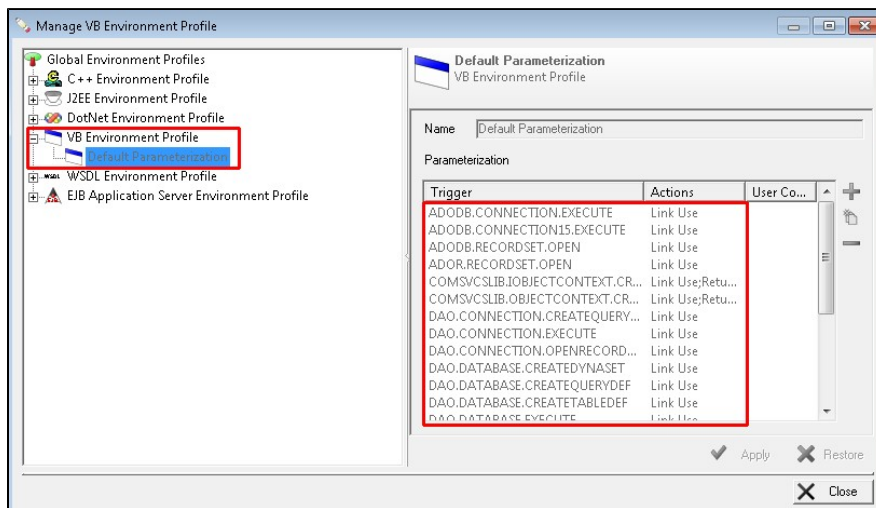
Summary: This section describes the **predefined** Environment Profiles supplied with the CAST AIP and the **custom** Environment Profiles that can be created where required. Environment Profiles can only be managed with the legacy CAST Management Studio.

Introduction

Environment Profiles are a set of predefined (by CAST) or custom configuration settings that can be included in an analysis:

Predefined Environment Profiles

CAST provides **one** predefined Environment Profile for the Visual Basic technology that is applied to an analysis automatically. This predefined Environment Profile provides parametrization support for commonly used Visual Basic methods so that the analyzer can correctly identify links that are created with these methods:



Custom Environment Profiles

A custom Environment Profile can be particularly useful where you have several Analysis Units (for example a large project that has been split) that rely on the same specific settings. By creating a custom Environment Profile that defines these settings, you avoid having to configure each Analysis Unit with the same settings - instead you simply include the custom Environment Profile at **Application** or **Analysis Unit level** using the **Custom Environment Profile** option. When the analysis is run, the settings in the Environment Profile are taken into account.

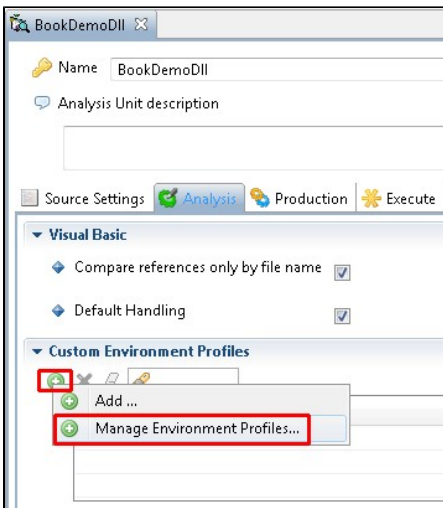
For Visual basic, it is possible to create Environment Profiles as follows:

- Parametrization support for custom Visual Basic methods

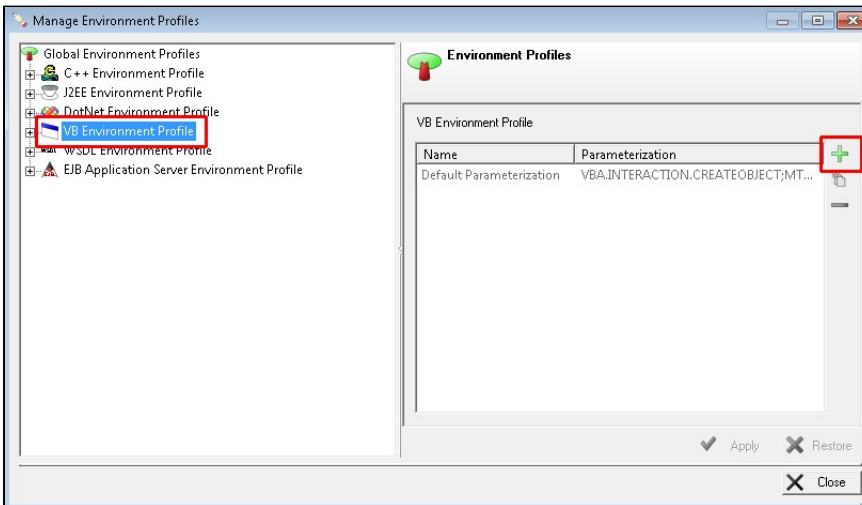
Note that you can apply multiple custom Visual Basic Environment Profiles to an analysis.

Managing custom Environment Profiles

If you want to create new custom Environment Profiles, you need to use the **Environment Profile Manager** in **CAST Management Studio**. This can be accessed from the **Analysis tab** in the Application or Analysis Unit:




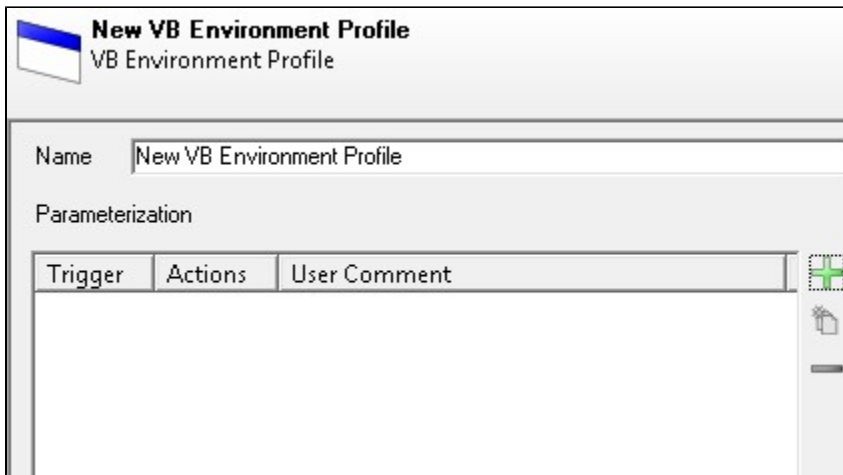
The **Profile Manager** will then launch:



- The **left hand** section displays a collapsible list of any Predefined or existing Custom Environment Profiles listed by technology, then by profile name. If this the first time you have used the Environment Profile dialog box, then this section will only contain the CAST AIP predefined profiles - they will be grayed out. If you have already created profiles then you can expand the list and select the profile you want to modify or delete.
- The **right hand** section provides the means to define new profiles and get access to existing profiles for modification and deletion purposes.

Creating a custom profile





After clicking the  icon next to **VB Environment Profile**, a new screen will be displayed enabling you to **define a name** for the Environment Profile and **add the custom methods** you require for parametrization:



- Enter a **name** for the Environment Profile. Choose a name that is easily recognizable as this name will be displayed in the left hand collapsible list and will be used when you add the Environment Profile at Application or Analysis Unit level.
- You then need to define your custom method rules and the action that the analyzer needs to undertake when the method in question is encountered during an analysis.

The parametrization process is complex and as such a much more detailed explanation of the configuration process can be found in the **CAST Management Studio product help**.

Briefly:

- Click the  icon to create a new parametrization rule - the **Add/Edit Rule dialog box** will be displayed.
- You can add as many Methods as you want (click the  icon again).
- You can use the  button to make an identical copy of a selected Method
- You can use the  button to remove a selected Method an its parameterization

To apply the settings, make sure you click the **Apply** button. If you want to clear the entire window and revert to the default settings, click the **Restore** button.

Enabling custom Environment Profiles

Use the following options in the **Analysis tab** at **Application/Analysis Unit level** to select a custom Environment Profile you have created (*click to enlarge*):

