


ACH - Using the Action menu options to automatically create layers

 Starting from CAST AIP 8.3.23, **CAST Architecture Checker** will no longer be installed as part of the CAST AIP setup, whether installing CAST AIP from scratch or on a server where a previous release of CAST AIP exists. CAST Architecture Checker has evolved into a **standalone component** where all feature requests and bug fixes are now managed. This standalone component can be downloaded from **CAST Extend** (<https://extendng.castsoftware.com/#/search-results?q=archichecker>).

Up-to-date documentation can be found here: [CAST Architecture Checker](#).

Using the Action menu options to automatically create layers

When creating Layers, you can use various **automatic** layer creation options available in the **Action menu**:

Modules

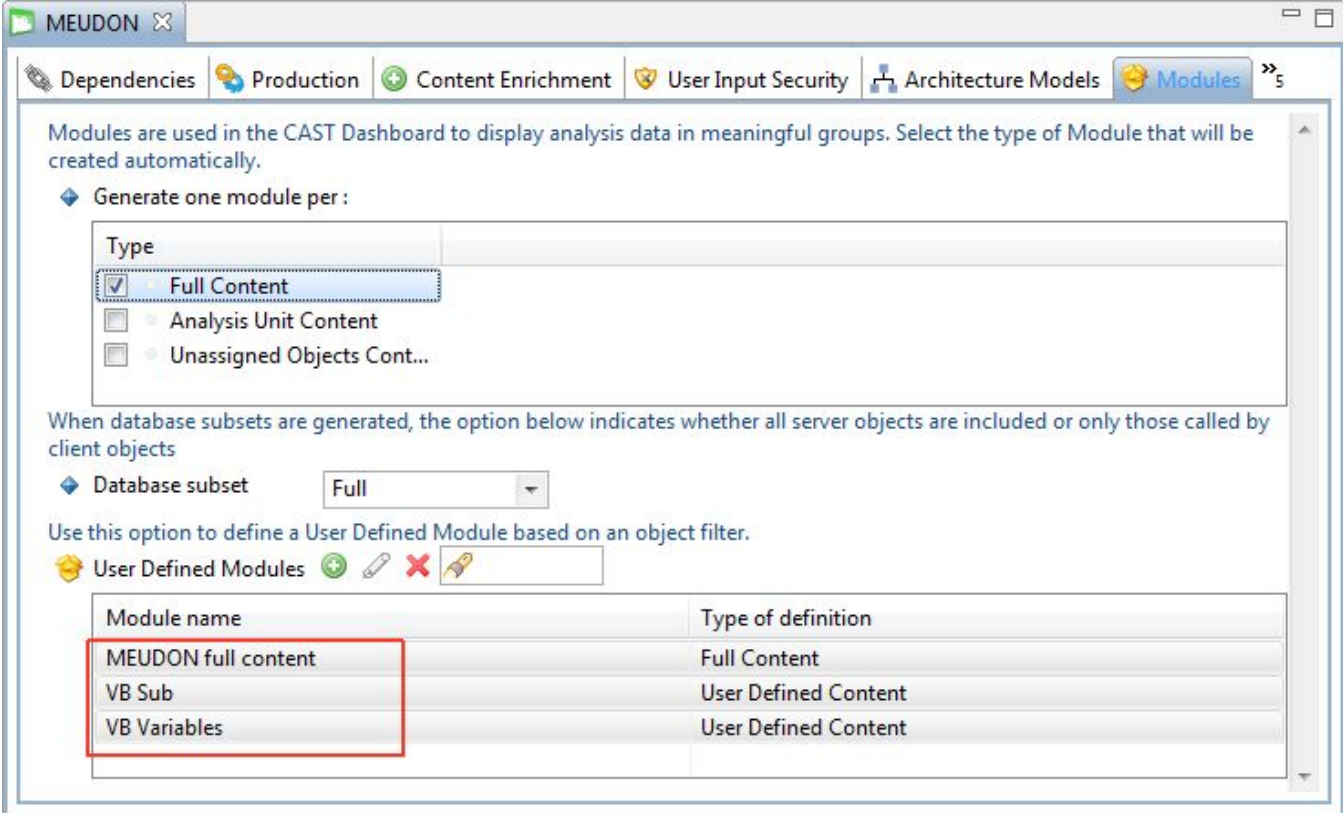
- [Create layers from User Defined Module selection](#)
- [Create all layers based on application User Defined Modules](#)

Analysis Units

- [Create layers from Analysis Unit selection](#)
- [Create all layers based on application Analysis Units](#)

Create layers from User Defined Module selection

This option is available in the **Action menu** located on the toolbar. It allows you to create a layer for **each Module** that belongs to the currently selected Application. All Modules (whether automatically or manually defined) listed in the **Module tab** of the **Application editor** in the CAST Management Studio can be selected as the basis for the layer:



MEUDON

Dependencies Production Content Enrichment User Input Security Architecture Models Modules

Modules are used in the CAST Dashboard to display analysis data in meaningful groups. Select the type of Module that will be created automatically.

Generate one module per :

| Type |
|---|
| <input checked="" type="checkbox"/> Full Content |
| <input type="checkbox"/> Analysis Unit Content |
| <input type="checkbox"/> Unassigned Objects Cont... |

When database subsets are generated, the option below indicates whether all server objects are included or only those called by client objects

Database subset: Full

Use this option to define a User Defined Module based on an object filter.

User Defined Modules

| Module name | Type of definition |
|---------------------|----------------------|
| MEUDON full content | Full Content |
| VB Sub | User Defined Content |
| VB Variables | User Defined Content |

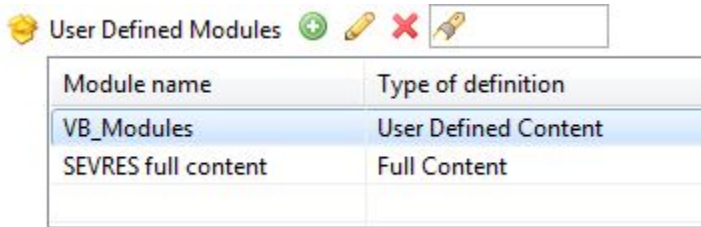
The resulting layer will contain a filter definition that matches the filter definition for the Module - in other words the objects assigned to the Module will also be assigned to the Layer.

Online/offline

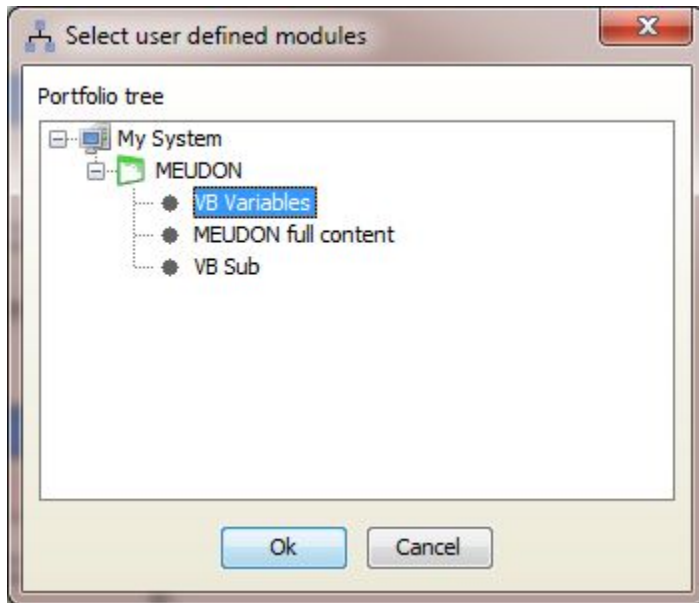
To use this option, you need to be [working online](#). If you are not already working online and you select the option in the [Action menu](#), the CAST Architecture Checker will display the **CAST Connection dialog box** as described in [Connect and select application](#) enabling you to connect to a Management Service.

Example

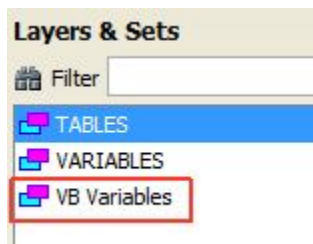
In the following example, an "automatic" Module strategy is in place for the current Application meaning that a "Full Content" Module (i.e. all objects resulting from the analysis) will have been created during the snapshot generation process. There is also an additional "manually" created User Defined Module containing specific objects:



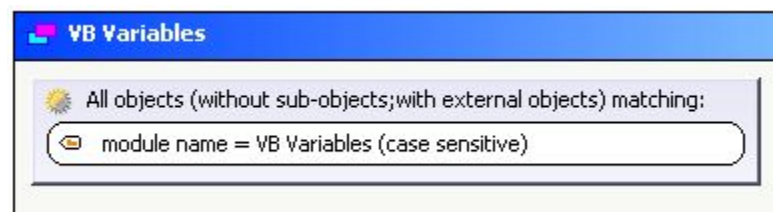
When running the **Create layers from User Defined Module selection** option, you will be prompted to select the Module you want to create a Layer from. Select the required Module and then click OK:



A layer will then be created and displayed in the [Layers and Sets window](#):



Dragging the layer to the [Main window](#), we can see how it is constructed:



Note that:

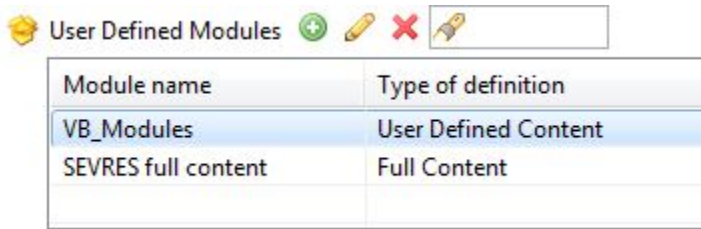
- You must generate a snapshot before using this option.
- User Defined Modules created after the most recent snapshot generation will not be available for selection - you must generate a snapshot to include the User Defined Modules first.
- You can **manually** create layers based on Modules by using the **Module Name** option in the [Types and Properties window](#) - this is primarily of use when you are working "**offline**".

Create all layers based on application User Defined Modules

This option is very similar to the above **Create layers from User Defined Module selection** option. However, instead of giving you the option of choosing the Module you want to use as the basis for the Layer, all Modules (whether automatically or manually defined) listed in the **Module tab** of the **Application editor** in the CAST Management Studio will cause the automatic creation of a corresponding layer.

Example

In the following example, an "automatic" Module strategy is in place for the current Application meaning that a "Full Content" Module (i.e. all objects resulting from the analysis) will have been created during the snapshot generation process. There is also an additional "manually" created User Defined Module containing specific objects:



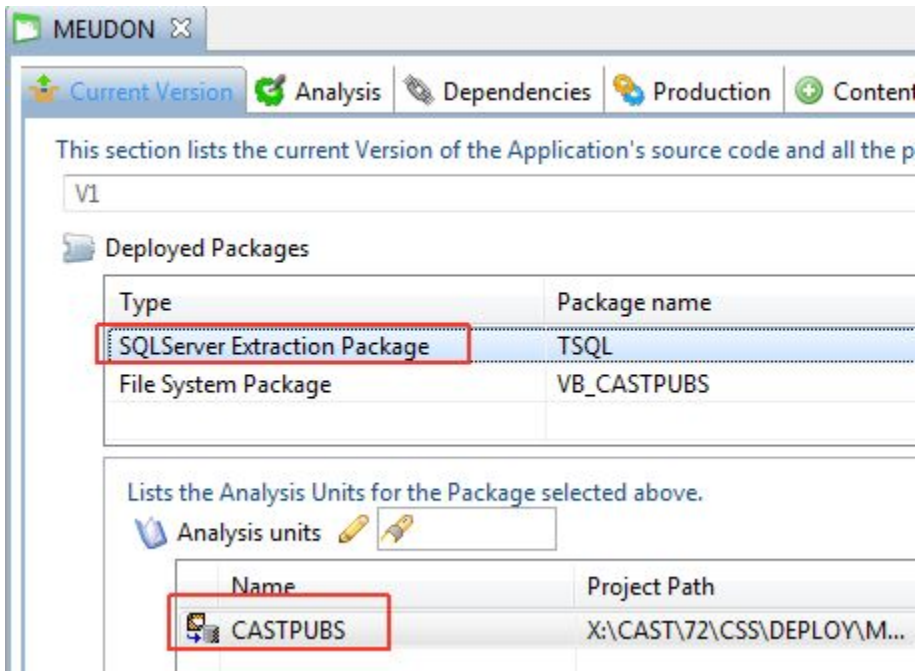
| Module name | Type of definition |
|---------------------|----------------------|
| VB_Modules | User Defined Content |
| SEVRES full content | Full Content |

When running the **Create all layers from modules** option, two corresponding layers will be automatically created and displayed in the [Layers and Sets window](#):



Create layers from Analysis Unit selection

This option is available in the [Action menu](#) located on the toolbar. It allows you to create a layer for **the selected Analysis Unit** in the currently selected Application. All Analysis Units in the current Application (listed in the **Current Version tab** of the **Application editor** in the CAST Management Studio) can be selected as the basis for the layer:



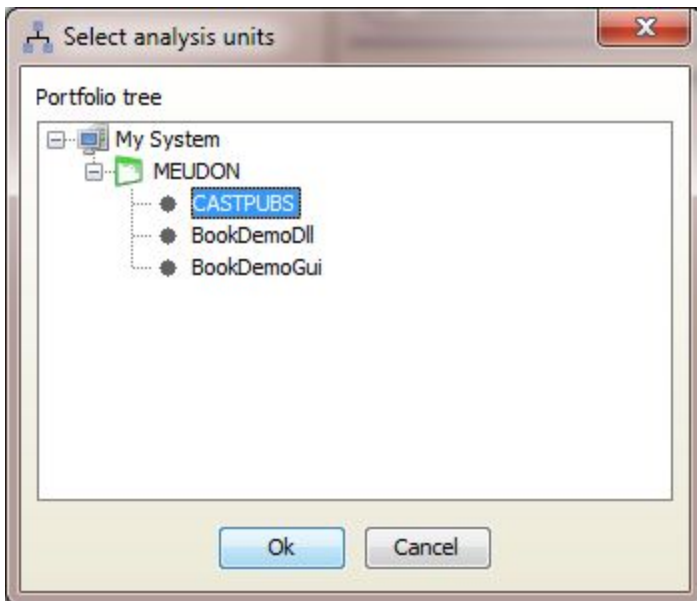
The resulting layer will contain a filter definition that matches the all the objects assigned to the Analysis Unit.

Online/offline

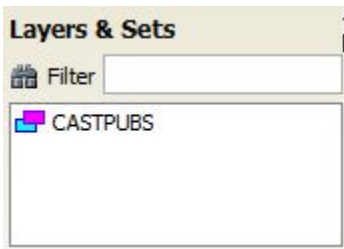
To use this option, you need to be [working online](#). If you are not already working online and you select the option in the [Action menu](#), the CAST Architecture Checker will display the **CAST Connection dialog box** as described in [Connect and select application](#) enabling you to connect to a Management Service.

Example

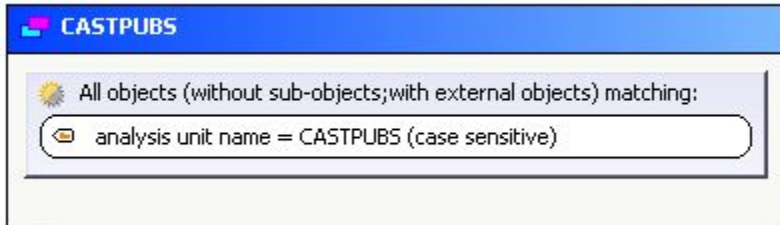
In the following example, we have chosen to create a layer for the CASTPUBS Analysis Unit. When running the **Create layers from Analysis Unit selection** option, you will be prompted to select the Analysis Unit you want to create a Layer from. Select the required Analysis Unit and then click OK:



A layer will be created and displayed in the [Layers and Sets window](#):



Dragging the layer to the [Main window](#), we can see how the layer is constructed:



You can manually create layers based on Analysis Units by using the **Analysis Unit Name** option in the [Types and Properties window](#) - this is primarily of use when you are working "**offline**".

Note that:

- you must generate a snapshot before using this option.
- you can manually create layers based on Analysis Units by using the **Analysis Unit Name** option in the [Types and Properties window](#) - this is primarily of use when you are working "**offline**".

Create all layers based on application Analysis Units

This option is very similar to the above **Create layers from Analysis Unit selection** option. However, instead of giving you the option of choosing the Analysis Unit you want to use as the basis for the Layer, all Analysis Units that belong to the current **Application** in the CAST Management Studio will cause the automatic creation of a corresponding layer.

Example

In the following example, we have three Analysis Units in the current Application:

- 1 Analysis Unit for the T-SQL analysis
- 2 Analysis Units for the VB analysis

When running the **Create all layers based on application Analysis Units** option, three corresponding layers will be automatically created and displayed in the [Layers and Sets window](#):

