

# ACH - Check content



Starting from CAST AIP 8.3.23, **CAST Architecture Checker** will no longer be installed as part of the CAST AIP setup, whether installing CAST AIP from scratch or on a server where a previous release of CAST AIP exists. CAST Architecture Checker has evolved into a **standalone component** where all feature requests and bug fixes are now managed. This standalone component can be downloaded from **CAST Extend** (<https://extending.castsoftware.com/#/search-results?q=archchecker>).

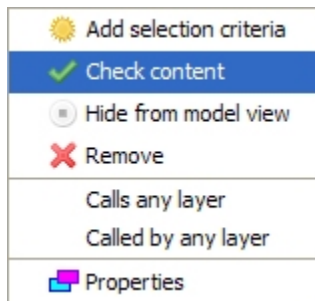
Up-to-date documentation can be found here: [CAST Architecture Checker](#).

## Check content

When [working online](#), you can use this option to display the objects resulting from your analyses (as stored in the CAST Analysis Service) that match the selection criteria you have defined for the current layer. This option is similar to [Check all layers](#), however that option also gives you the chance to verify the source code of the objects that match your criteria.

The option can be accessed:

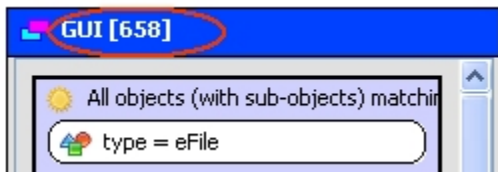
- By **right clicking** the layer or set and selecting **Check content**



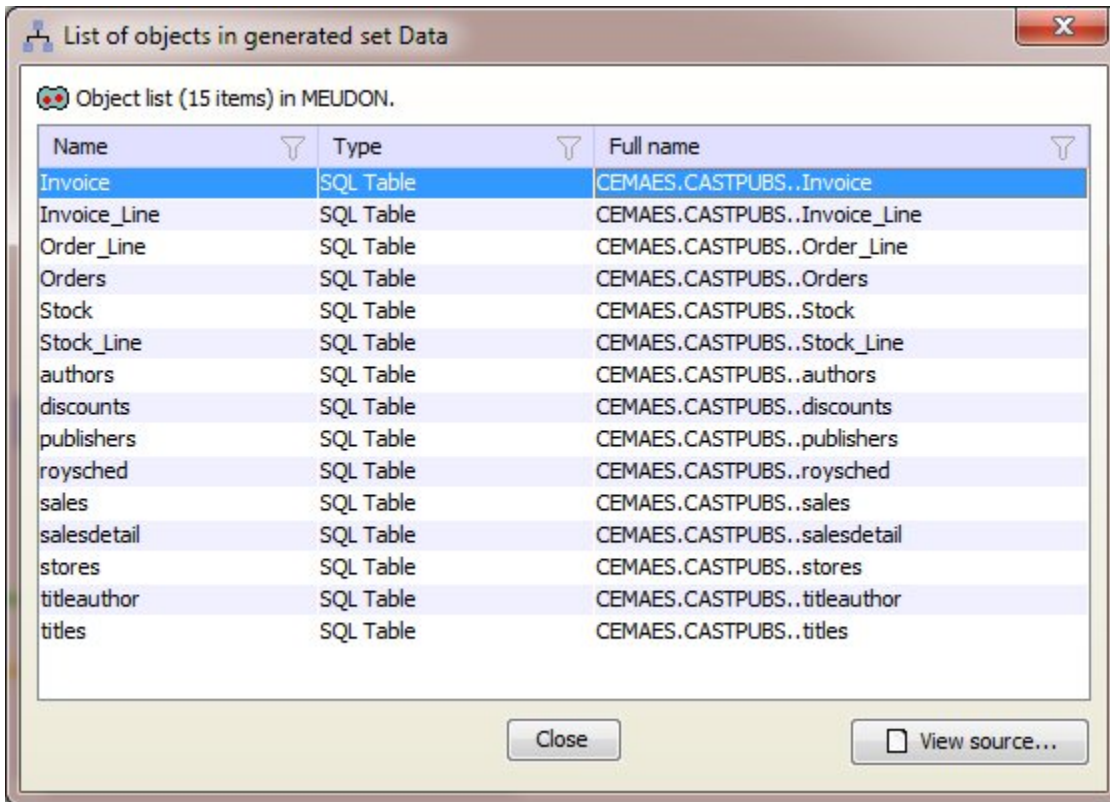
When selected, the CAST Architecture Checker will query the CAST Analysis Service (via the current connection to the CAST Management Service) and return all matching objects for your layer or set.

Results are displayed in two ways:

- with a numerical indication in the title bar of your layers and sets. This number refers to the number of objects that exactly match the selection criteria defined for your layer or set:



- with a detailed display of the matching objects:



An explanation of each option is listed below:

<b>Column headings</b>	<b>Name</b>	Object's short name as saved in the CAST Analysis Service
	<b>Type</b>	Object type as defined by CAST's meta-model.
	<b>Full Name</b>	Object's full name as saved in the CAST Analysis Service
<b>View source</b>	<p>Use this option to view the source code of the selected object as stored in the CAST Analysis Service. The source code will be displayed in the <b>Source Code tab</b> (see <a href="#">Main window</a> for more information).</p> <p><b>Notes</b></p> <ul style="list-style-type: none"> <li>- This option is only visible if you select a violation.</li> <li>- This option relies on the CAST Management Studio option <b>Always upload Source Code for viewing in CAST Dashboard</b> being set to <b>true</b> (this is the default position).</li> <li>- Some items listed are in fact folder items or maybe part of a compiled JAR file (for example), and as such their source code is not visible.</li> </ul>	

### View source code


If you would like to see the source code that forms an object please see [View source code](#).

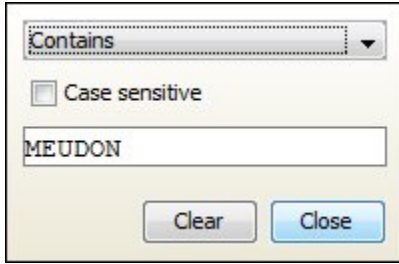
### Dialog box hints

The following hints pertain to the List of objects dialog box displayed when you use the **Check content** option.

- The **List of Objects dialog box** (displayed when the **Check content** option is actioned) is non-modal, in other words, when displayed, it does not block you from continuing to work on your Architecture Model. This is useful if you want to check the contents of other Layers or Sets in your Architecture Model - the results displayed in the dialog box will update when you action the **Check content** option on a different Layer or Set.
- You can drag and drop one or multiple objects listed in the dialog box direct into an existing Layer or Set. Doing so will cause the creation of a criteria that will match the selected objects based on their full name.
- If the dialog box is left open when the Management Service connection or the selected Application changes, the **View source** button in the dialog box will cease to function

### Column filtering

You can also use the Filter icon  in each column heading to sort and filter according to content:



A screenshot of a filter dialog box. At the top, there is a dropdown menu with the word "Contains" selected. Below the dropdown is a checkbox labeled "Case sensitive" which is currently unchecked. Underneath the checkbox is a text input field containing the word "MEUDON". At the bottom of the dialog, there are two buttons: "Clear" and "Close".

- Choose the filter type in the drop down list
- Choose whether the criteria will be applied using case sensitive text or not.
- Enter the filter text.

Only content that matches the chosen criteria will be displayed.

**Notes**

Note that you can use the [Check all layers](#) option to check the matching objects for all layers and sets.

If you are not [working online](#), you will be prompted to [connect](#).