


Install CAST Extend local server

- [Download the installation media](#)
- [Run the installation](#)
 - [Interactive setup](#)
 - [Silent installation](#)
- [What is installed?](#)
 - [Files](#)
 - [Windows Services](#)
 - [Running executables](#)
 - [Installed third-party software](#)
- [Initial post install setup](#)
- [Configuring AIP Console to use CAST Extend local server](#)
 - [Configuration during initial start-up wizard \(new installations\)](#)
 - [Configuration in System Settings \(existing upgraded installations\)](#)
- [Updating the available extensions in CAST Extend local server](#)
- [Proxy configuration](#)

 **Summary:** step-by-step instructions for installing **CAST Extend local server**.

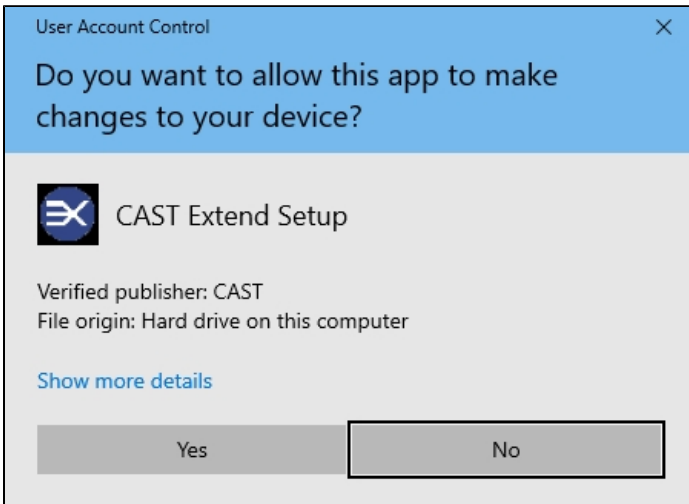
Download the installation media

Download the latest release of CAST Extend Offline from <https://extend.castsoftware.com/#/extension?id=com.castsoftware.aip.extendproxy&version=latest>.

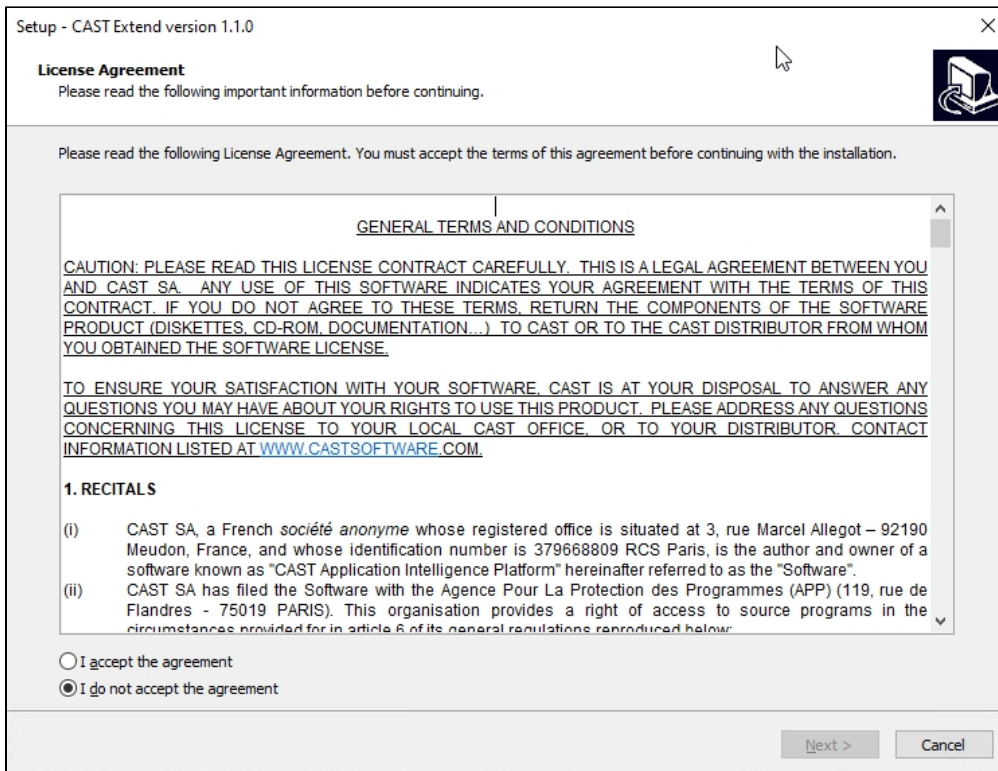
Run the installation

Interactive setup

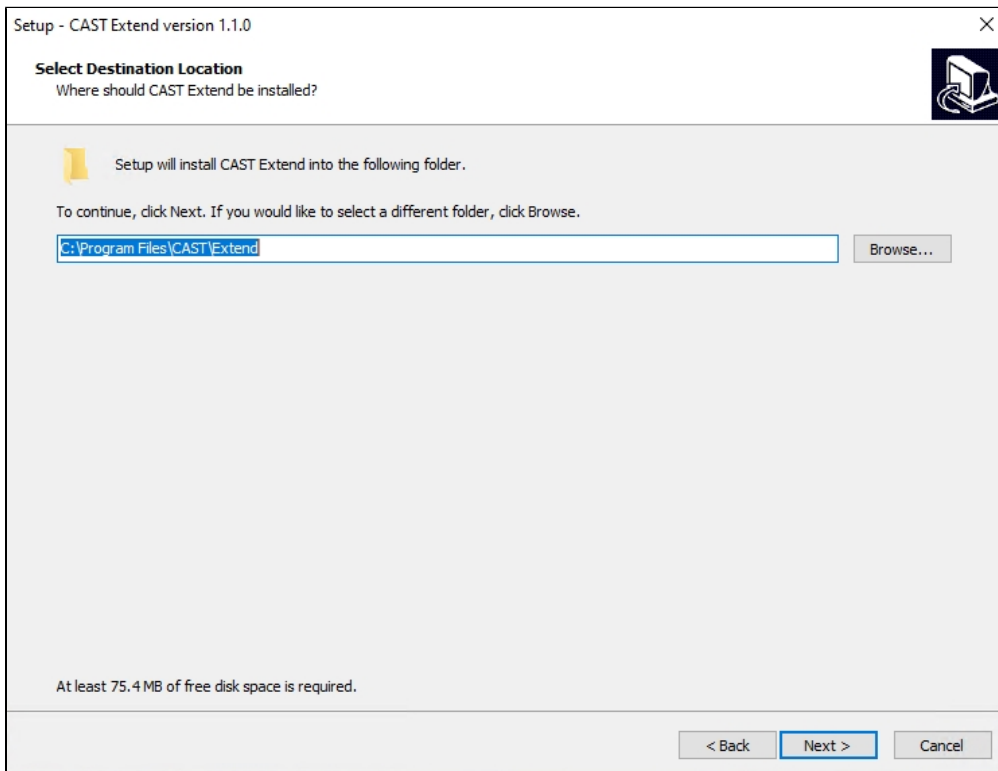
Double click the **executable** file as provided with the installation media. You may be prompted to allow the installation - click **Yes**:



The installation wizard will be displayed. Read and accept the license agreement and click **Next**:



Choose a location on the local machine that will be used for the installation. The setup will suggest: %PROGRAMFILES%\CAST\Extend, but you are free to choose a different location. Click **Next** to continue:



Fill in the required information. Note that Server name and Server port will form the **CAST Extend local server URL** that needs to be configured in AIP Console or in Extension Downloader:

Setup - CAST Extend version 1.1.0

Server Information
Give the following information in order to set the Extend parameters

This information will be used to define your server URL with format:
http://my_server_hostname:my_port

Server hostname:
WIN10TEST

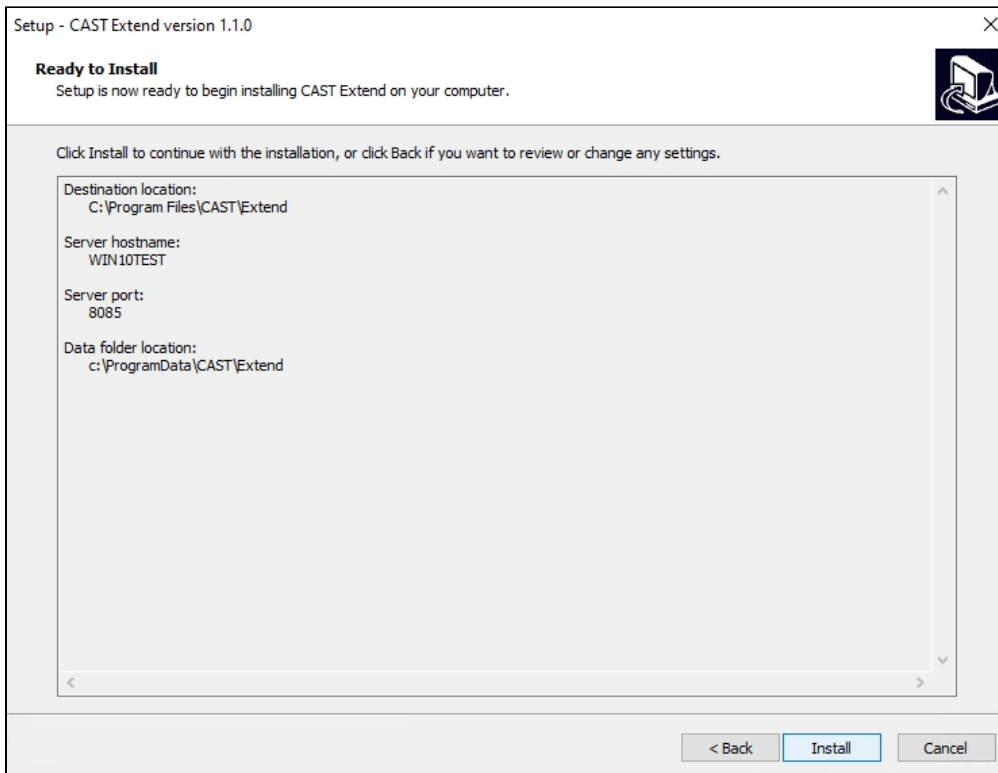
Server port (range 0-65535):
8085

Data folder location:
c:\ProgramData\CAST\Extend

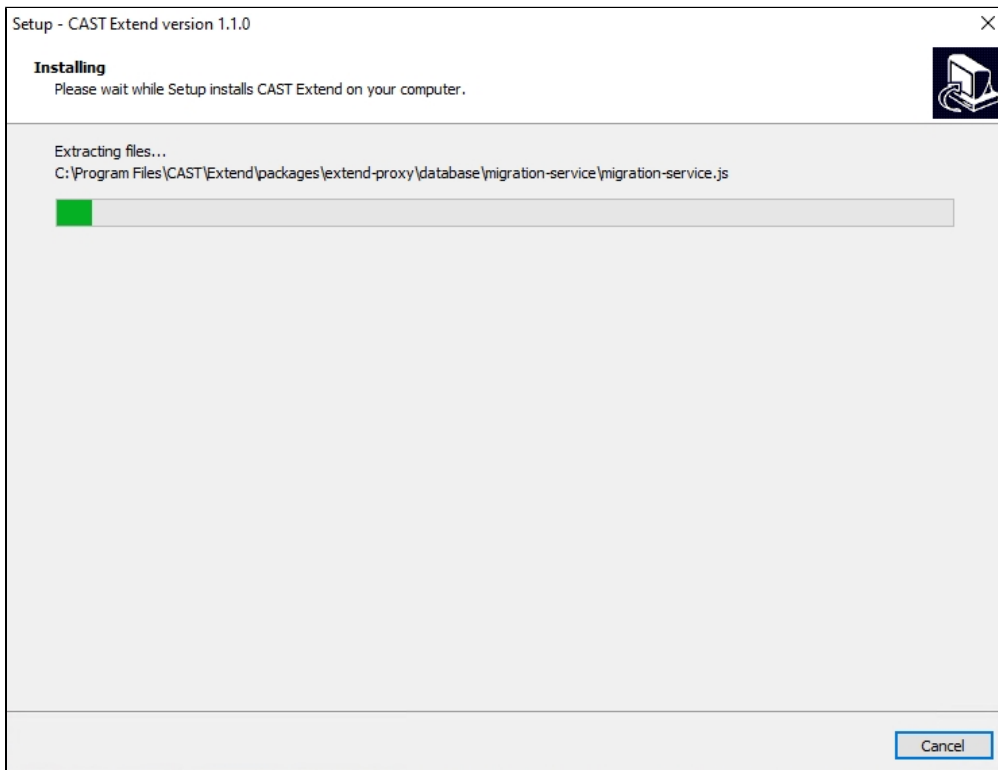
< Back Next > Cancel

Server hostname	The setup will use the server's hostname as defined in Windows.
Server port	The setup will use port 8085 by default. If you have another service running on this port, you are free to choose a different port number. Note that CAST Extend Offline also uses this port number by default, therefore if you already have CAST Extend Offline installed, please ensure you are not using the same port, or uninstall CAST Extend Offline.
Data folder location	Choose a location to store the CAST Extend local server data - i.e. the extensions that have been downloaded automatically or manually uploaded. The setup will suggest: %PROGRAMDATA%\CAST\Extend .

A brief summary of the chosen options will be displayed. The installation will start when you click **Install**:



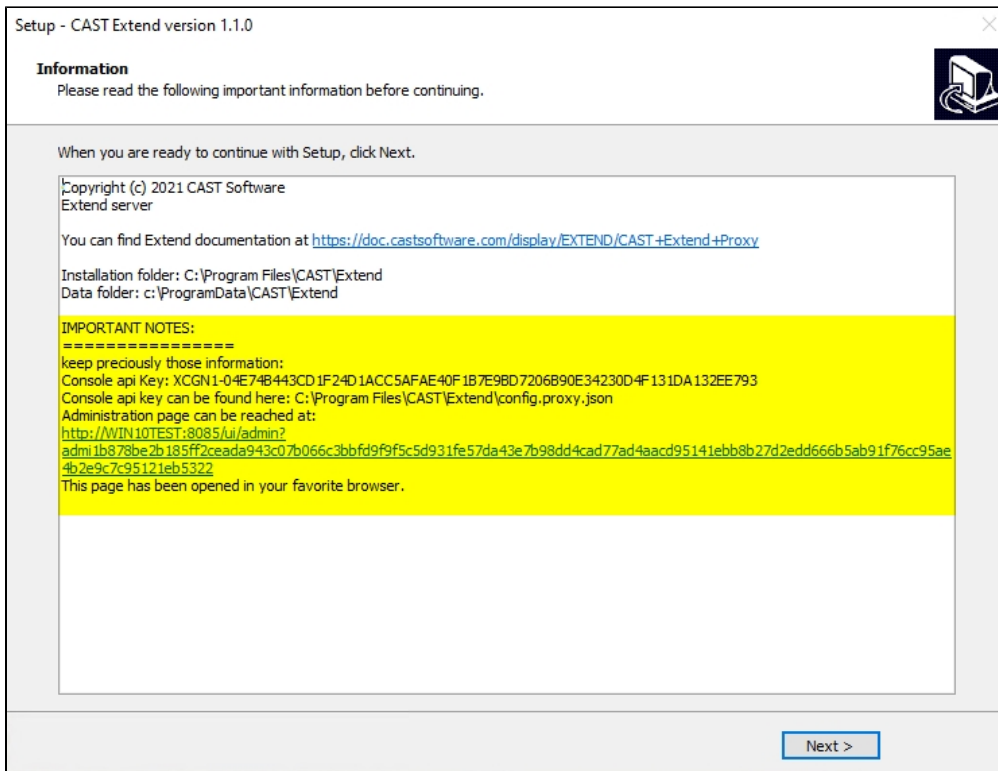
The installation will proceed:



A summary screen will be displayed. Please take note of the:

- **API key** - this will be required when configuring AIP Console to use CAST Extend local server.
- The **CAST Extend local server Administration Center URL** - this will be opened in your default browser and allows you to manage the instance - see [Manage CAST Extend local server via Administration Center](#).

Click **Next** to terminate the installation process:



Silent installation

If you would prefer to run a silent installation, please use the following command line:

```
com.castsoftware.aip.extendproxy.<version>.exe /SP- /VERYSILENT /SUPPRESSMSGBOXES /LOG="filename.log" /LOADINF="filename.inf"
```

/SILENT	Instructs Setup to be totally silent. When Setup is totally silent the wizard, the background window and the installation progress window are not displayed. Everything else is normal, so for example error messages during installation are displayed. If you do want the progress window to be displayed, use /SILENT instead.
/LOG="filename.log"	Allows you to specify a fixed path/filename to use for the log file, for example install.log . If a file with the specified name already exists it will be overwritten. If the file cannot be created, Setup will abort with an error message.

/LOADINF="filename.inf"

Instructs Setup to load the settings from the specified file after having checked the command line, for example **install.inf**. The file should be defined before running the installation, with the following syntax:

```
[Setup]
Lang=english
Dir=C:\Program Files\CAST\Extend
Group=CAST Extend
NoIcons=0
Tasks=
ServerName=my_server_hostname
ServerPort=my_port_number
ExtendMail=my_extend_email
ExtendPassword=my_extend_password
DataDir=C:\ProgramData\CAST\Extend
```

Modify **Dir**, **ServerName**, **ServerPort**, **ExtendMail** and **ExtendPassword** to the required values, for example:

- **Dir=** the path to the installation location. CAST recommends installing to **C:\Program Files\CAST\Extend**, but you are free to change this to another location if necessary.
- **ServerName=** the host name of the server on which you are installing the service
- **ServerPort=** the port number on which the service will run. CAST recommends using **8085**, but you are free to change this if necessary.
- **ExtendMail=** enter your CAST Extend login email address
- **ExtendPassword=** enter your CAST Extend password corresponding to the login you entered for ExtendMail=



Note that the Microsoft Windows UAC prompt will be displayed regardless. It is not possible to suppress this.

What is installed?

Files

On completion of the installation, all files related to **CAST Extend** are stored in:

```
%PROGRAMFILES%\CAST\Extend
%PROGRAMDATA%\CAST\Extend
```

Windows Services

The following Windows Services will be created:

Windows Service name	Description	Listening Port	Auto start?	Notes
CAST_ExtendProxy	CAST Extend local server service	8085 (default)		You may need to adjust firewall rules on the server to allow incoming connections on the listening port.

Running executables

CAST Extend local server runs under the following executables:

```
%PROGRAMFILES%\CAST\Extend\tools\nssm.exe
%PROGRAMFILES%\CAST\Extend\nodeJS\node.exe
```

Installed third-party software

The following table lists all third-party software that is shipped and installed with **CAST Extend local server**:

Software	Version
----------	---------

Node.js

10.15.3

Initial post install setup

When **CAST Extend local server** has been installed, browse to the **admin URL** provided in the last screen of the setup installer, preferably from a different machine on your local network. You can find out more about accessing the Administration Center in [Manage CAST Extend local server via Administration Center](#). For example, change **server_name** and **port** to match your installation:

```
http://<server>:<port>/ui/admin?<unique_guid>
```

If CAST Extend local server is functioning, the Administration Center will be displayed. You should now make some initial choices about how CAST Extend local server functions - see [Manage CAST Extend local server via Administration Center](#) for an explanation of the available options:

EXTEND HUB SETTINGS

GENERAL

UPDATES

Offline: Configure Extend Proxy with no external connection to CAST Extend. Extend Proxy is delivered "empty" and therefore any extensions required for analysis must be uploaded manually.

Online: Configure Extend Proxy as a local intermediary to CAST Extend. An external connection to <https://extend.castsoftware.com> (port 443) is required. Any extensions not already present in Extend Proxy and which are required for analysis will be downloaded direct from CAST Extend automatically.

Extend Account Email

Extend Account Password

Maintenance Valid until: N/A
Extend Credentials have not been set

No HTTP/S Proxy Server

Proxy Server Url


SAVE

Configuring AIP Console to use CAST Extend local server

To use CAST Extend local server in AIP Console there are two methods, available in **AIP Console 1.21.0-funcrel**:

Configuration during initial start-up wizard (new installations)

During the initial [start-up wizard](#), an option will be available in **Step 4: Connect to CAST Extend**:



Connect to CAST Extend

AIP Console requires access to CAST Extend to find and configure extensions for your application analysis. Please enter your CAST Extend information below.

Extend official service Extend offline service Extend proxy

CAST Extend URL*

API key*

Allow CAST to automatically collect anonymous statistical data

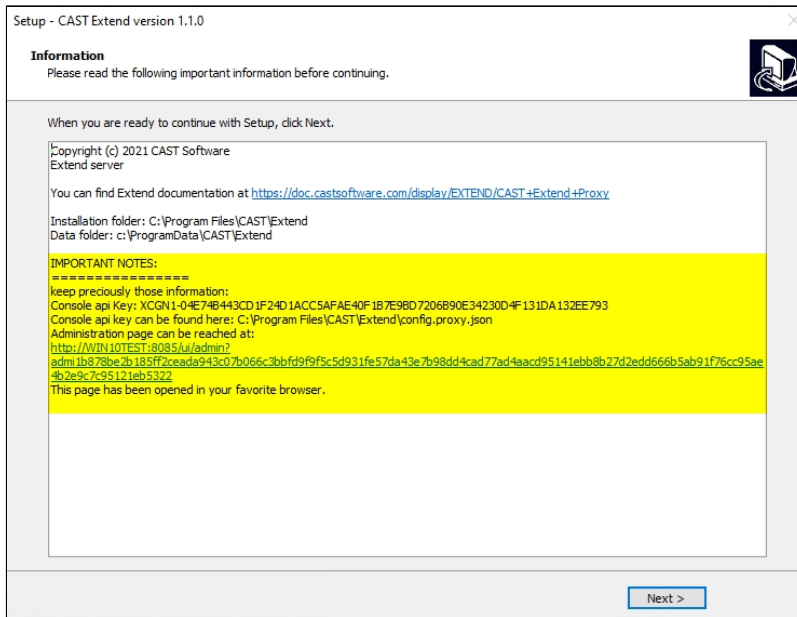
If you don't have a CAST Extend account, you can register here: [CAST EXTEND REGISTRATION](#)

The required information is as follows:

CAST Extend URL	<p>Enter the URL of your on-premises deployment of CAST Extend local server. This will take the form:</p> <div><input type="text" value="http://server:port"/></div> <p>By default CAST Extend local server runs on port 8085.</p>
------------------------	--

API key

Enter your CAST Extend local server API key. This will have been generated during the **installation** of CAST Extend local server and is displayed in the final summary screen of the installer:



Alternatively you can find the API key in the following location on the server on which CAST Extend local server is installed:

```
%PROGRAMFILES%\CAST\Extend\config.proxy.json
```

The key is located on the line **APIKEY**:

```
{
  "PORT": 8085,
  "STORAGE_DIR": "c:/ProgramData/CAST/Extend",
  "PACKAGE_DIR": null,
  "LOG_DIR": "C:/Program Files/CAST/Extend/logs",
  "PUBLIC_URL": "http://WIN10TEST:8085/",
  "EXTEND_URL": "https://extend.castsoftware.com",
  "APIKEY": "<api_key>",
  "ADMI":
  "admi1b878be2b185ff2ceada943c07b066c3bbfd9f9f5c5d931fe57da43e7b98dd4cad77ad4aacd95141ebb8b27d2edd666b5ab91f76cc95ae4b2e9c7c95121eb5322",
  "SYNC_TYPE": "auto"
}
```

Configuration in System Settings (existing upgraded installations)

If you are currently using CAST Extend (live) or CAST Extend Offline, you can switch to CAST Extend local server using the **CAST Extend - System Settings** in the **Administration Center**. The same settings are required as explained above for the **initial startup-wizard**:

CAST Extend

Server Settings

Extend official service Extend proxy Extend offline service

CAST Extend URL*

API key*

Allow CAST to automatically collect anonymous statistical data

SAVE

Updating the available extensions in CAST Extend local server

CAST Extend local server is provided empty but will be automatically populated when an extension is requested by AIP Console/Extension Downloader. It is also possible to update the content manually - see [Update CAST Extend local server with new content](#).

Proxy configuration

If the AIP Node/Server accessing CAST Extend local server is configured to pass all outgoing connections through a **proxy** (via the Windows proxy settings or via the AIP Console settings), then you may need to **whitelist** the IP address/host name of the server running CAST Extend Offline in order to route connections correctly.