



# CAST Architecture Checker - Installation process

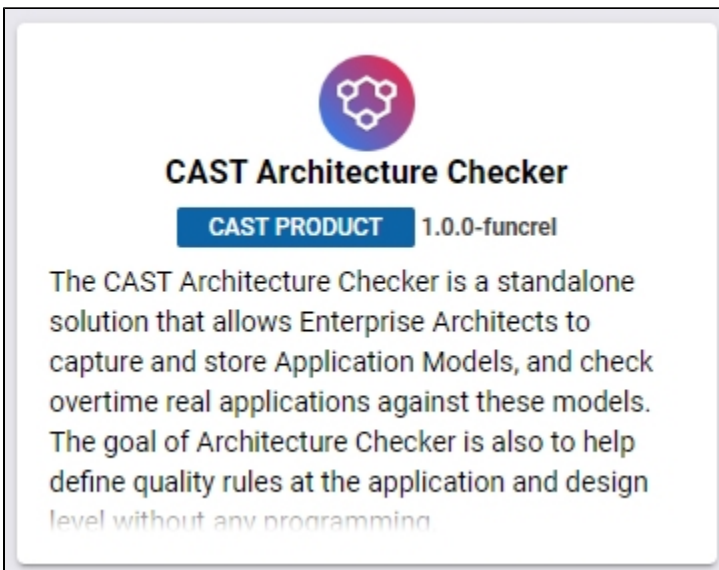
- [Get the installation media](#)
- [Installation process](#)
- [What is installed?](#)
  - [Installation files](#)
  - [Connection profiles](#)
  - [Apps entry point](#)
- [Next steps?](#)

 **Summary:** step-by-step instructions for your **CAST Architecture Checker** installation.

 CAST does not support the upgrade of CAST Architecture Checker from any previous release. Therefore, CAST recommends [uninstalling](#) the previous release of CAST Architecture Checker and then [installing](#) the new release from scratch.

## Get the installation media

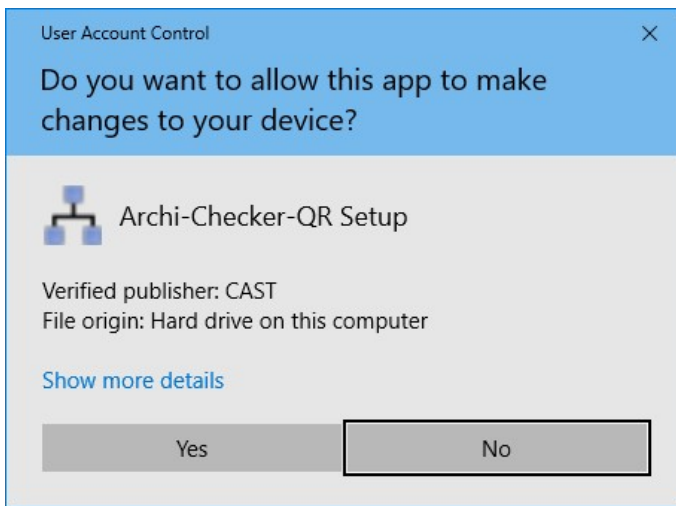
You can obtain CAST Architecture Checker from [CAST Extend](#):



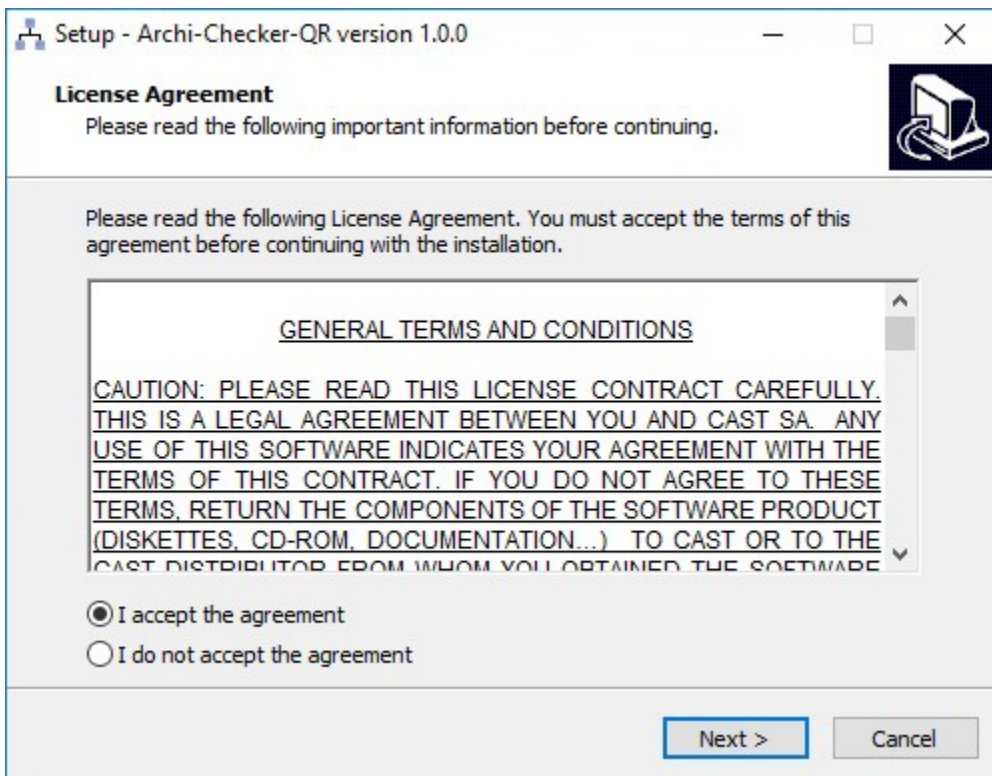
A ZIP file will be downloaded - unpack this ZIP file and proceed as described below.

## Installation process

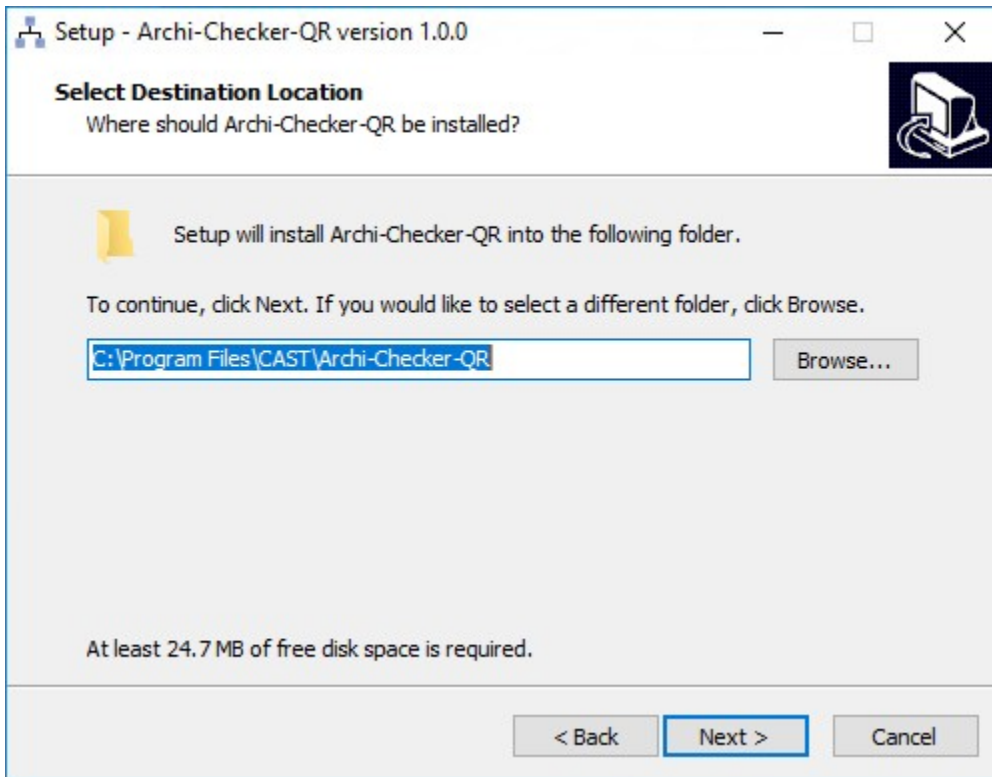
Double click the **executable** file. Click **Yes**, when prompted to allow the installation.



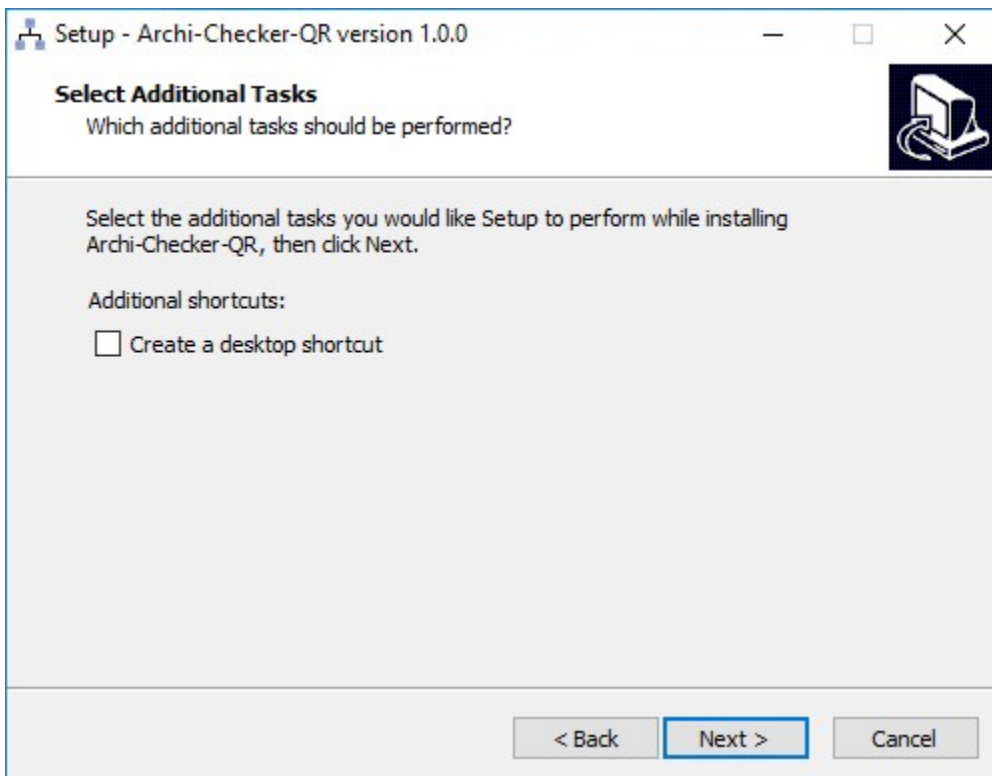
The installation wizard will be displayed.



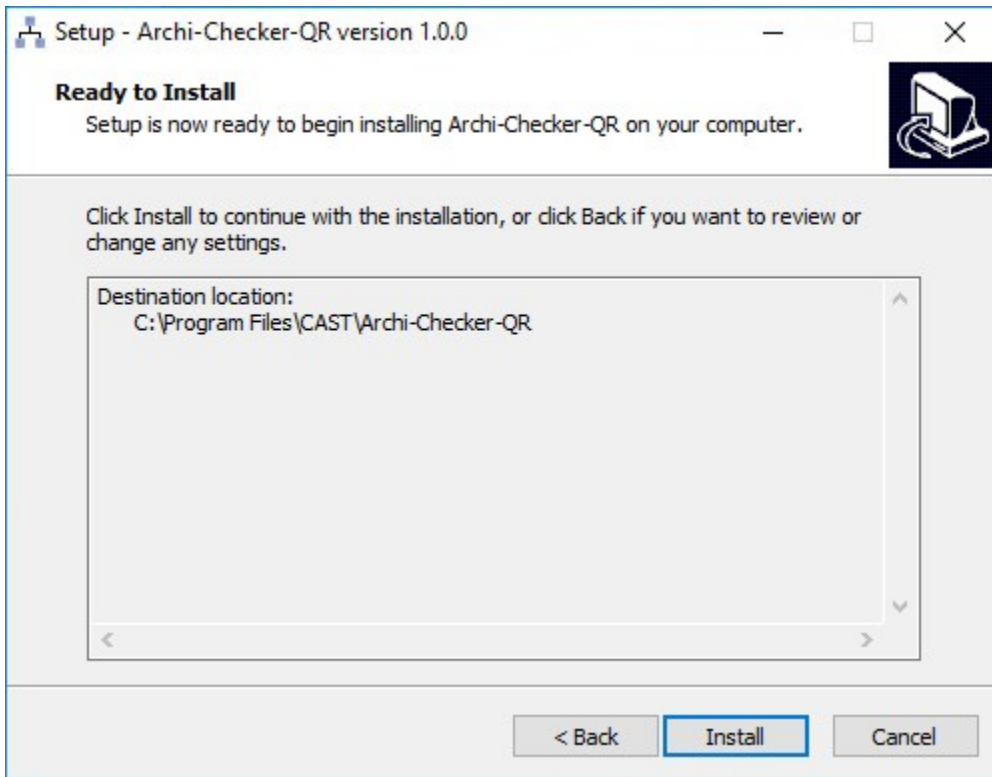
Read and accept the license agreement and click **Next**:



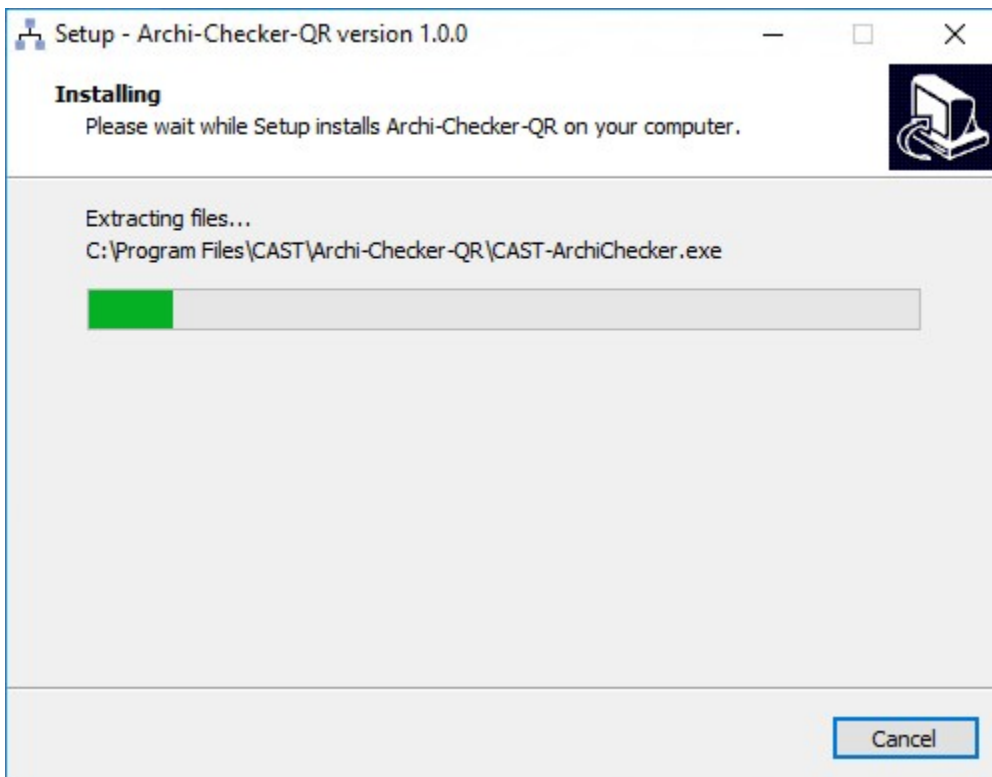
Choose a location on the local machine that will be used for the CAST Architecture Checker installation. The setup will suggest: %PROGRAMFILES%\CAST\Archi-Checker-QR, you may choose a different location. Click **Next** to continue:



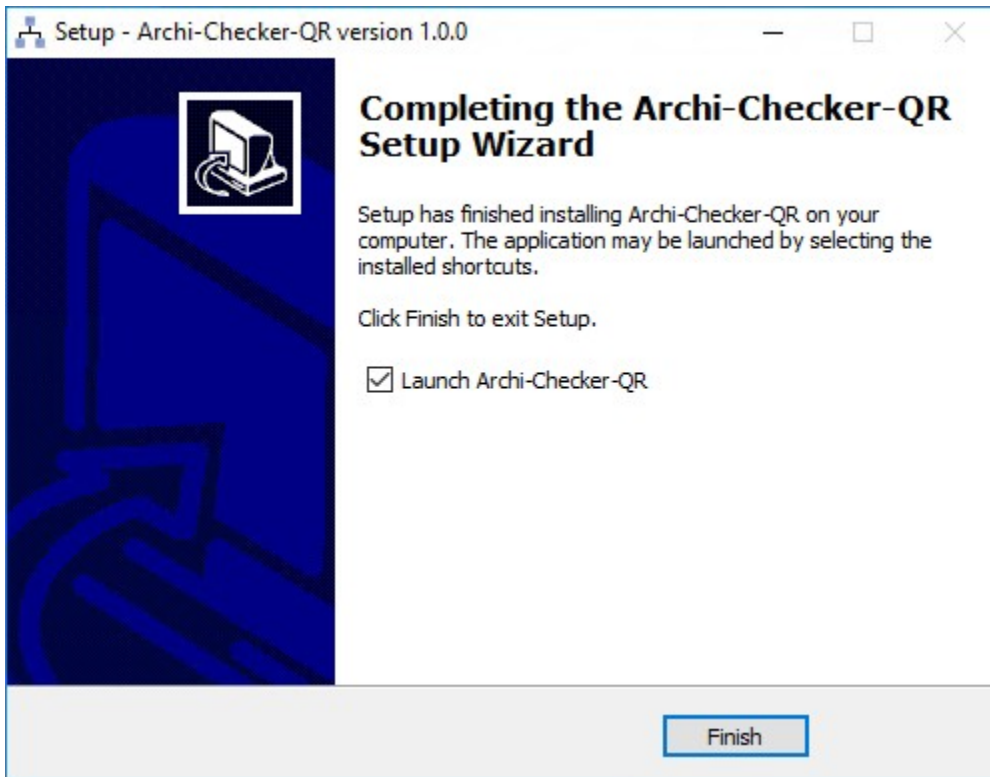
Choose any additional tasks (e.g.: create desktop shortcuts). Click **Next**. A brief summary of the chosen options will be displayed.



Click **Install**, to start the installation process. The installation will proceed:



On completion the following screen is displayed offering to start CAST Architecture Checker.



Click **Finish**, to close the installer.

## What is installed?

### Installation files

On completion of the installation, all files related to CAST Architecture Checker are stored in:

```
%PROGRAMFILES%\CAST\Archi-Checker-QR
```

### Connection profiles

If CAST AIP 8.x exists on the server and if a **cast-ms.connectionProfiles.pmx** exists in:

```
%APPDATA%\CAST\CAST\<>version>
```

...then the **cast-ms.connectionProfiles.pmx** will be copied to:

```
%APPDATA%\CAST\Archi-Checker-QR\<>version>
```

... and the connection profiles will be made available to Architecture Checker. See [CAST Architecture Checker - Connect and select application](#).

### Apps entry point

An entry point will be available in the Apps panel:

## Apps & features

[Manage optional features](#)

[Manage app execution aliases](#)

Search, sort and filter by drive. If you would like to uninstall or move an app, select it from the list.

Sort by: Name ▾    Filter by: All drives ▾

	Archi-Checker-QR version 1.0.0	24.7 MB 18/03/2019
---	--------------------------------	-----------------------

## Next steps?

Please see [CAST Architecture Checker - User Guide](#) for more information.