


# CAST Architecture Checker - Connect and select application

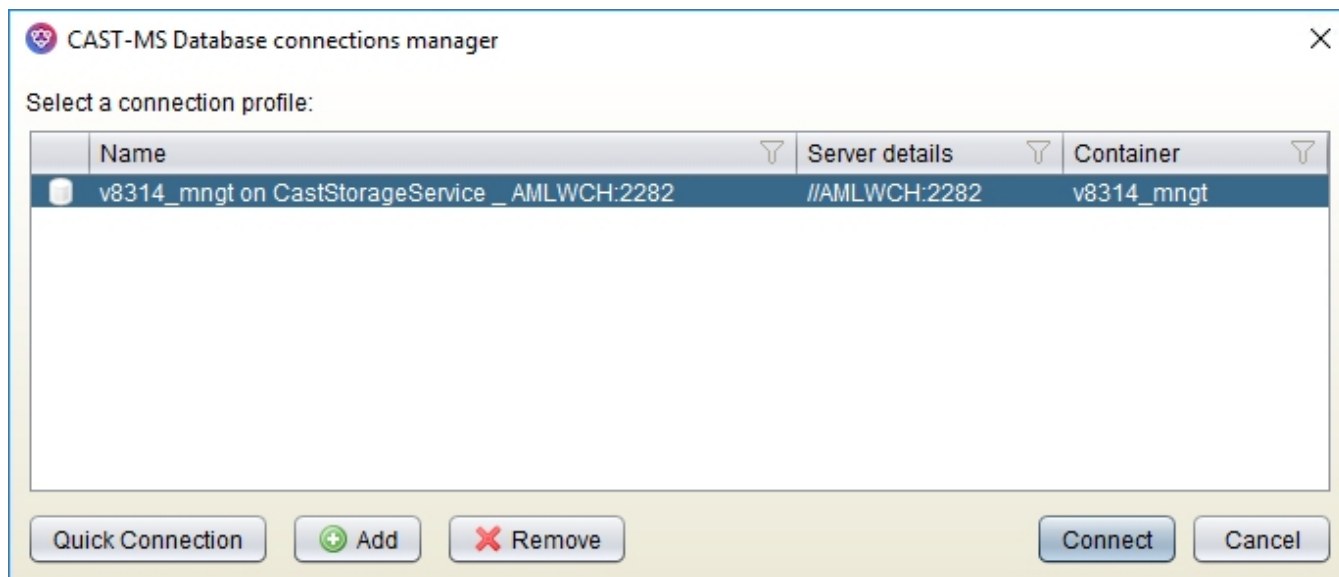
- [Introduction](#)
- [Available options](#)
- [Quick Connection fields](#)
  - [CSS \(CAST Storage Service/PostgreSQL\)](#)
  - [Oracle](#)
  - [SQL Server](#)

## Introduction

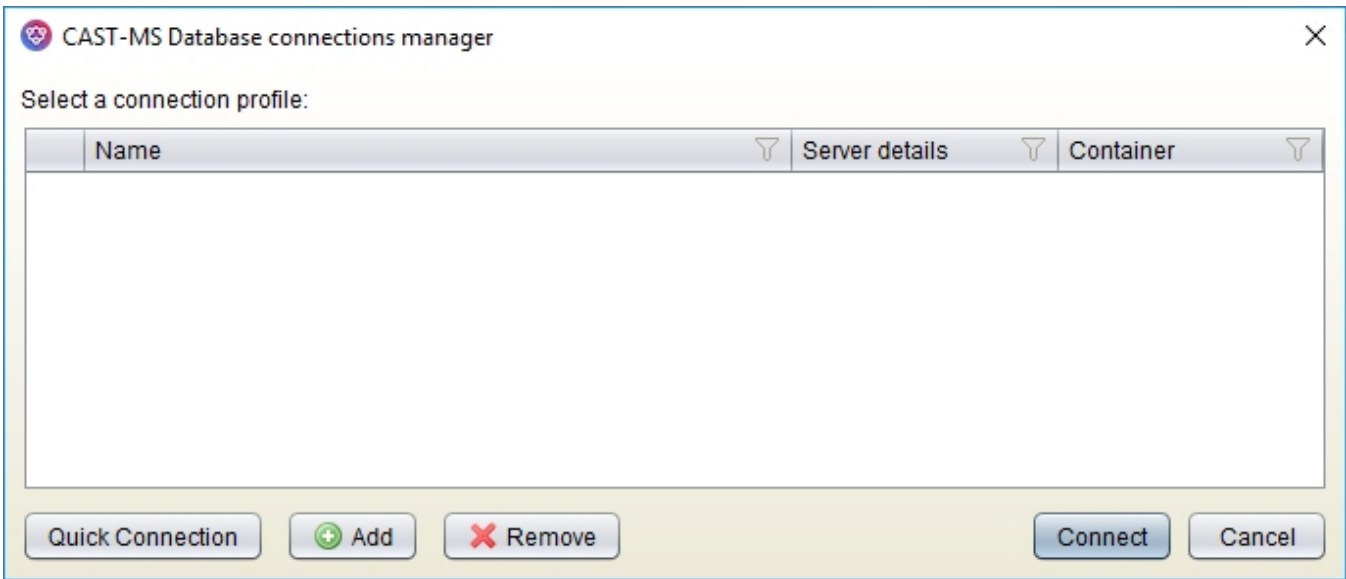
This option enables you to connect to a CAST Management Service schema in order to check your **model online and interactively**. The option can be accessed:

- From the [Action](#) > **Connect and selection application** menu
- Using the  [Toolbar](#) icon

When selected, the **CAST Management Studio Database Connection Manager** will be displayed offering you the option to connect to a CAST Management Service schema. Some profiles may **already** be listed in the dialog copied over from CAST AIP during the installation (see [CAST Architecture Checker - Installation process](#))



otherwise, the dialog will be empty:



## Available options

Option	Description
Connection profile list	<ul style="list-style-type: none"><li>• <b>Name</b> &gt; Name of the connection profile</li><li>• <b>Server details</b> &gt; Indicates the host server name and connection port</li><li>• <b>Container</b> &gt; Indicates the name of the target CAST Management Service schema (&lt;prefix&gt;_MNGT)</li></ul>

**Quick Connection**

If you do not see the profile you require in the Connection Manager, you can use the **Quick Connection** button to configure a "temporary" connection. Clicking this will display the **Connection dialog box** - see [below](#) for an explanation of the available fields:

Connection

CSS Oracle SQL Server

Server address

Port


Database

User name

Password

Schema (management base)

Ok Cancel

 This connection will not be saved as profile.

**Add**

Use this button to **add a new connection profile**. A dialog box will be displayed enabling you to define the connection parameters for your CAST Storage Service/PostgreSQL instance:

Add Connection ✕

CSS 

---

Server address


Port

Database

User name

Password

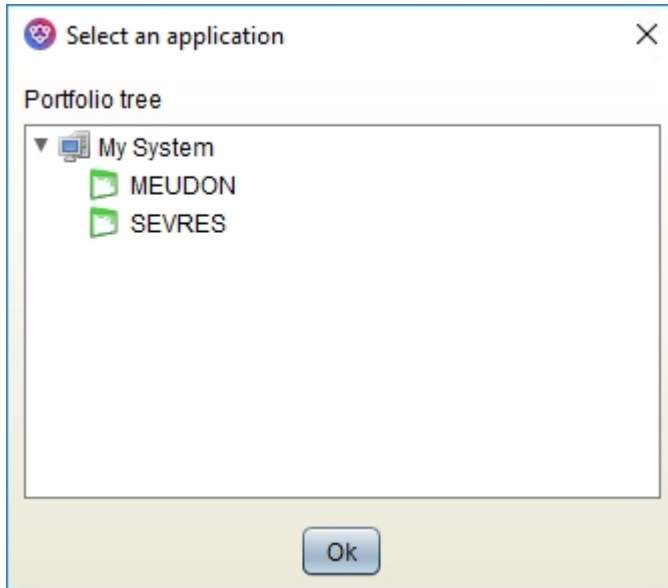
Schema (management base)

 Connection profiles are stored on the local machine in the following location in a file called **cast-ms.connectionProfiles.pmx**:


	<b>Server address</b>	<p>Enter the <b>host name</b> of the server on which the CAST Storage Service/PostgreSQL instance is installed. You can also enter an IP address if required.</p> <p>If this field is left blank, then the CAST Architecture Checker will use the value <b>localhost</b> by default (which assumes the host server is installed on the same physical machine).</p>				
	<b>Port</b>	<p>Enter the <b>port number</b> on which the CAST Storage Service/PostgreSQL instance is listening for incoming connections. Please enter the correct port number - if this is omitted, the port number <b>2278</b> will be used, which may not be correct:</p> <table border="1" data-bbox="479 388 641 493"> <tr> <td data-bbox="479 388 576 430"><b>CSS3</b></td> <td data-bbox="576 388 641 430">2282</td> </tr> <tr> <td data-bbox="479 430 576 493"><b>CSS2</b></td> <td data-bbox="576 430 641 493">2280</td> </tr> </table>	<b>CSS3</b>	2282	<b>CSS2</b>	2280
<b>CSS3</b>	2282					
<b>CSS2</b>	2280					
	<b>Database</b>	<p>Enter the <b>database name</b> used by your CAST Storage Service/PostgreSQL instance.</p> <p>The parent database name in a CAST Storage Service/PostgreSQL instance environment is set by default to <b>postgres</b>. If this field is omitted, the CAST Architecture Checker will use <b>postgres</b> by default.</p>				
	<b>User name</b>	<p>Enter the user name that you will use to connect to the CAST Management Service on your host server. Enter the pre-defined CAST Storage Service user <b>operator</b>, or a <b>custom user</b> (note that the "User name" field is case sensitive).</p>				
	<b>Password</b>	<p>Enter the password that corresponds to the user entered in the User name field.</p>				
	<b>Schema (management base)</b>	<p>Enter the name of the target Management Service schema (<b>&lt;prefix&gt;_mngt</b>).</p>				
<b>Remove</b>	<p>Use this button to <b>remove</b> a selected profile.</p>					

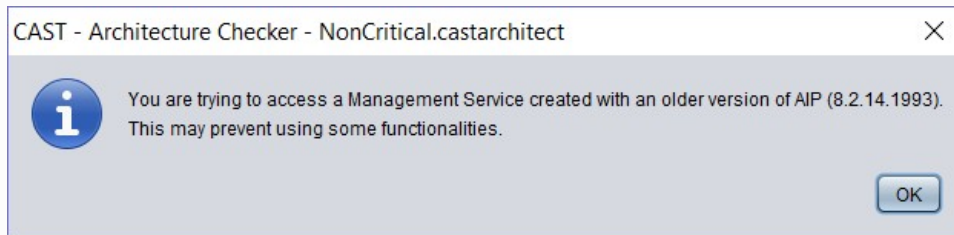
## Connect

Attempts to connect to the Management Service schema defined in the selected profile. If successful you will be prompted to select the application you want to check using Architecture Checker:



Select the application and click **OK**. At this point, what happens depends on the current scenario - this is explained in more detail in [Working online](#).

 Note that you may receive the following message if you attempt to connect to an Application hosted in CAST AIP schemas that were created with an older release of CAST AIP:



## Quick Connection fields

If you do not see the profile you require in the Connection Manager, you can use the **Quick Connection** button to configure a "temporary" connection:

A tab for each supported connection type is available - see below for more information about each tab and how to configure a connection.

## CSS (CAST Storage Service/PostgreSQL)

To connect to a Management Service hosted on a CAST Storage Service/PostgreSQL, fill in the following information.

<b>Server address</b>	<p>Enter the <b>host name</b> of the server on which the CAST Storage Service/PostgreSQL instance is installed. You can also enter an IP address if required.</p> <p>If this field is left blank, then the CAST Architecture Checker will use the value <b>localhost</b> by default (which assumes the host server is installed on the same physical machine).</p>				
<b>Port</b>	<p>Enter the <b>port number</b> on which the CAST Storage Service/PostgreSQL instance is listening for incoming connections. Please enter the correct port number - if this is omitted, the port number <b>2278</b> will be used, which may not be correct:</p> <table border="1" data-bbox="350 1465 509 1575"> <tr> <td><b>CSS3</b></td> <td>2282</td> </tr> <tr> <td><b>CSS2</b></td> <td>2280</td> </tr> </table>	<b>CSS3</b>	2282	<b>CSS2</b>	2280
<b>CSS3</b>	2282				
<b>CSS2</b>	2280				
<b>Database</b>	<p>Enter the <b>database name</b> used by your CAST Storage Service/PostgreSQL instance.</p> <p>The parent database name in a CAST Storage Service/PostgreSQL instance environment is set by default to <b>postgres</b>. If this field is omitted, the CAST Architecture Checker will use <b>postgres</b> by default.</p>				
<b>User name</b>	<p>Enter the user name that you will use to connect to the CAST Management Service on your host server. Enter the pre-defined CAST Storage Service user <b>operator</b>, or a <b>custom user</b> (note that the "User name" field is case sensitive).</p>				
<b>Password</b>	<p>Enter the password that corresponds to the user entered in the User name field.</p>				
<b>Schema (Management Service)</b>	<p>Enter the name of the target Management Service schema (&lt;prefix&gt;_mngt).</p>				

## Oracle

To connect to a Management Service hosted on an Oracle server, fill in the following information.

<b>Server address</b>	<p>Enter the <b>host name</b> of the server on which the Oracle server is installed. You can also enter an IP address if required.</p> <p>If this field is left blank, then the CAST Architecture Checker will use the value <b>localhost</b> by default (which assumes the host server is installed on the same physical machine).</p>
<b>Port</b>	<p>Enter the <b>port number</b> on which the Oracle server is listening for incoming connections.</p> <p>During the installation of the Oracle server, the port number is set by default to <b>1521</b> and unless you have explicitly changed this during the installation process, then there is no need to enter a number in this field: when left blank, the CAST Architecture Checker will use port number <b>1521</b> by default.</p>
<b>Service/SID</b>	<p>Choose the appropriate database server access mode type for your Oracle server (<b>SID</b> or <b>Service</b>). Then enter either the Service name or the SID value in the field below.</p> <p>The CAST Architecture Checker uses the value <b>ORCL</b> by default for the <b>Service</b> name - as such, if your Oracle server Service name is <b>ORCL</b>, you can leave this field blank (ensuring that <b>Service</b> is selected).</p> <p>Note that there is no default value for the <b>SID</b>.</p>
<b>User name</b>	<p>Enter the user name that you will use to connect to the CAST Management Service on your host server. See <a href="#">Access Rights</a> for more information about required user rights (note that the User name is case sensitive).</p>
<b>Password</b>	<p>Enter the password that corresponds to your User name</p>
<b>Schema (Management Service)</b>	<p>Enter the name of the target Management Service (<b>&lt;prefix&gt;_mngt</b>).</p>

## SQL Server

To connect to a Management Service hosted on an a Microsoft SQL Server, fill in the following information.

<b>Server address</b>	<p>Enter the <b>host name</b> of the server on which the Microsoft SQL Server is installed. You can also enter an IP address if required.</p> <p>If this field is left blank, then the CAST Architecture Checker will use the value <b>localhost</b> by default (which assumes the host server is installed on the same physical machine).</p>
<b>Port /Instance</b>	<p>Choose the appropriate database server access mode type for your Microsoft SQL Server (<b>Port</b> or <b>Instance</b>). Then enter either the <b>Port number</b> or the <b>Instance name</b> in the field below.</p> <p>During the installation of the Microsoft SQL Server, the port number is set by default to <b>1433</b> and unless you have explicitly changed this during the installation process, then there is no need to enter a number in this field: when left blank, the CAST Architecture Checker will use port number <b>1433</b> by default (when <b>Port</b> is selected)</p> <p>Note that there is no default value for the <b>Instance</b>.</p>
<b>User name</b>	<p>Enter the user name that you will use to connect to the CAST Management Service on your host server. See <a href="#">Access Rights</a> for more information about required user rights (note that the User name is case sensitive).</p>
<b>Password</b>	<p>Enter the password that corresponds to your User name</p>
<b>Schema (Management Service)</b>	<p>Enter the name of the target Management Service (<b>&lt;prefix&gt;_mngt</b>).</p>