

CMS - Test connection

Test connection

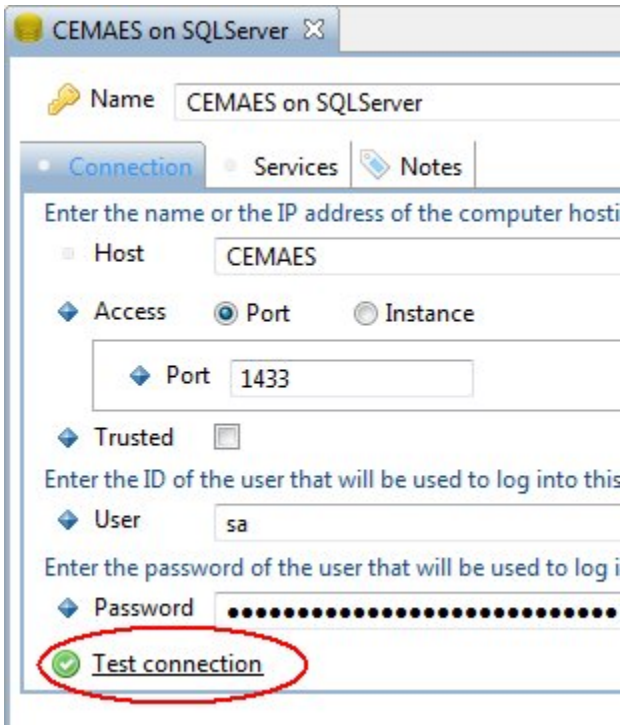
If you want to **test the connection** from the CAST Management Studio to your the database server hosting your Management/Analysis/Dashboard Services (in case of connection issues, or when you have [added a database server](#)) then you can do so from the [Services view](#) or from the [Database server editor](#):

Services view

- Right click the database server you want to test
- Select **Connection > Test Connection** from the shortcut menu

Database Server editor

- Click the **Test Connection** option:



In both cases a dialog box will indicate whether the CAST Management Studio was able to establish a connection using the parameters specified in the [Database server editor](#)

See Also

[Services view](#) | [Database server editor](#)