

# CAST Architecture Checker - Release Notes - 1.2

- 1.2.1
  - Updates
    - Architecture Library improvements
    - Cosmetic updates to the GUI
- 1.2.0
  - Updates
    - New Architecture Library
    - Improved export of Quality Rule Models

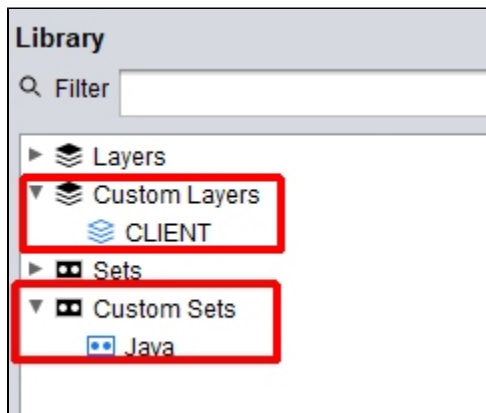
**i** **Installing a new release** - CAST does not support the upgrade of CAST Architecture Checker from any previous release. Therefore, CAST recommends **uninstalling** the previous release of CAST Architecture Checker and then **installing** the new release from scratch.

## 1.2.1

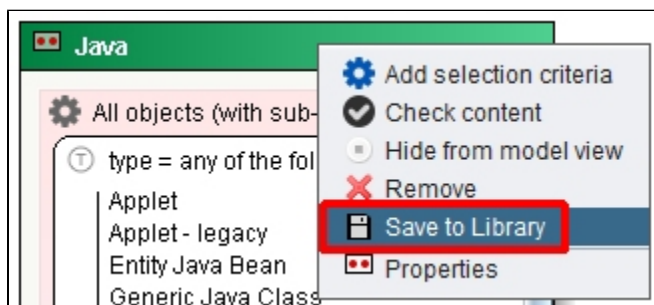
### Updates

#### Architecture Library improvements

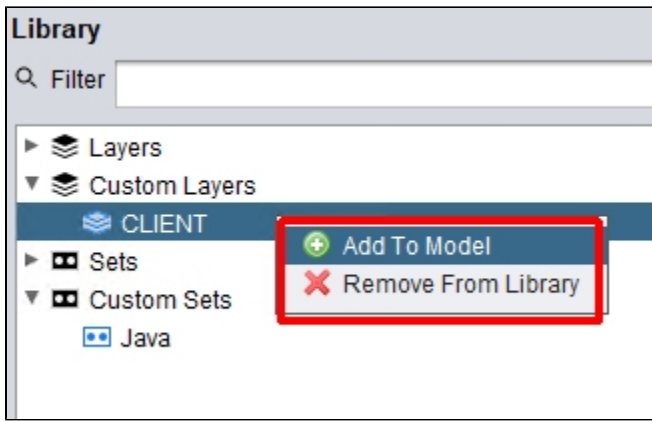
It is now possible to add **existing Layers and Sets** in **Architecture Models** and **Quality Rule Models** to the **Architecture Library** for re-use in other models (in 1.2.0 the Architecture Library was introduced with no ability to add Layers/Sets to it). When a Layer or Set is added to the Library, it will appear as a **Custom Layer** or a **Custom Set**:



Layers and Sets can be **added to the Library** by right clicking the header bar and selecting **Save to Library**:



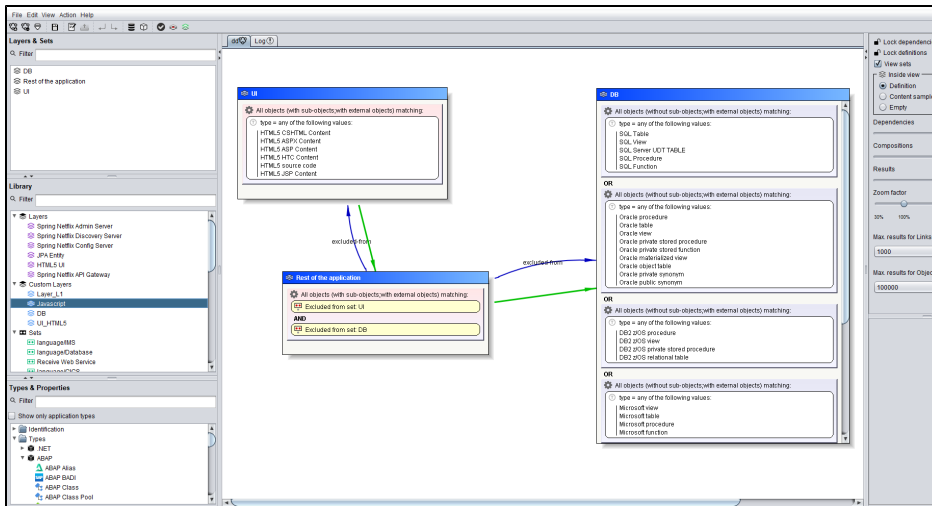
The Custom items can be **re-used** in models or **removed** from the Library:



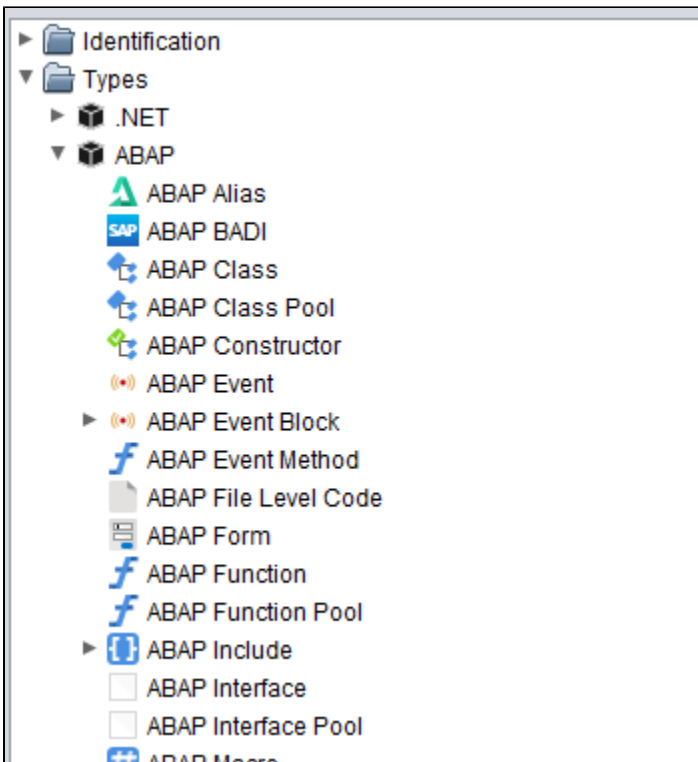
## Cosmetic updates to the GUI

All icons have been updated in the GUI:

*Click to enlarge*



New icons are also added for metamodel object types:



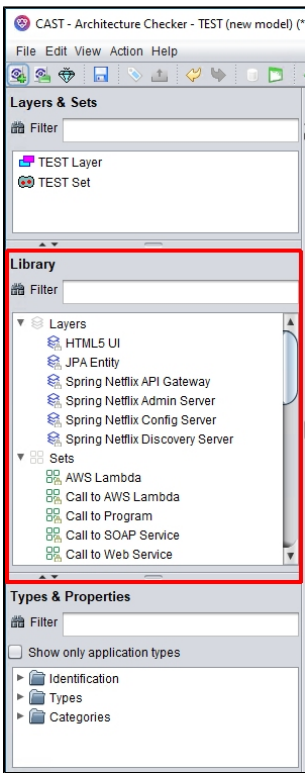
## 1.2.0

### Updates

#### **New Architecture Library**

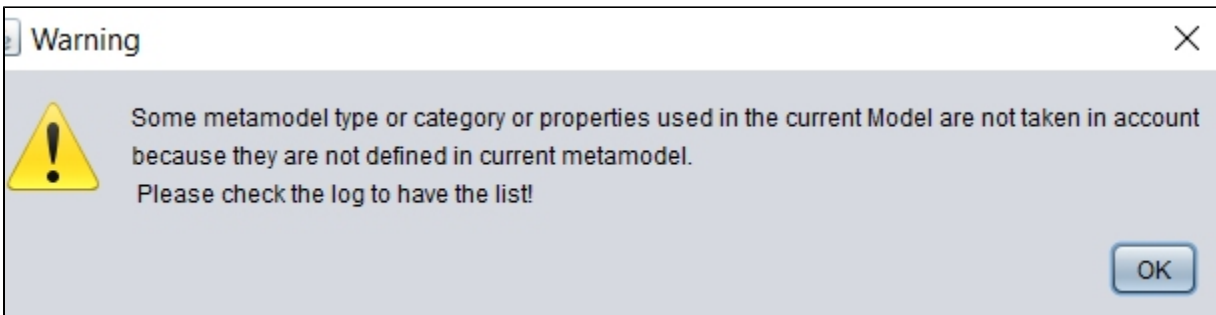
A new [Architecture Library](#) has been added to CAST Architecture Checker and is available in the left hand panel. Its goal is to provide a set of predefined Layers and Sets that can be re-used for both [Architecture Models](#) and [Quality Rule Models](#):

*Click to enlarge*



## Improved export of Quality Rule Models

When **exporting a Quality Rule Model as an extension**, the export process will now check whether any sets/layers defined in the model are present in the metamodel and if not will display a **warning message** to that effect:



The export process will be allowed to continue (in previous releases a **"null error"** was displayed and the **export failed**) and the log will contain information about the types that are not in the metamodel so that these can be corrected:

Message	Dependency type: QualityRule	Dec 19, 2019 12:54:26 PM
Message	Open quality rule project UnsecuredCommunication.CASTRule	Dec 19, 2019 12:56:51 PM
Message	Dependency type: QualityRule	Dec 19, 2019 12:56:51 PM
Error	Failed to get metamodel definition for : CAST_NodeJS_Restify_ANY - Category or type will be skipped	Dec 19, 2019 12:56:54 PM
Error	Failed to get metamodel definition for : CAST_NodeJS_Restify_DELETE - Category or type will be skipped	Dec 19, 2019 12:56:54 PM
Error	Failed to get metamodel definition for : CAST_NodeJS_Restify_GET - Category or type will be skipped	Dec 19, 2019 12:56:54 PM
Error	Failed to get metamodel definition for : CAST_NodeJS_Restify_POST - Category or type will be skipped	Dec 19, 2019 12:56:54 PM

**i** Note that this check functions in **online and offline mode**:

- when in **offline mode**, the "metamodel" checked by CAST Architecture Checker is an "offline" metamodel stored on disk in %PROGRAMFILES%\CAST\Archi-Checker-QR\configuration\Languages
- when in **online mode**, the "metamodel" checked by CAST Architecture Checker is the metamodel present in your selected Application.

Note also that when an error linked to the metamodel exists in the Model before export, the layer or set will be displayed in red:

