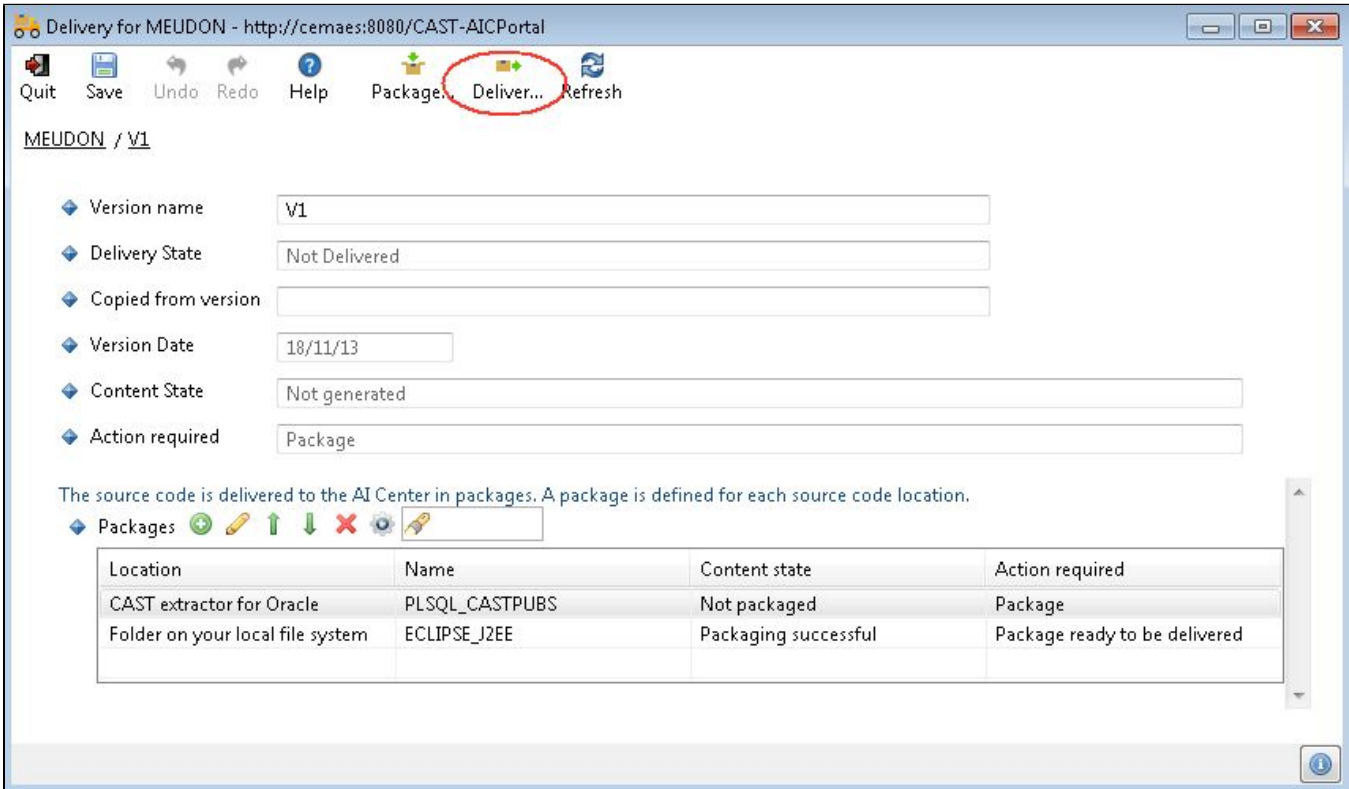


How do I deliver the application Version for analysis

Once you have completed the creation and configuration of the source code packages in the CAST Delivery Manager Tool, you need to complete the process by **delivering** these packages (i.e. the Version) to the CAST AIC Portal so that the AI Administrator can retrieve the source code and analyze it with the CAST Management Studio.

To do so:

- Ensure you are working in the **current Version** screen.
- Click the **Deliver** button in the CAST Delivery Manager Tool as shown below - this will upload all source code packages attached to the parent Version as listed in this screen:



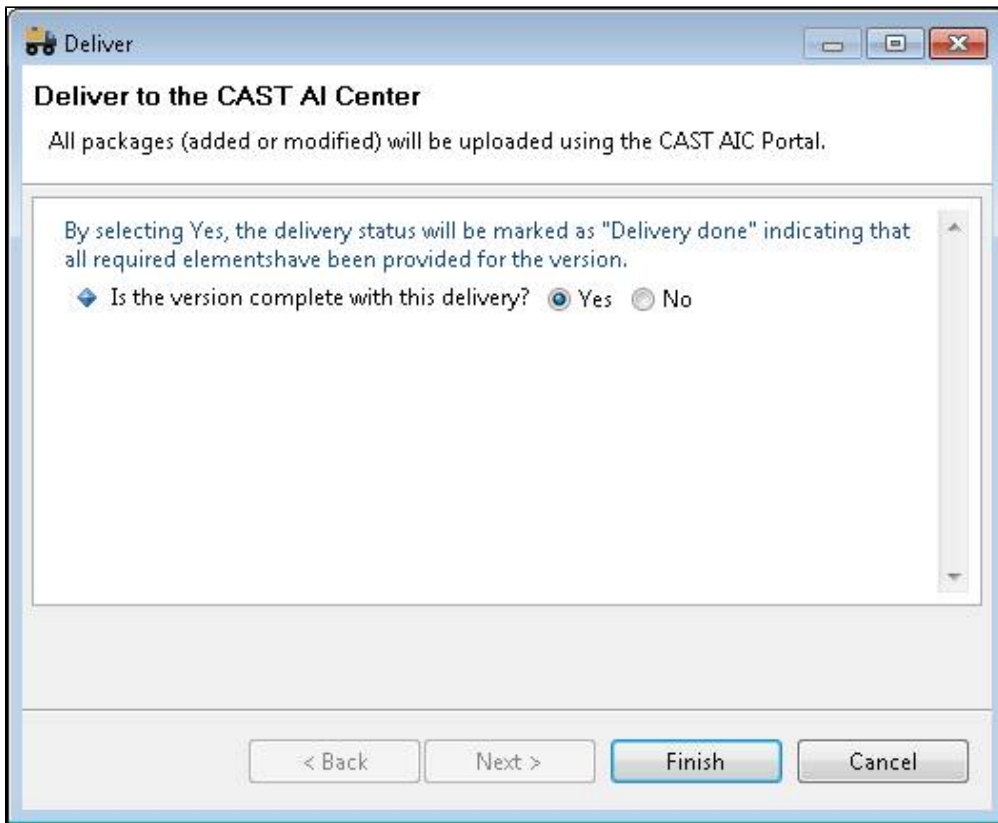
The screenshot shows the 'Delivery for MEUDON' window. The title bar indicates the URL 'http://cemaes:8080/CAST-AICPortal'. The menu bar includes 'Quit', 'Save', 'Undo', 'Redo', 'Help', 'Package...', 'Deliver...', and 'Refresh'. The 'Deliver...' button is circled in red. Below the menu bar, the version 'MEUDON / v1' is displayed. A form contains the following fields:

- Version name: v1
- Delivery State: Not Delivered
- Copied from version: (empty)
- Version Date: 18/11/13
- Content State: Not generated
- Action required: Package

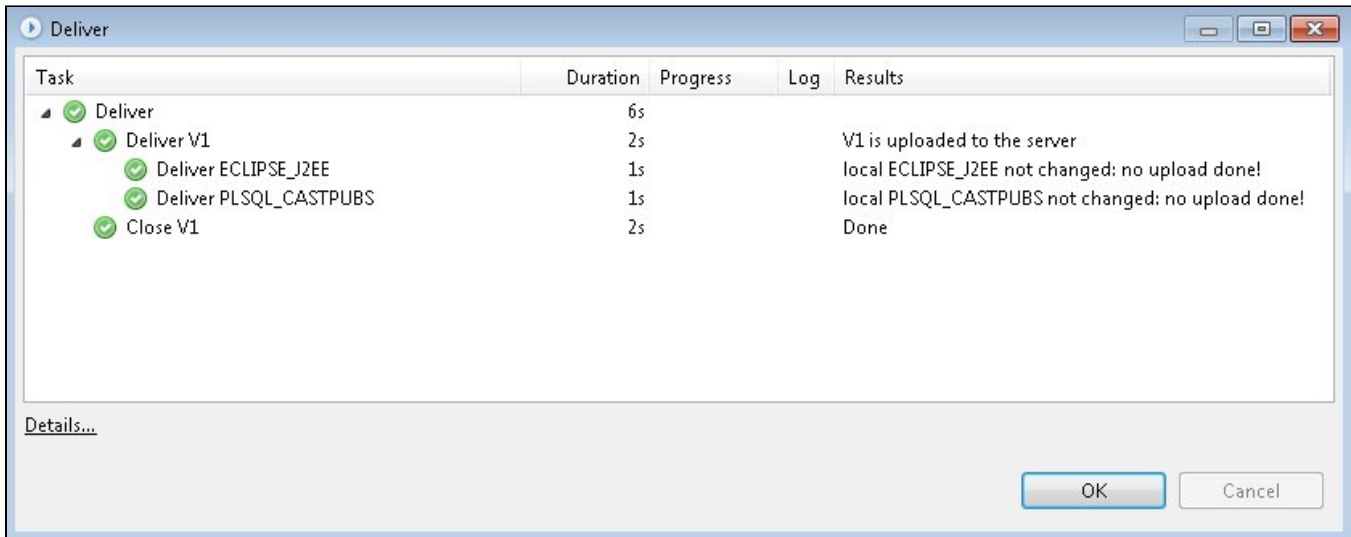
Below the form, a message states: 'The source code is delivered to the AI Center in packages. A package is defined for each source code location.' A 'Packages' section contains a table with the following data:

| Location | Name | Content state | Action required |
|----------------------------------|----------------|----------------------|-------------------------------|
| CAST extractor for Oracle | PLSQL_CASTPUBS | Not packaged | Package |
| Folder on your local file system | ECLIPSE_J2EE | Packaging successful | Package ready to be delivered |

- You will be asked if the version is **complete** - choosing **Yes** sets the current version as **closed** (i.e. read only and "done") to any further source code package creation/modification by yourself or any other Delivery Managers. We will close the delivery in this example:



- Click **Finish** to proceed.
- The **Deliver** process will then begin - a progress dialog box will be displayed:



i Note that a **Deliver** is a one way action - in other words it only "uploads" items from a local machine to the CAST AIC Portal. It is distinct from a **Refresh** which will "download" items from the CAST AIC Portal.