

# C and Cpp File Discoverer 1.1

## On this page:

- [Extension ID](#)
- [What's new?](#)
- [Extension description](#)
  - [In what situation should you install this extension?](#)
  - [Technical information](#)
- [New in this release](#)
- [CAST AIP compatibility](#)
- [Download and installation instructions](#)
- [Extension interface](#)
- [Packaging your source code with the CAST Delivery Manager Tool](#)

## Target audience:

CAST Administrators



**Summary:** Information about the **C and C++ File Discoverer 1.1.x** for the CAST Delivery Manager Tool. This extension is a **file discoverer**.



CAST recommends using the [CPP Compilation Database Discoverer](#) extension instead of the **C and C++ File Discoverer** where possible.

The [CPP Compilation Database Discoverer](#) extension detects projects based on the presence of specific build compilation output files and their content. It can be used in conjunction with:

- [C Family extension / Objective-C extension](#)
- [C/C++ Analyzer](#) embedded in CAST AIP

## Extension ID

`com.castsoftware.dmtcfilediscoverer`

## What's new?

Please see: [C and Cpp File Discoverer - 1.1 - Release Notes](#) for more information.

## Extension description

This discoverer detects projects based on the presence of C or C++ files according to a list of extensions declared for these languages.

## In what situation should you install this extension?

This extension should be used when you **don't** use Microsoft C/C++ projects to build your C/C++ application. Project files such as **makefile** are not supported by the discoverers provided "out of the box" in the CAST Delivery Manager Tool. Therefore, this extension acts as a kind of "catch-all" to ensure that all C and C++ files will be packaged for analysis.

When the extension is installed, you can choose to activate it (or not) in each package you create in the CAST Delivery Manager Tool. To do so, click the **Package Configuration tab** and define the type of projects to discover in the package (refer to the **Packaging your source code with the CAST Delivery Manager Tool** paragraph below).

## Technical information



What does the extension identify - i.e. what does it consider as a "project" and therefore an Analysis Unit in the CAST Management Studio?

Only one project is created per package when C or C++ files are detected (i.e. one project is equal to one Analysis Unit) - the following are supported:

- \*.c, \*.pc, \*.ppc
- \*.cpp, \*.cc, \*.cxx

This project will use the name of the top-folder that contains C or C++ files. As such, given the following folder structure (for example):

```
root
-folder1
--folder2
---src
----folder3
-----file1.c
----folder4
-----file2.c
----folder5
-----file3.c
-----file4.cpp
---include
----file1.h
----file2.h
```

Using this extension with the above folder structure will yield a project called "**src**" with a root path **folder1/folder2/src**. This project references the folder corresponding to the root in order to include all C/C++ files. If header files are found outside the top-folder, they are not added in the references of the project.



Note that even if the extension is activated, NO project will be created when at least one Microsoft C/C++ .vcproj or .vcxproj project definition file is identified in any location under the root path (including recursive sub-folders).

## New in this release

The **C and C++ File Discoverer 1.1.x** brings the following update over previous releases:

- File extensions that are taken into account by the **C and C++ File Discoverer** are now taken directly from the CAST AIP language definition, rather than being hard coded in the discoverer itself.
- The following file extensions are now taken into account:
  - **C files:** \*.c, \*.pc, \*.ppc
  - **C++ files:** \*.cpp, \*.cc, \*.cxx
- NO project will be created when at least one Microsoft C/C++ .vcproj or .vcxproj project definition file definition is identified in any location under the root path (including recursive sub-folders).

# CAST AIP compatibility

This extension is compatible with:

CAST AIP release	Supported
8.2.x	✓
8.1.x	✓
8.0.x	✓
7.3.5 and all higher 7.3.x releases	✓

## Download and installation instructions

Please see:

- <http://doc.castsoftware.com/display/EXTEND/Download+an+extension>
- <http://doc.castsoftware.com/display/EXTEND/Install+an+extension>



- This extension contains a **File discoverer** and you should take note of the specific instructions in the installation guide that explains how to package your source code with the CAST Delivery Manager Tool when you have an **existing Version**.
- The latest [release status](#) of this extension can be seen when downloading it from the CAST Extend server.

## Extension interface

The following screen shots show the differences in the product when the extension is installed:

- in the CAST Delivery Manager Tool, in the **Package configuration tab**, the interface contains a new item in the list of **"Project types discovered"**:

Package configuration | Package content

This tab allows you to define what source code will be extracted and therefore included.

▶ **Where is your source code?**

▼ **Which project should we take into account for the analysis?**


In this configuration section, you can filter the list of projects that should be analyzed. By default all projects found are included.

▼ **Type of projects to discover in the package**

Specify the project types that the CAST Delivery Manager Tool should discover in the package. This is particularly useful for situations where your Source Code target contains multiple project types.

◆ **Project types discovered**

- SAP project
- Power Builder project
- Mainframe project
- Visual Basic.NET project
- Visual C# project
- ASP.Net Web Site
- Visual Basic 6 project
- ASP
- Visual C++ 2010-2012 project
- Visual C++ 2002-2008 project
- C/C++ files
- Eclipse no nature project
- Eclipse Java project



- in the CAST Delivery Manager Tool, in the **Package content tab**, when the package contains some C/C++ files, the interface will display a new item in the list of **"Project types discovered"**:

Delivery for DISCFIL in C:\CASTMS\DeliveryDISCFIL\data

Quit Save Undo Redo Help Package... Deliver

Demo / Sources

Package name Sources

Content state Packaging successful

Action required Package ready to be delivered

Last extraction on 5/26/15 9:24 PM

Package configuration Package content

This tab displays information about what the Source Package contains - as such, it is only populated with data once you have generated a Source Package.

Projects found

Number of Added/Removed items is based on the cloned version of this package

Project summary by type

Project type	Technology	# Selected	# Ignored	# Added	# Removed
C/C++ files	C/C++	1	0	0	0

List of projects for the selected type

T	Name	Path	Selected/Ignored	Compared with last version
	client	client	Selected	N/A

Packaging alerts

Files found

Number of Added/Removed items is based on the cloned version of this package

File summary by type

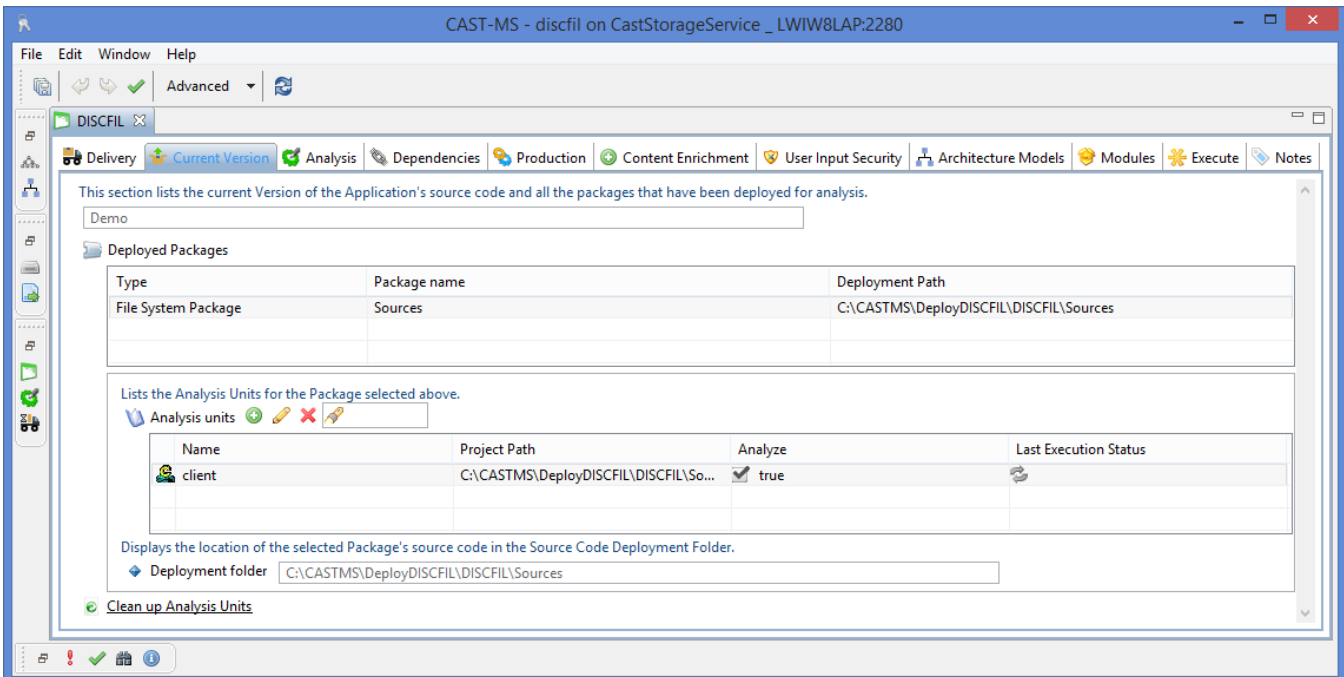
File extension	Total files	Added files	Removed files	Folder
*.acf	2	0	0	<Package root>
*.aps	1	0	0	<Package root>
*.c	47	0	0	<Package root>
*.cpp	40	0	0	<Package root>
*.Dlg	8	0	0	<Package root>
*.H	3	0	0	<Package root>
*.h	895	0	0	<Package root>
*.h16	1	0	0	<Package root>
*.hxx	1	0	0	<Package root>

Log summary

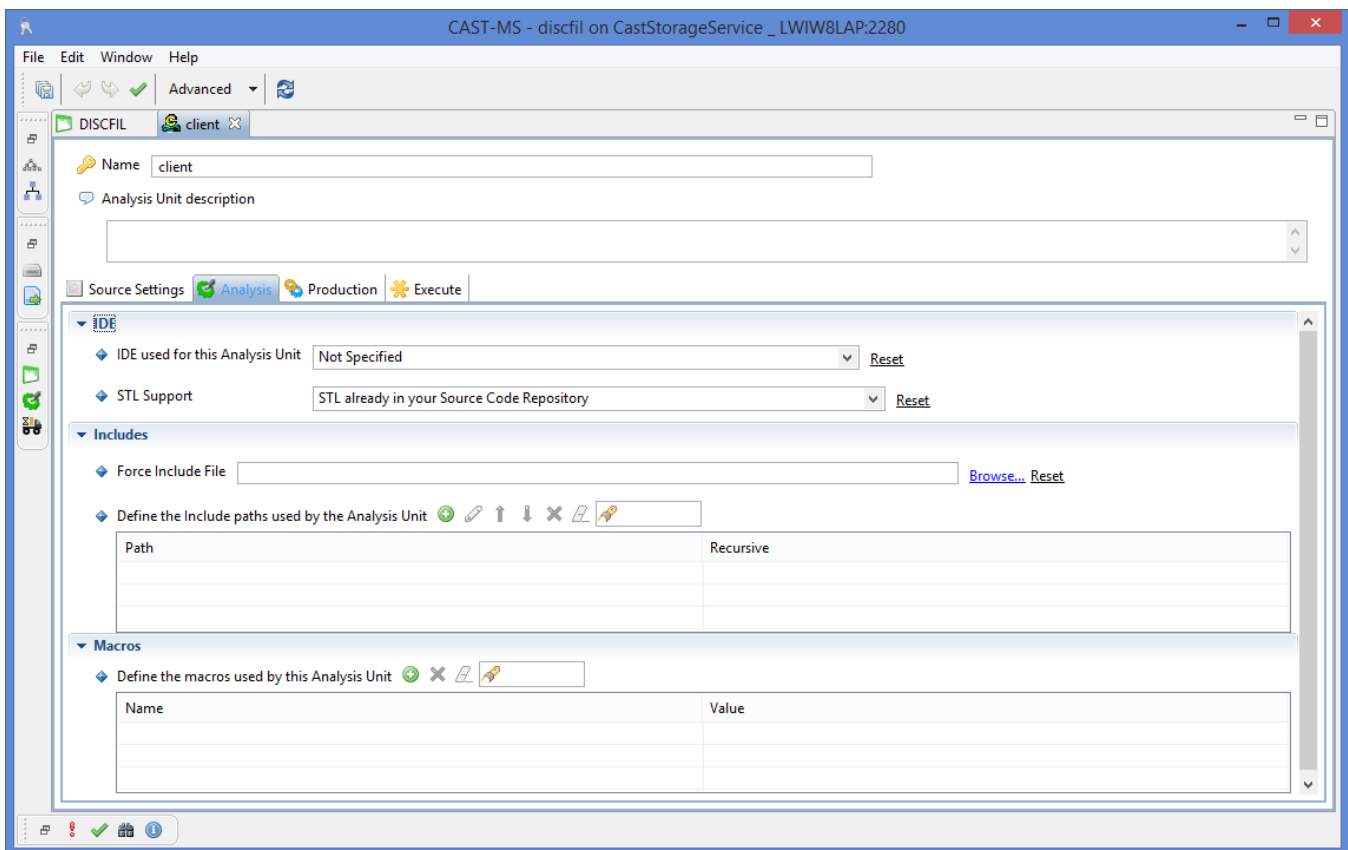
- in the CAST Delivery Manager Tool, in the **Package configuration tab**, you can define the various exclusion of projects with the **"Filtering rules"** and **"Project exclusion"** lists. However, since only one project is created, it's better to unselect the project type discovered rather than create exclusion lists.

**i** Note: please ensure that you exclude projects that correspond to the same source code. If you have some Visual C++ discovered projects inside the same package, CAST recommends deactivating this discoverer.

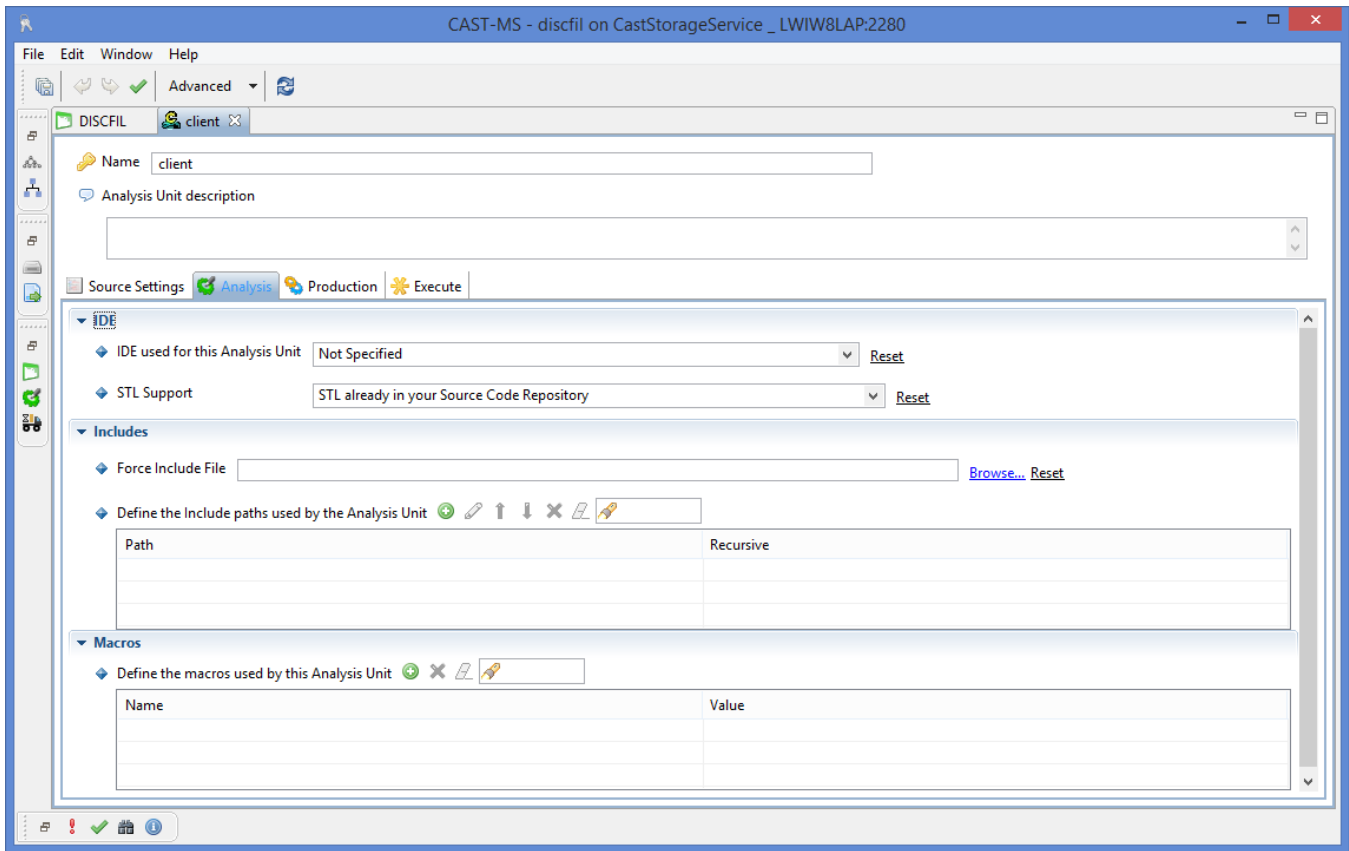
- in the CAST Management Studio, when the delivery is accepted and set as current version, the package will contain Analysis Units corresponding to these projects:



- In the CAST Management Studio, the Analysis Units will contain:
  - the **Source Settings** discovered by the extension:
    - Sources**: path corresponding to the top-folder



- the **Analysis Settings** are not discovered by the extension - you must define them at application level or at analysis unit level



## Packaging your source code with the CAST Delivery Manager Tool

When you use the CAST Delivery Manager Tool to package the source code, please ensure that you tick the following option in the CAST Delivery Manager Tool to activate the extension:



Note that:

- this option will be disabled (unticked) in all pre-existing packages - you need to check it before starting the packaging process otherwise it will be ignored.
- for new packages created after the extension's installation, the option will be enabled by default

- Package configuration
- Package content

This tab allows you to define what source code will be extracted and therefore inclu

▶ **Where is your source code?**

▼ **Which project should we take into account for the analysis?**

In this configuration section, you can filter the list of projects that should be analy  
By default all projects found are included.

▼ **Type of projects to discover in the package**

Specify the project types that the CAST Delivery Manager Tool should discover in  
This is particularly useful for situations where your Source Code target contains n

◆ **Project types discovered**

- SAP project
- Power Builder project
- Mainframe project
- Visual Basic.NET project
- Visual C# project
- ASP.Net Web Site
- Visual Basic 6 project
- ASP
- Visual C++ 2010-2012 project
- Visual C++ 2002-2008 project
- C/C++ files
- Eclipse no nature project
- Eclipse Java project

