

SQL - Run and validate analysis



The information below is valid **only for the legacy PL/SQL and T-SQL analyzers embedded in CAST AIP**. See [SQL - Available extensions](#) for information about SQL related extensions.

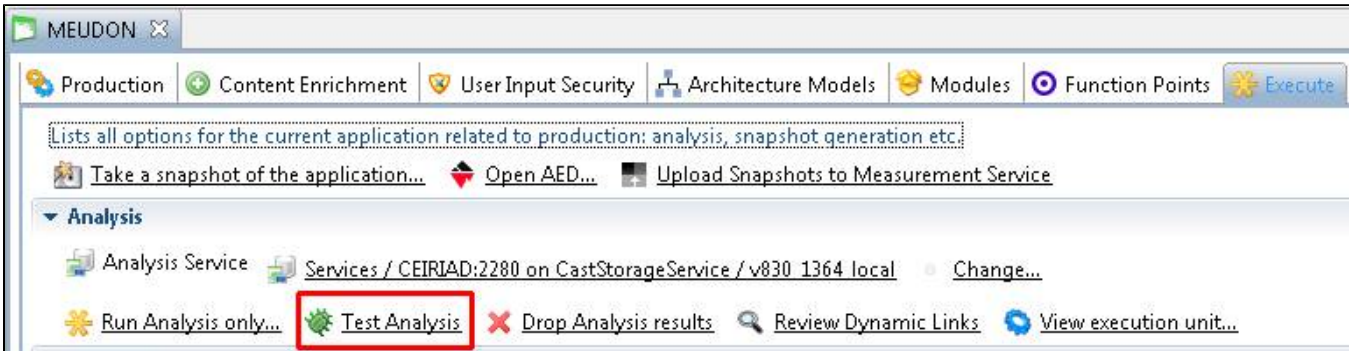
- [AIP Console](#)
- [CAST Management Studio](#)

AIP Console

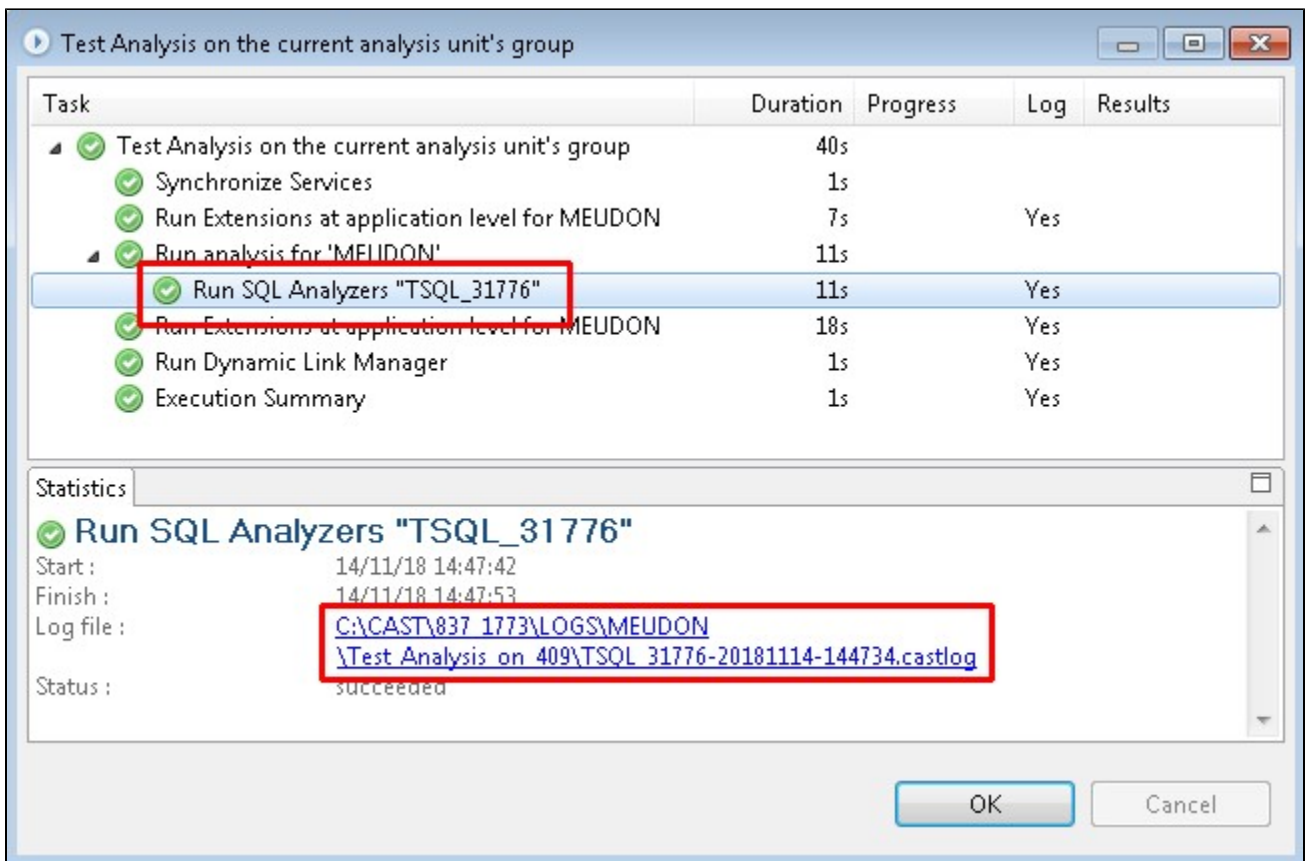
See [Advanced onboarding - run and validate the initial analysis](#) for more information.

CAST Management Studio

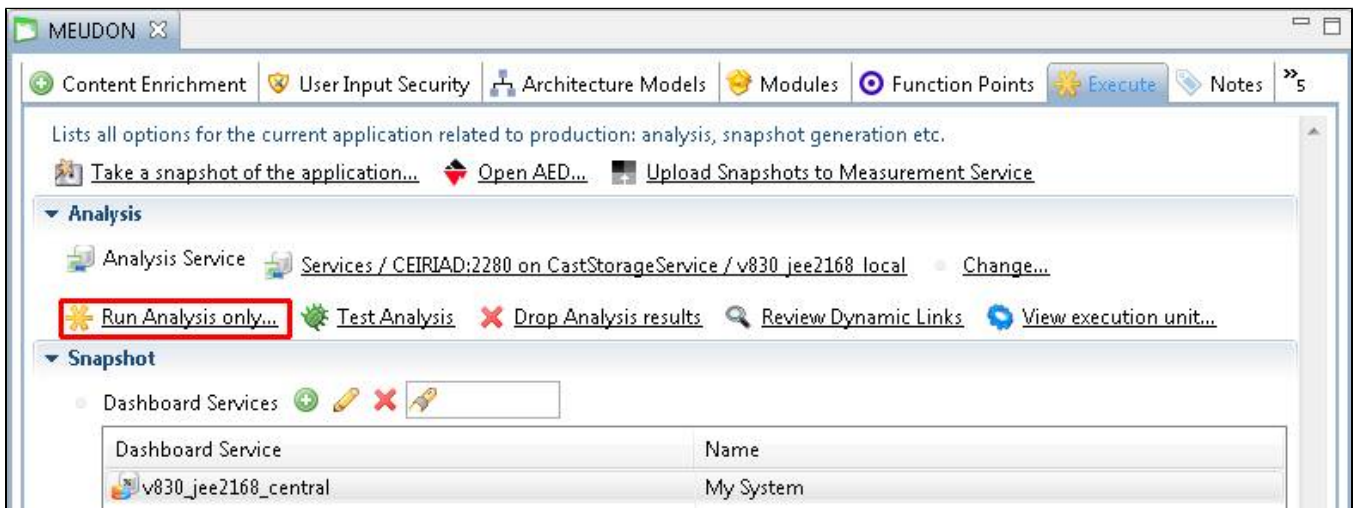
When you are satisfied that you have configured your analysis correctly, we suggest that you run a **test analysis** at Application level before you generate a **new snapshot** (no results will be saved to the CAST Analysis Service):



- On completion, you should **check the test analysis log file** and then clear up any warning or error messages that have been returned by reconfiguring the analysis:



- When all issues and problems have been resolved, you can then use the **Run Analysis only** option to perform an analysis AND save the results in the CAST Analysis Service:



- Finally you can check the [analysis results](#) using, for example, CAST Enlighten and then **generate a snapshot**.