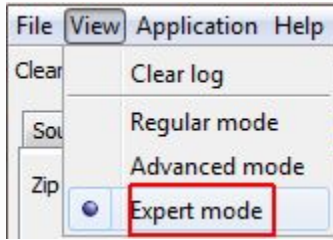


# CAST Database Extractor - Expert panel

**i** This section provides a detailed description of the contents of the **Expert panel** in the [CAST Database Extractor](#). By default this tab is not displayed - to view it, you need to select **View > Expert mode**:



**!** CAST recommends only changing these options if you are requested to do so by CAST Support as part of a troubleshooting process.

Source	Options	Target	Advanced	Expert
Zip Packaging	<input checked="" type="checkbox"/>			
Export Format	text			
Internal ID Cache Folder Path				
Multithreaded Export	<input type="checkbox"/>			
Type To Check				
Verbose Configuration	<input checked="" type="checkbox"/>			
Abort on Fatal Error	<input type="checkbox"/>			
Configuration File Path Override				
Target Zip Packaging	<input type="checkbox"/>			
Unicode Encoding	<input checked="" type="checkbox"/>			
Platform Override				
UAX Relative Paths	<input checked="" type="checkbox"/>			
UAX Code Information Generation	<input checked="" type="checkbox"/>			
IDs Compression in UAX File	<input type="checkbox"/>			

This panel enables you to define the various additional parameters for the extraction and delivery processes.

<b>Zip Packaging</b>	By default this option is set to TRUE. Deactivating the option will cause the extraction results to be output in <b>raw file format</b> , however, CAST recommends that you leave this option activated (TRUE) unless specifically requested to deactivate it by support during troubleshooting.
<b>Export Format</b>	This option is used for troubleshooting. Please only use this option if requested to do so by CAST Support.
<b>Internal ID Cache Folder Path</b>	<i>Not currently used</i>

<b>Multithreaded Export</b>	This can reduce the extraction duration by around 30% by extracting the various SQL objects simultaneously. Please only use this option if requested to do so by CAST Support.
<b>Type To Check</b>	<i>Not currently used</i>
<b>Verbose Configuration</b>	<i>Not currently used</i>
<b>Abort on Fatal Error</b>	By default this option is set to FALSE. Activating the option will cause the extraction process to stop when an error occurs. The Log panel will contain the reason for the abort and the obligatory types that caused the error.
<b>Configuration File Path Override</b>	By default this option is not defined. This option overrides the default .config file used in the Delivery process.
<b>Target Zip Packaging</b>	By default this option is set to FALSE. Activating this option will cause the delivery results to be output in raw file format AND in zip format. Please ensure that you correctly fill in the Target Folder Path field in the Target tab: make sure that you omit the .ZIP suffix.  The screen shot below will result in a .ZIP file called <b>delivery.zip</b> located in the <b>D:\Squirrel\delivery</b> folder AND a set of raw files in <b>D:\Squirrel\delivery\delivery</b> :
<b>Unicode Encoding</b>	<i>Not currently used</i>
<b>Platform Override</b>	<i>Not currently used</i>
<b>UAX Relative Paths</b>	By default this option is set to TRUE. This option will force the creation of relative paths (instead of absolute paths) in the resulting .UAX files (created during the delivery process) that point to the location of the source code (these are used in the AD Dashboard and in CAST Enlighten). This allows you to move the results of the delivery process and not lose the accompanying source code.  CAST recommends leaving this option <b>activated at all times</b> .
<b>UAX Code Information Generation</b>	<i>Not currently used</i>
<b>IDs Compression in UAX File</b>	<i>Not currently used</i>